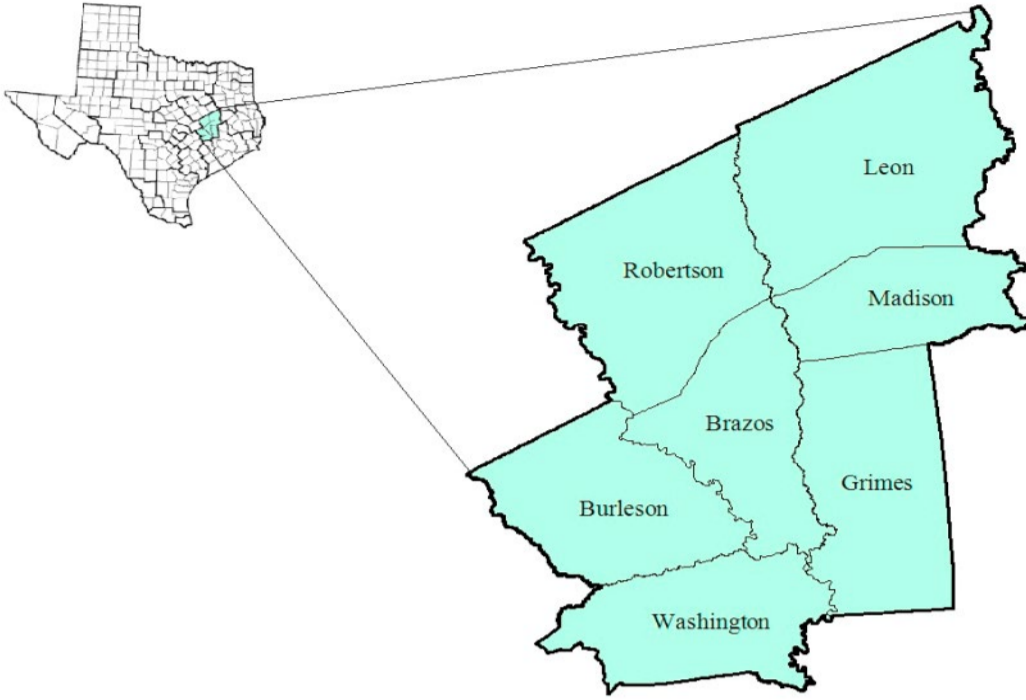


# Brazos Valley Workforce Development Area

## October 2018



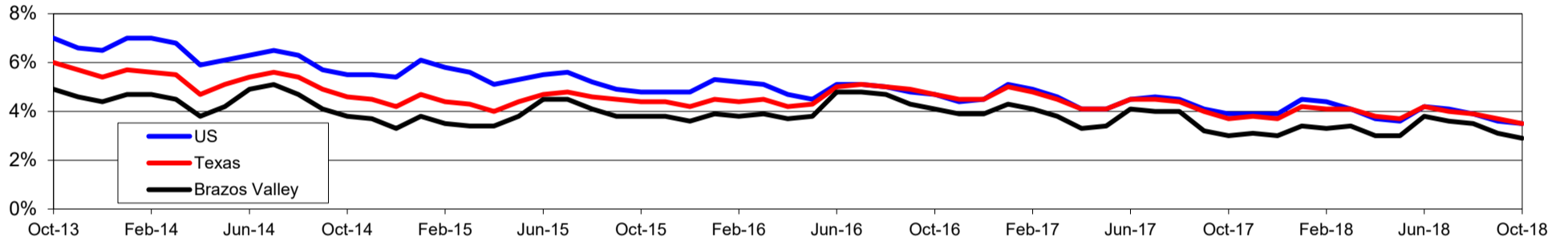
WDA Labor Force Statistics				
	Oct-18	Sep-18	Oct-17	OTY
CLF	171,888	169,962	169,392	2,496
Employed	166,947	164,663	164,348	2,599
Unemployed	4,941	5,299	5,044	-103
Rate	2.9%	3.1%	3.0%	-0.1%

Texas Labor Force Statistics				
	Oct-18	Sep-18	Oct-17	OTY
CLF	13,869,529	13,802,138	13,536,215	333,314
Employed	13,390,620	13,285,102	13,034,581	356,039
Unemployed	478,909	517,036	501,634	-22,725
Rate	3.5%	3.7%	3.7%	-0.2%

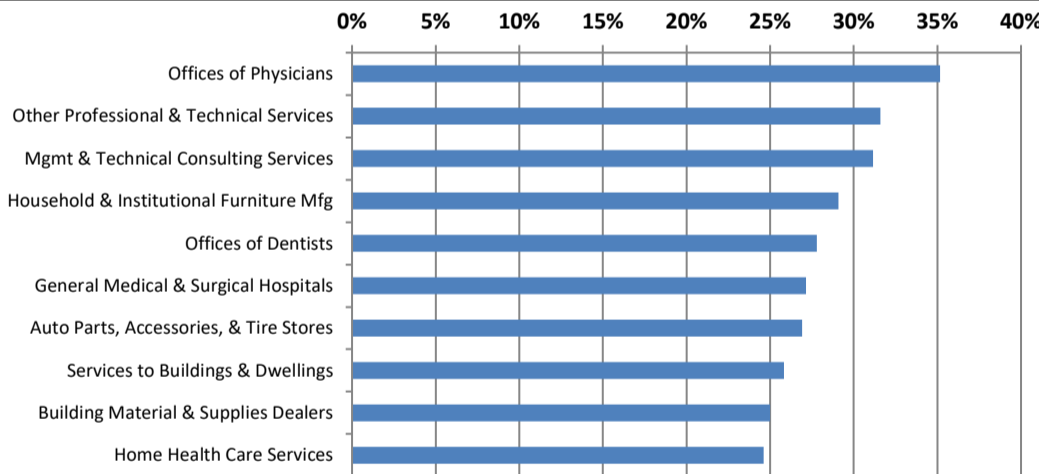
US Labor Force Statistics				
	Oct-18	Sep-18	Oct-17	OTY
CLF	162,723,000	161,958,000	160,465,000	2,258,000
Employed	156,952,000	156,191,000	154,223,000	2,729,000
Unemployed	5,771,000	5,766,000	6,242,000	-471,000
Rate	3.5%	3.6%	3.9%	-0.4%

Continued Claims for the Week of the 12th				
	Oct-18	Sep-18	Oct-17	OTY
WDA	444	480	622	-178
Texas	79,605	85,803	105,966	-26,361

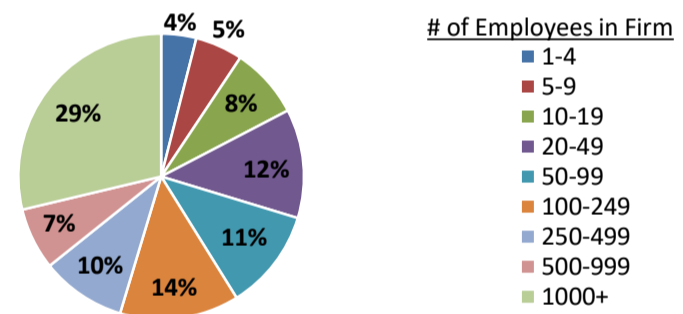
### Historical Unemployment Rates



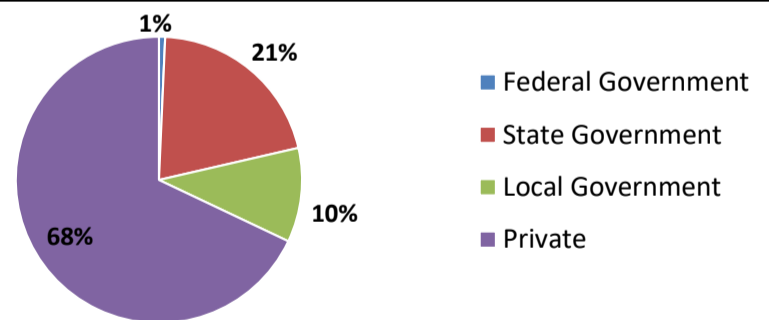
### Projected Fastest Growing Industries in WDA (% growth 2014-2024)



### Employment by Size Class (1st Quarter 2018)



### Employment by Ownership (1st Quarter 2018)



### Average Weekly Wage (1st Quarter 2018)

	Q1 2018	Q4 2017	Q1 2017	Change	
				Quarter	Year
WDA	\$818	\$821	\$777	-\$3	\$41
Texas	\$1,167	\$1,109	\$1,124	\$58	\$42
US	\$1,152	\$1,109	\$1,111	\$43	\$41

### Employment by Industry (1st Quarter 2018, Percent Change)

Industry	Employment	% of total	% Change	
			Quarter	Year
Natural resources and mining	4,867	3.4%	1.9%	4.8%
Construction	8,200	5.7%	-1.0%	0.7%
Manufacturing	10,488	7.3%	0.1%	7.7%
Trade, transportation and utilities	23,399	16.3%	-2.9%	0.8%
Information	1,429	1.0%	-3.8%	-4.5%
Financial activities	5,387	3.8%	1.5%	5.5%
Professional and business services	10,330	7.2%	-5.3%	5.8%
Education and health services	50,707	35.4%	0.6%	1.2%
Leisure and hospitality	18,528	12.9%	-4.9%	6.0%
Other services	2,946	2.1%	-4.3%	-3.2%
Public administration	7,064	4.9%	-0.4%	-0.3%
<b>Total</b>	<b>143,345</b>	<b>100.0%</b>	<b>-1.4%</b>	<b>2.5%</b>

### Employment by Industry (1st Quarter 2018)

