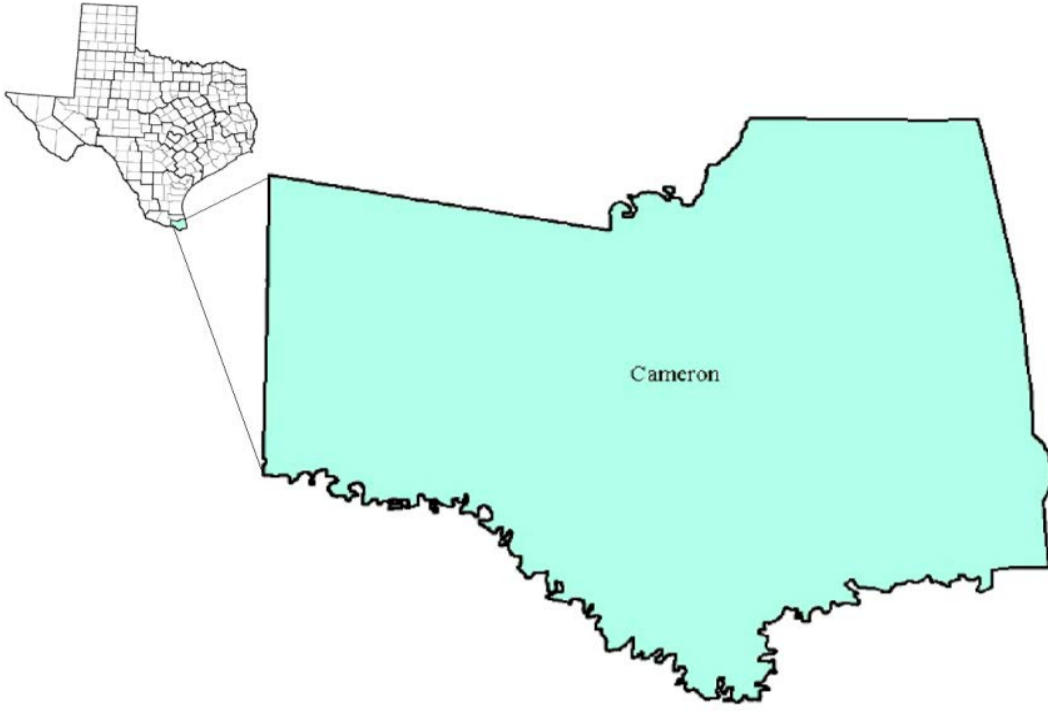


Cameron County Workforce Development Area

May 2018



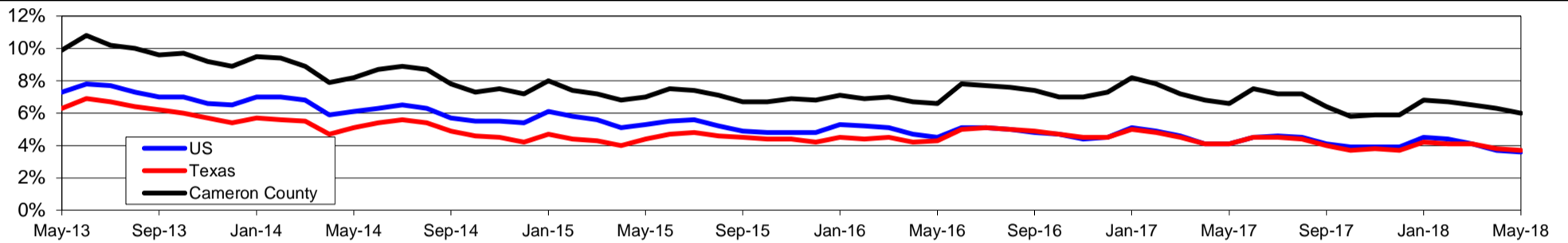
WDA Labor Force Statistics				
	May-18	Apr-18	May-17	OTY
CLF	167,401	168,100	166,389	1,012
Employed	157,350	157,588	155,466	1,884
Unemployed	10,051	10,512	10,923	-872
Rate	6.0%	6.3%	6.6%	-0.6%

Texas Labor Force Statistics				
	May-18	Apr-18	May-17	OTY
CLF	13,836,477	13,863,075	13,498,726	337,751
Employed	13,321,229	13,342,454	12,940,819	380,410
Unemployed	515,248	520,621	557,907	-42,659
Rate	3.7%	3.8%	4.1%	-0.4%

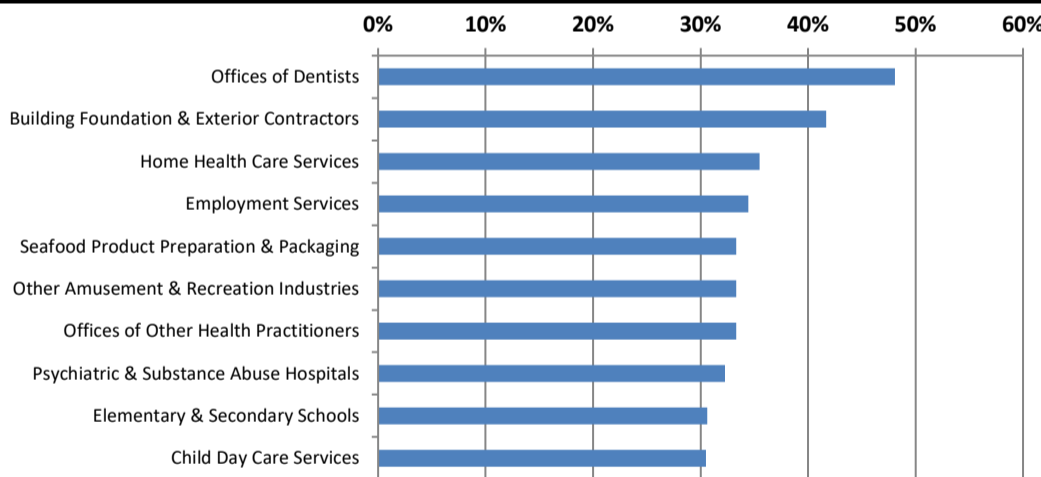
US Labor Force Statistics				
	May-18	Apr-18	May-17	OTY
CLF	161,765,000	161,280,000	159,979,000	1,786,000
Employed	156,009,000	155,348,000	153,407,000	2,602,000
Unemployed	5,756,000	5,932,000	6,572,000	-816,000
Rate	3.6%	3.7%	4.1%	-0.5%

Continued Claims for the Week of the 12th				
	May-18	Apr-18	May-17	OTY
WDA	2,202	2,434	2,542	-340
Texas	93,184	96,035	113,603	-20,419

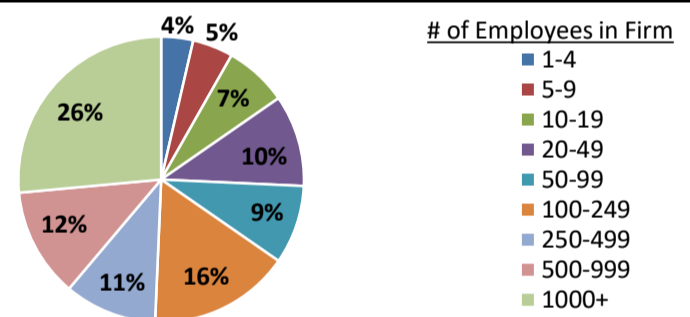
Historical Unemployment Rates



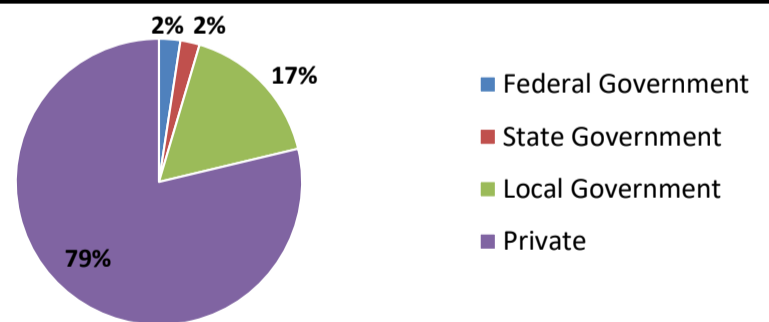
Projected Fastest Growing Industries in WDA (% growth 2014-2024)



Employment by Size Class (4th Quarter 2017)



Employment by Ownership (4th Quarter 2017)



Average Weekly Wage (4th Quarter 2017)

	Q4 2017	Q3 2017	Q4 2016	Change	
				Quarter	Year
WDA	\$652	\$613	\$639	\$40	\$13
Texas	\$1,109	\$1,032	\$1,072	\$77	\$37
US	\$1,065	\$1,020	\$1,067	\$45	-\$2

Employment by Industry (4th Quarter 2017, Percent Change)

Industry	Employment	% of total	% Change	
			Quarter	Year
Natural resources and mining	656	0.5%	-14.1%	-5.1%
Construction	3,127	2.2%	-1.5%	-7.8%
Manufacturing	5,234	3.7%	-0.6%	0.5%
Trade, transportation and utilities	27,162	19.4%	1.4%	-3.5%
Information	1,006	0.7%	0.6%	-7.3%
Financial activities	4,961	3.6%	-1.5%	0.0%
Professional and business services	12,321	8.8%	8.4%	6.0%
Education and health services	60,633	43.4%	2.6%	0.9%
Leisure and hospitality	15,267	10.9%	-7.6%	2.7%
Other services	2,133	1.5%	-3.2%	-8.7%
Public administration	7,177	5.1%	2.3%	-3.5%
Total	139,677	100.0%	1.0%	-0.1%

Employment by Industry (4th Quarter 2017)

