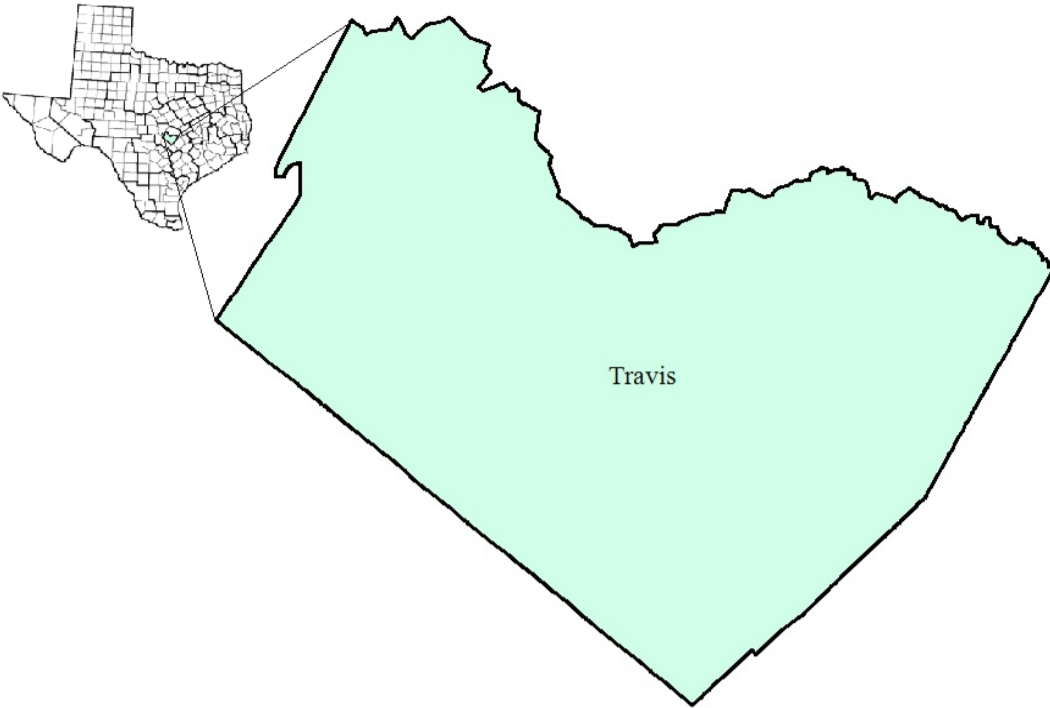


Capital Area Workforce Development Area

October 2018



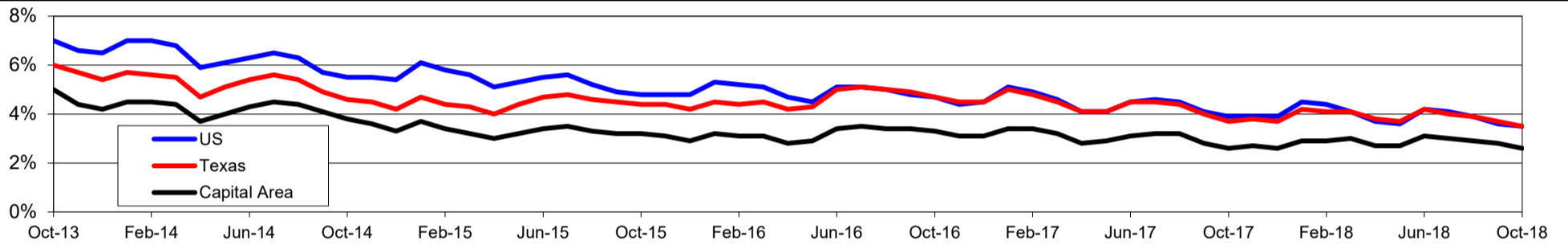
WDA Labor Force Statistics				
	Oct-18	Sep-18	Oct-17	OTY
CLF	726,231	723,468	700,225	26,006
Employed	707,314	703,135	681,727	25,587
Unemployed	18,917	20,333	18,498	419
Rate	2.6%	2.8%	2.6%	0.0%

Texas Labor Force Statistics				
	Oct-18	Sep-18	Oct-17	OTY
CLF	13,869,529	13,802,138	13,536,215	333,314
Employed	13,390,620	13,285,102	13,034,581	356,039
Unemployed	478,909	517,036	501,634	-22,725
Rate	3.5%	3.7%	3.7%	-0.2%

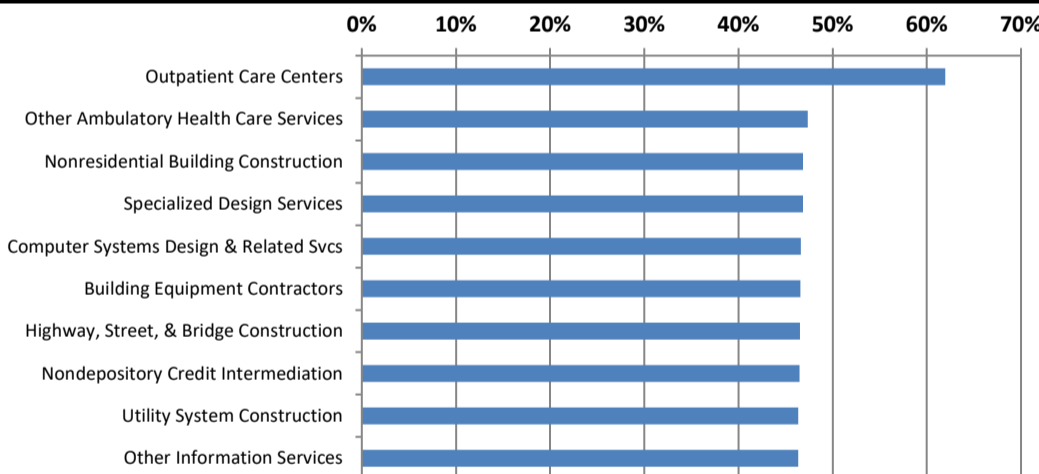
US Labor Force Statistics				
	Oct-18	Sep-18	Oct-17	OTY
CLF	162,723,000	161,958,000	160,465,000	2,258,000
Employed	156,952,000	156,191,000	154,223,000	2,729,000
Unemployed	5,771,000	5,766,000	6,242,000	-471,000
Rate	3.5%	3.6%	3.9%	-0.4%

Continued Claims for the Week of the 12th				
	Oct-18	Sep-18	Oct-17	OTY
WDA	3,149	3,321	3,530	-381
Texas	79,605	85,803	105,966	-26,361

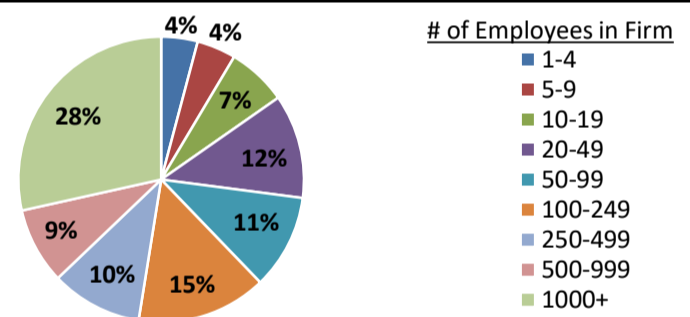
Historical Unemployment Rates



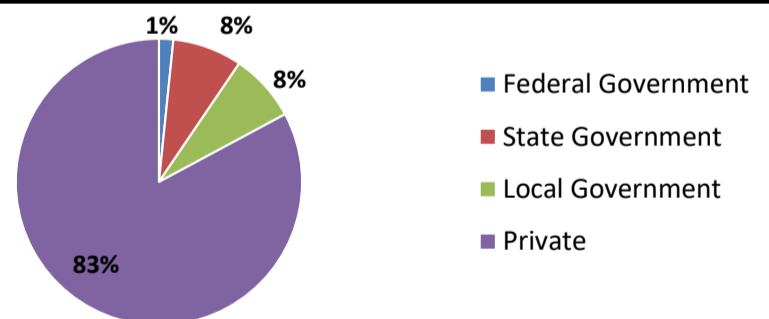
Projected Fastest Growing Industries in WDA (% growth 2014-2024)



Employment by Size Class (1st Quarter 2018)



Employment by Ownership (1st Quarter 2018)



Average Weekly Wage (1st Quarter 2018)

	Q1 2018	Q4 2017	Q1 2017	Change	
				Quarter	Year
WDA	\$1,307	\$1,277	\$1,251	\$30	\$56
Texas	\$1,167	\$1,109	\$1,124	\$58	\$42
US	\$1,152	\$1,109	\$1,111	\$43	\$41

Employment by Industry (1st Quarter 2018, Percent Change)

Industry	Employment	% of total	% Change	
			Quarter	Year
Natural resources and mining	2,511	0.3%	-0.2%	11.0%
Construction	42,324	5.8%	0.9%	4.5%
Manufacturing	39,388	5.4%	0.2%	4.9%
Trade, transportation and utilities	114,494	15.6%	-4.1%	-0.1%
Information	27,586	3.8%	-0.8%	6.5%
Financial activities	48,632	6.6%	-0.5%	3.8%
Professional and business services	144,222	19.7%	1.1%	5.9%
Education and health services	143,106	19.5%	-0.1%	1.4%
Leisure and hospitality	93,261	12.7%	-0.5%	2.7%
Other services	25,655	3.5%	-1.9%	0.0%
Public administration	51,662	7.0%	2.5%	-0.6%
Total	732,841	100.0%	-0.5%	2.7%

Employment by Industry (1st Quarter 2018)

