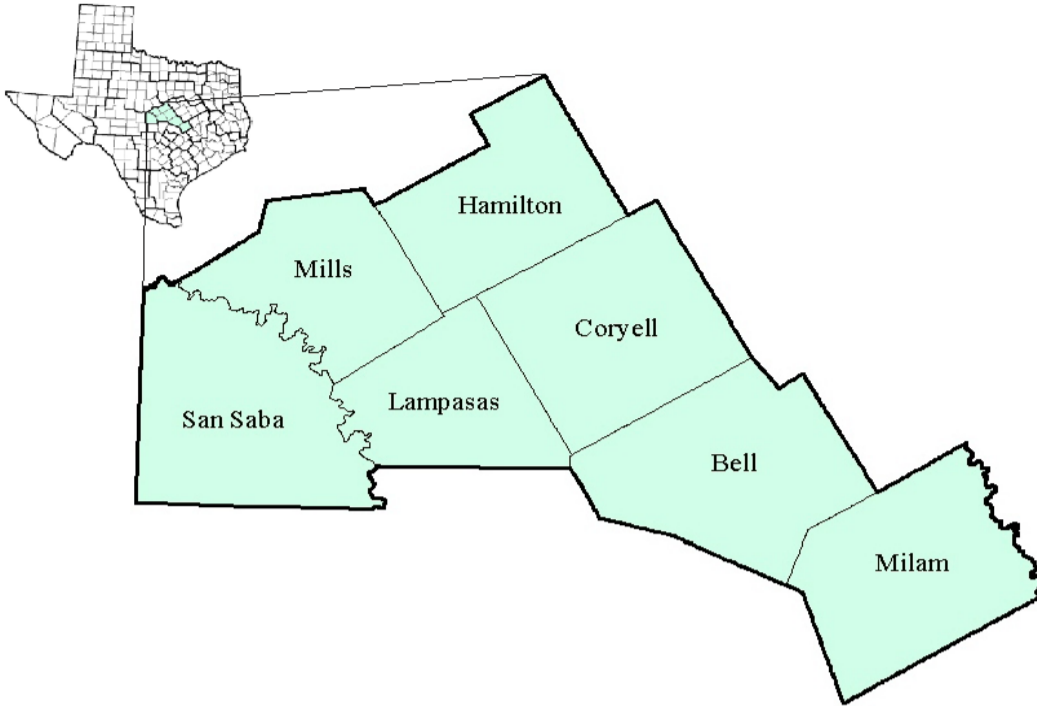


# Central Texas Workforce Development Area

July 2018



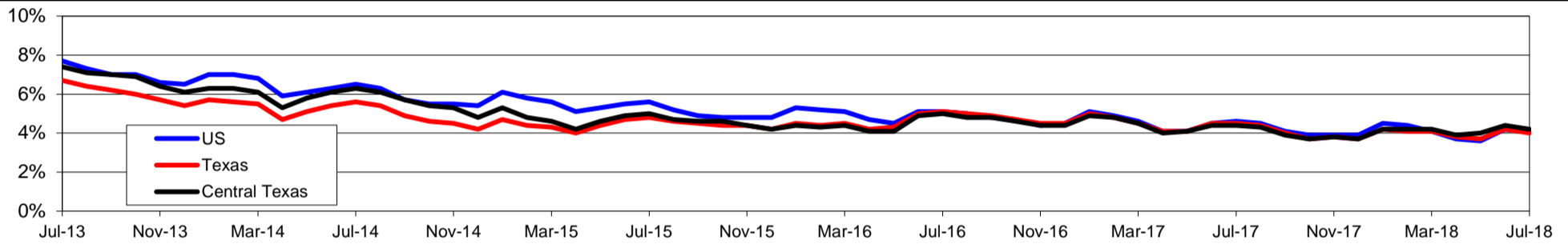
WDA Labor Force Statistics				
	Jul-18	Jun-18	Jul-17	OTY
CLF	195,948	196,450	193,333	2,615
Employed	187,650	187,715	184,851	2,799
Unemployed	8,298	8,735	8,482	-184
Rate	4.2%	4.4%	4.4%	-0.2%

Texas Labor Force Statistics				
	Jul-18	Jun-18	Jul-17	OTY
CLF	13,840,527	13,844,974	13,571,881	268,646
Employed	13,283,897	13,262,013	12,967,640	316,257
Unemployed	556,630	582,961	604,241	-47,611
Rate	4.0%	4.2%	4.5%	-0.5%

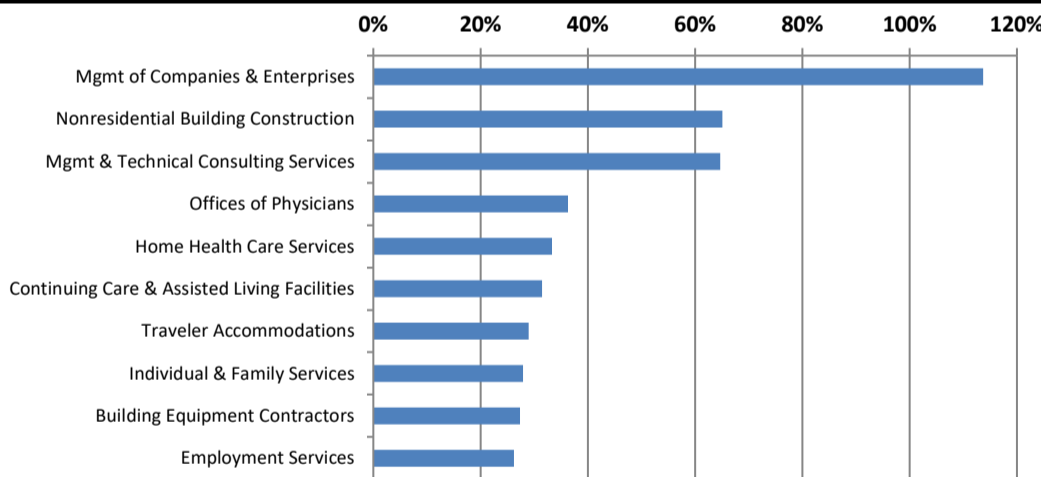
US Labor Force Statistics				
	Jul-18	Jun-18	Jul-17	OTY
CLF	163,734,000	163,277,000	161,911,000	1,823,000
Employed	157,004,000	156,465,000	154,470,000	2,534,000
Unemployed	6,730,000	6,812,000	7,441,000	-711,000
Rate	4.1%	4.2%	4.6%	-0.5%

Continued Claims for the Week of the 12th				
	Jul-18	Jun-18	Jul-17	OTY
WDA	1,409	1,410	1,376	33
Texas	102,645	101,223	124,432	-21,787

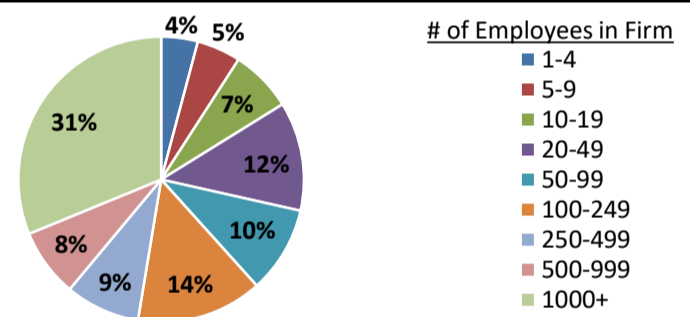
## Historical Unemployment Rates



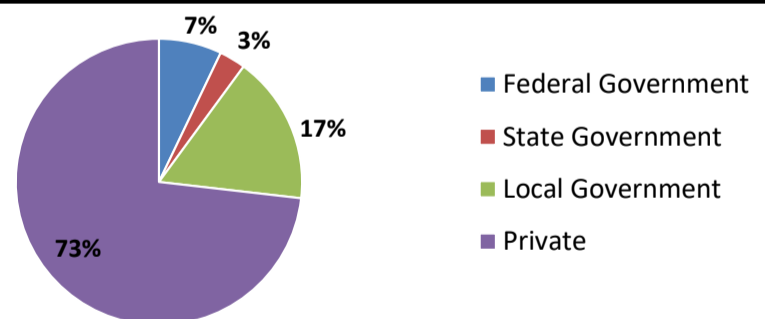
## Projected Fastest Growing Industries in WDA (% growth 2014-2024)



## Employment by Size Class (4th Quarter 2017)



## Employment by Ownership (4th Quarter 2017)



## Average Weekly Wage (4th Quarter 2017)

	Q4 2017	Q3 2017	Q4 2016	Change	
				Quarter	Year
WDA	\$897	\$835	\$854	\$62	\$43
Texas	\$1,109	\$1,032	\$1,072	\$77	\$37
US	\$1,109	\$1,020	\$1,067	\$89	\$42

## Employment by Industry (4th Quarter 2017, Percent Change)

Industry	Employment	% of total	% Change	
			Quarter	Year
Natural resources and mining	1,250	0.8%	1.5%	-2.6%
Construction	7,683	5.0%	0.2%	0.3%
Manufacturing	8,070	5.3%	0.0%	0.5%
Trade, transportation and utilities	32,313	21.2%	1.5%	2.8%
Information	1,349	0.9%	-0.8%	-5.2%
Financial activities	7,741	5.1%	5.4%	3.5%
Professional and business services	11,145	7.3%	2.6%	4.1%
Education and health services	51,547	33.8%	3.5%	0.2%
Leisure and hospitality	16,479	10.8%	-2.6%	5.1%
Other services	4,236	2.8%	-2.1%	-4.6%
Public administration	10,513	6.9%	-1.4%	-3.8%
<b>Total</b>	<b>152,326</b>	<b>100.0%</b>	<b>1.5%</b>	<b>1.2%</b>

## Employment by Industry (4th Quarter 2017)

