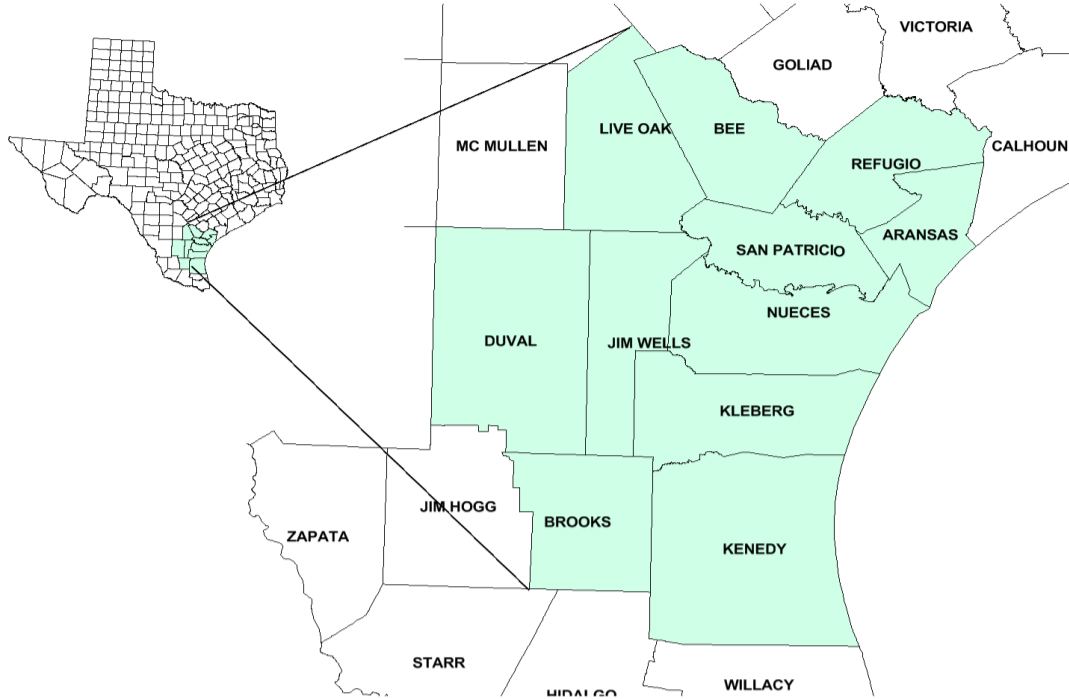


# Coastal Bend Workforce Development Area

## October 2018



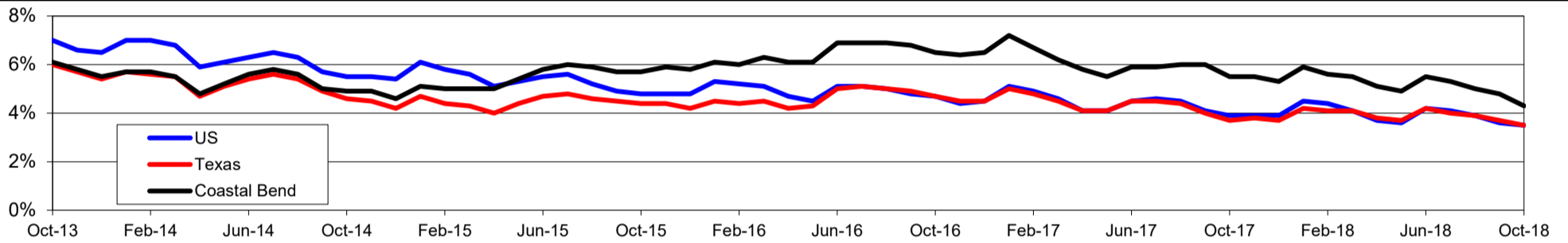
WDA Labor Force Statistics				
	Oct-18	Sep-18	Oct-17	OTY
CLF	263,400	261,032	261,157	2,243
Employed	252,033	248,408	246,773	5,260
Unemployed	11,367	12,624	14,384	-3,017
Rate	4.3%	4.8%	5.5%	-1.2%

Texas Labor Force Statistics				
	Oct-18	Sep-18	Oct-17	OTY
CLF	13,869,529	13,802,138	13,536,215	333,314
Employed	13,390,620	13,285,102	13,034,581	356,039
Unemployed	478,909	517,036	501,634	-22,725
Rate	3.5%	3.7%	3.7%	-0.2%

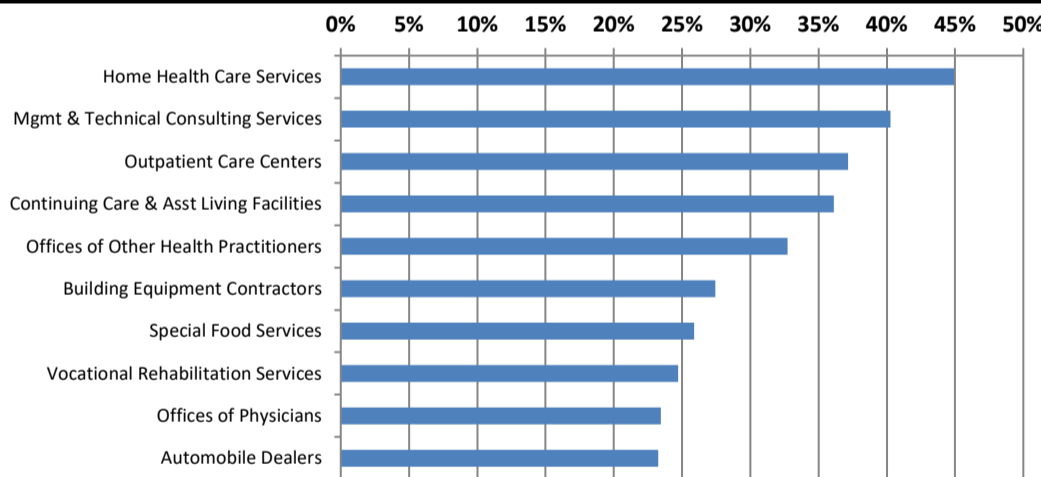
US Labor Force Statistics				
	Oct-18	Sep-18	Oct-17	OTY
CLF	162,723,000	161,958,000	160,465,000	2,258,000
Employed	156,952,000	156,191,000	154,223,000	2,729,000
Unemployed	5,771,000	5,766,000	6,242,000	-471,000
Rate	3.5%	3.6%	3.9%	-0.4%

Continued Claims for the Week of the 12th				
	Oct-18	Sep-18	Oct-17	OTY
WDA	1,786	2,096	3,914	-2,128
Texas	79,605	85,803	105,966	-26,361

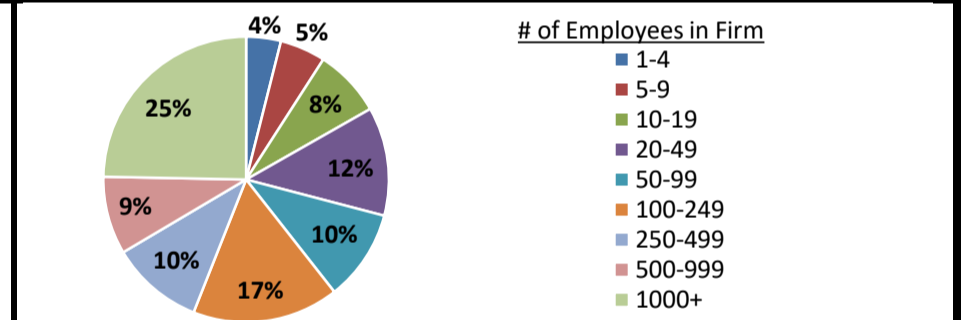
### Historical Unemployment Rates



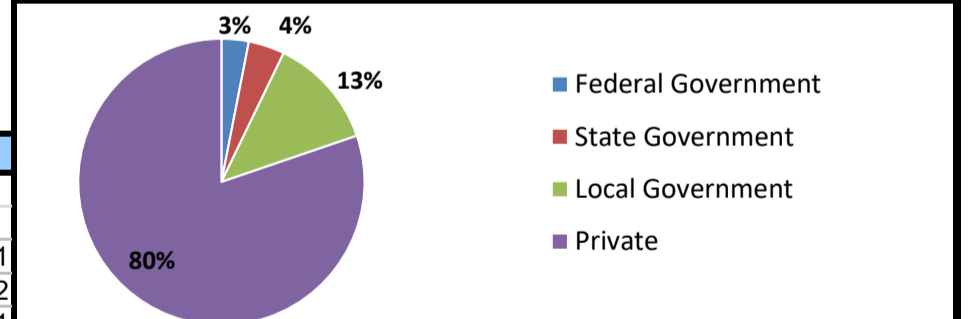
### Projected Fastest Growing Industries in WDA (% growth 2014-2024)



### Employment by Size Class (1st Quarter 2018)



### Employment by Ownership (1st Quarter 2018)



### Average Weekly Wage (1st Quarter 2018)

	Q1 2018	Q4 2017	Q1 2017	Change	
				Quarter	Year
WDA	\$900	\$908	\$879	-\$7	\$21
Texas	\$1,167	\$1,109	\$1,124	\$58	\$42
US	\$1,152	\$1,109	\$1,111	\$43	\$41

### Employment by Industry (1st Quarter 2018, Percent Change)

Industry	Employment	% of total	% Change	
			Quarter	Year
Natural resources and mining	10,499	4.5%	-4.6%	7.2%
Construction	24,452	10.4%	-1.7%	-0.9%
Manufacturing	12,332	5.2%	0.0%	-1.5%
Trade, transportation and utilities	42,589	18.1%	-2.4%	-0.5%
Information	1,976	0.8%	-5.6%	-7.6%
Financial activities	9,672	4.1%	2.4%	4.5%
Professional and business services	20,097	8.5%	3.1%	9.2%
Education and health services	66,040	28.1%	1.0%	-1.0%
Leisure and hospitality	30,126	12.8%	0.6%	-1.8%
Other services	5,749	2.4%	-0.1%	-4.3%
Public administration	11,819	5.0%	-0.7%	-1.6%
<b>Total</b>	<b>235,351</b>	<b>100.0%</b>	<b>-0.2%</b>	<b>0.2%</b>

### Employment by Industry (1st Quarter 2018)

