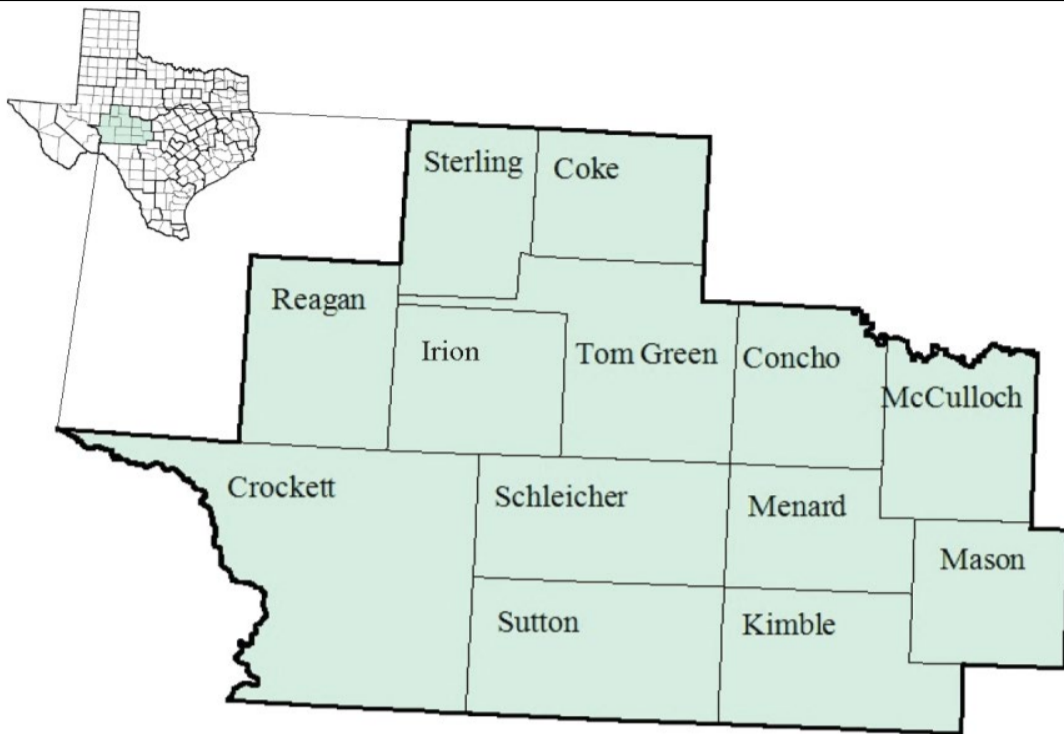


# Concho Valley Workforce Development Area

## October 2018



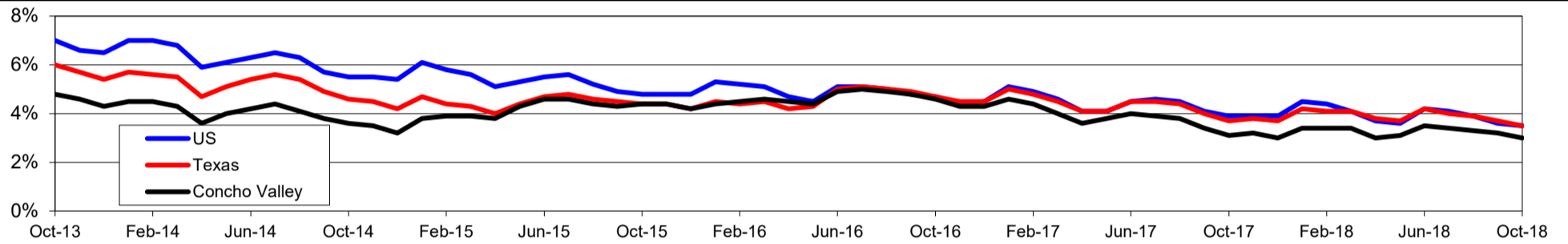
WDA Labor Force Statistics				
	Oct-18	Sep-18	Oct-17	OTY
CLF	72,915	72,823	72,198	717
Employed	70,707	70,477	69,960	747
Unemployed	2,208	2,346	2,238	-30
Rate	3.0%	3.2%	3.1%	-0.1%

Texas Labor Force Statistics				
	Oct-18	Sep-18	Oct-17	OTY
CLF	13,869,529	13,802,138	13,536,215	333,314
Employed	13,390,620	13,285,102	13,034,581	356,039
Unemployed	478,909	517,036	501,634	-22,725
Rate	3.5%	3.7%	3.7%	-0.2%

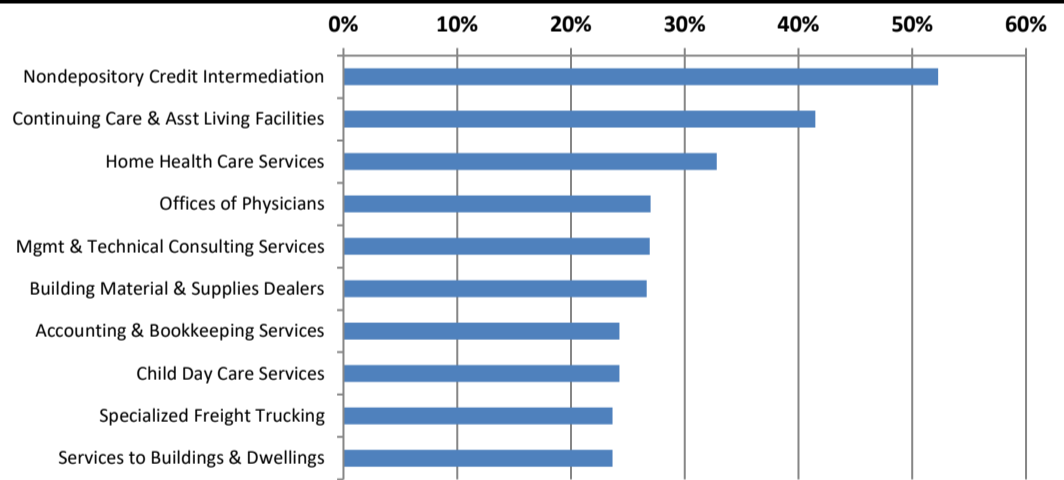
US Labor Force Statistics				
	Oct-18	Sep-18	Oct-17	OTY
CLF	162,723,000	161,958,000	160,465,000	2,258,000
Employed	156,952,000	156,191,000	154,223,000	2,729,000
Unemployed	5,771,000	5,766,000	6,242,000	-471,000
Rate	3.5%	3.6%	3.9%	-0.4%

Continued Claims for the Week of the 12th				
	Oct-18	Sep-18	Oct-17	OTY
WDA	245	264	291	-46
Texas	79,605	85,803	105,966	-26,361

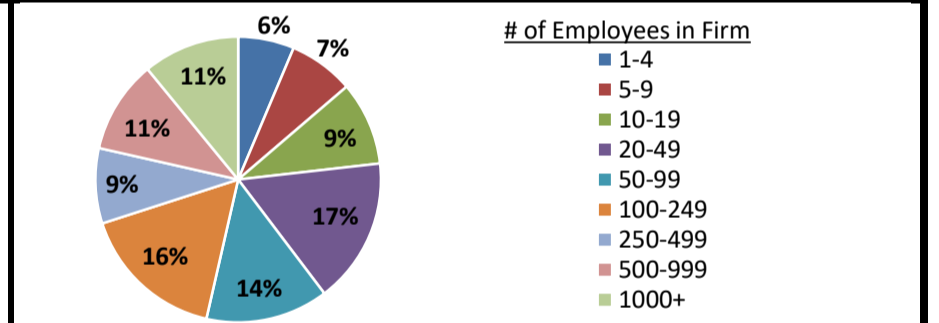
### Historical Unemployment Rates



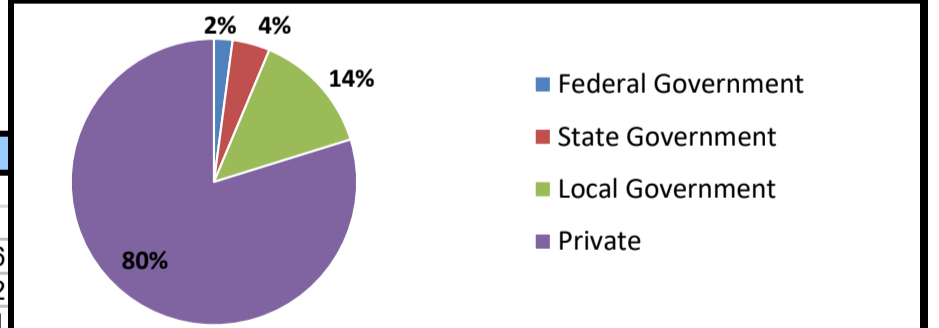
### Projected Fastest Growing Industries in WDA (% growth 2014-2024)



### Employment by Size Class (1st Quarter 2018)



### Employment by Ownership (1st Quarter 2018)



### Average Weekly Wage (1st Quarter 2018)

	Q1 2018	Q4 2017	Q1 2017	Change	
				Quarter	Year
WDA	\$842	\$850	\$796	-\$8	\$46
Texas	\$1,167	\$1,109	\$1,124	\$58	\$42
US	\$1,152	\$1,109	\$1,111	\$43	\$41

### Employment by Industry (1st Quarter 2018, Percent Change)

Industry	Employment	% of total	% Change	
			Quarter	Year
Natural resources and mining	4,164	6.7%	-0.5%	1.9%
Construction	3,337	5.4%	-1.7%	0.5%
Manufacturing	3,644	5.9%	0.1%	9.9%
Trade, transportation and utilities	12,938	21.0%	-1.9%	2.2%
Information	792	1.3%	-1.5%	-2.8%
Financial activities	3,226	5.2%	2.6%	6.2%
Professional and business services	4,149	6.7%	-0.2%	-5.4%
Education and health services	16,642	27.0%	0.0%	-0.2%
Leisure and hospitality	7,521	12.2%	-0.5%	-0.6%
Other services	1,724	2.8%	-1.1%	-2.9%
Public administration	3,613	5.9%	0.0%	1.8%
<b>Total</b>	<b>61,750</b>	<b>100.0%</b>	<b>-0.5%</b>	<b>0.9%</b>

### Employment by Industry (1st Quarter 2018)

