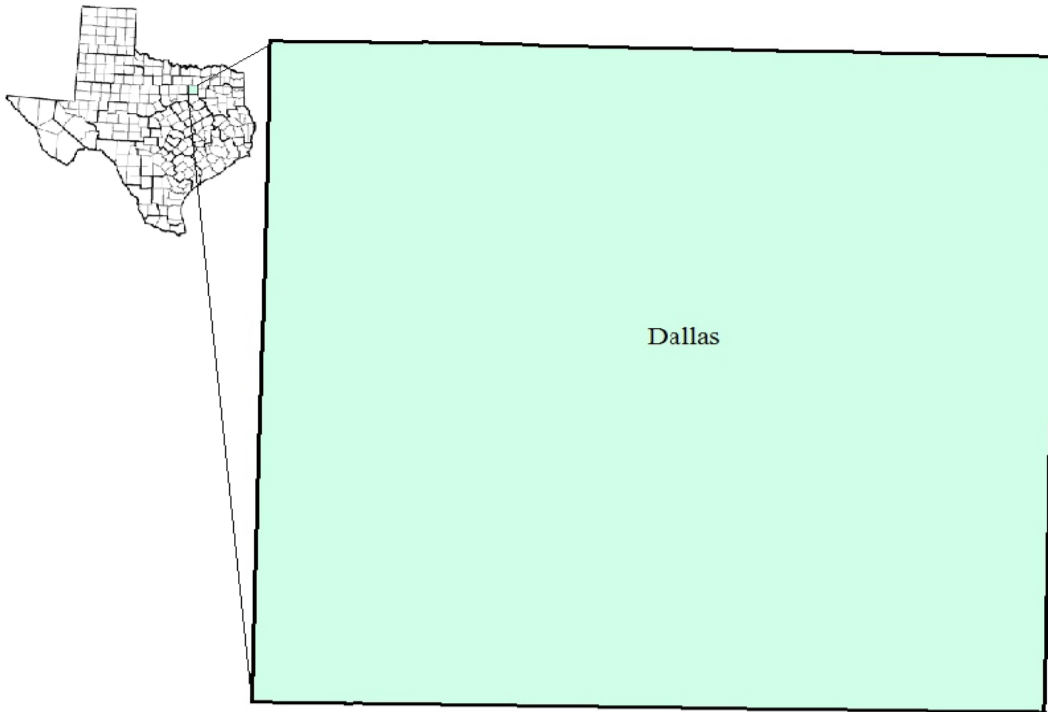


# Dallas County Workforce Development Area

## October 2018



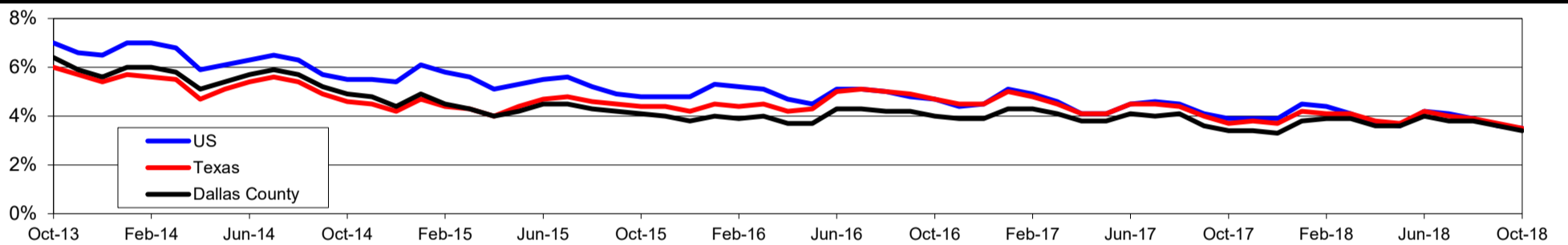
WDA Labor Force Statistics				
	Oct-18	Sep-18	Oct-17	OTY
CLF	1,383,958	1,373,649	1,340,573	43,385
Employed	1,337,461	1,324,089	1,295,436	42,025
Unemployed	46,497	49,560	45,137	1,360
Rate	3.4%	3.6%	3.4%	0.0%

Texas Labor Force Statistics				
	Oct-18	Sep-18	Oct-17	OTY
CLF	13,869,529	13,802,138	13,536,215	333,314
Employed	13,390,620	13,285,102	13,034,581	356,039
Unemployed	478,909	517,036	501,634	-22,725
Rate	3.5%	3.7%	3.7%	-0.2%

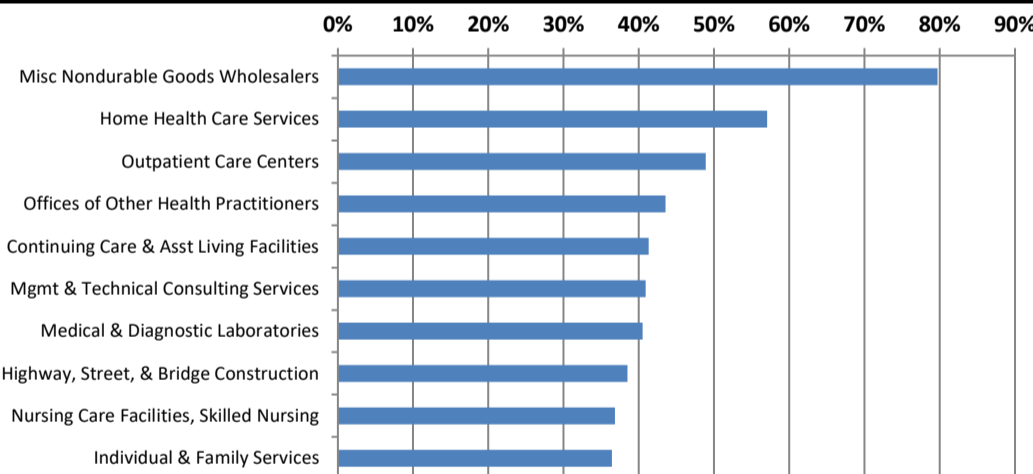
US Labor Force Statistics				
	Oct-18	Sep-18	Oct-17	OTY
CLF	162,723,000	161,958,000	160,465,000	2,258,000
Employed	156,952,000	156,191,000	154,223,000	2,729,000
Unemployed	5,771,000	5,766,000	6,242,000	-471,000
Rate	3.5%	3.6%	3.9%	-0.4%

Continued Claims for the Week of the 12th				
	Oct-18	Sep-18	Oct-17	OTY
WDA	8,832	9,155	9,854	-1,022
Texas	79,605	85,803	105,966	-26,361

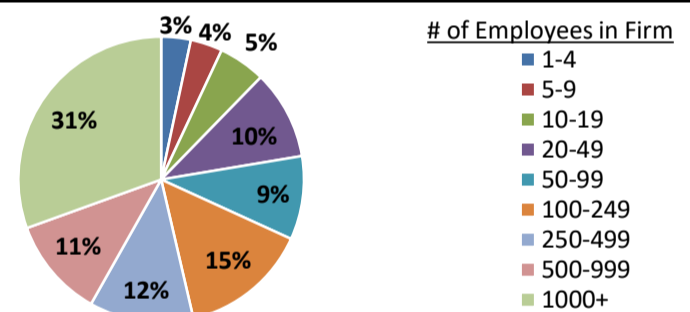
### Historical Unemployment Rates



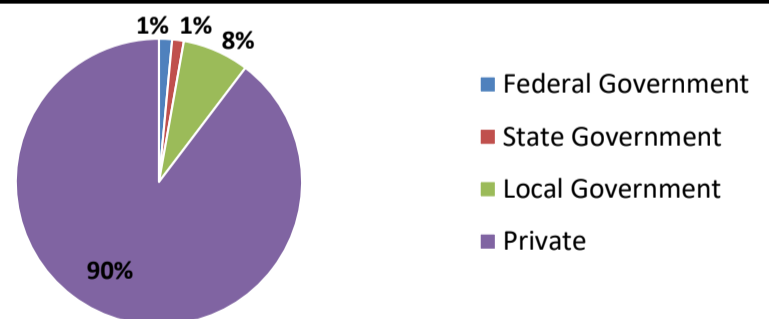
### Projected Fastest Growing Industries in WDA (% growth 2014-2024)



### Employment by Size Class (1st Quarter 2018)



### Employment by Ownership (1st Quarter 2018)



### Average Weekly Wage (1st Quarter 2018)

	Q1 2018	Q4 2017	Q1 2017	Change	
				Quarter	Year
WDA	\$1,425	\$1,318	\$1,376	\$107	\$49
Texas	\$1,167	\$1,109	\$1,124	\$58	\$42
US	\$1,152	\$1,109	\$1,111	\$43	\$41

### Employment by Industry (1st Quarter 2018, Percent Change)

Industry	Employment	% of total	% Change	
			Quarter	Year
Natural resources and mining	8,306	0.5%	-10.0%	4.7%
Construction	90,228	5.4%	-2.4%	1.1%
Manufacturing	111,619	6.6%	-0.7%	0.6%
Trade, transportation and utilities	364,624	21.7%	-4.1%	1.7%
Information	50,805	3.0%	3.6%	2.4%
Financial activities	164,442	9.8%	-1.4%	1.3%
Professional and business services	345,030	20.5%	-0.6%	1.8%
Education and health services	304,339	18.1%	-1.0%	0.6%
Leisure and hospitality	161,282	9.6%	-2.6%	0.8%
Other services	42,576	2.5%	-1.5%	0.5%
Public administration	37,932	2.3%	0.5%	0.9%
<b>Total</b>	<b>1,681,183</b>	<b>100.0%</b>	<b>-1.7%</b>	<b>1.3%</b>

### Employment by Industry (1st Quarter 2018)

