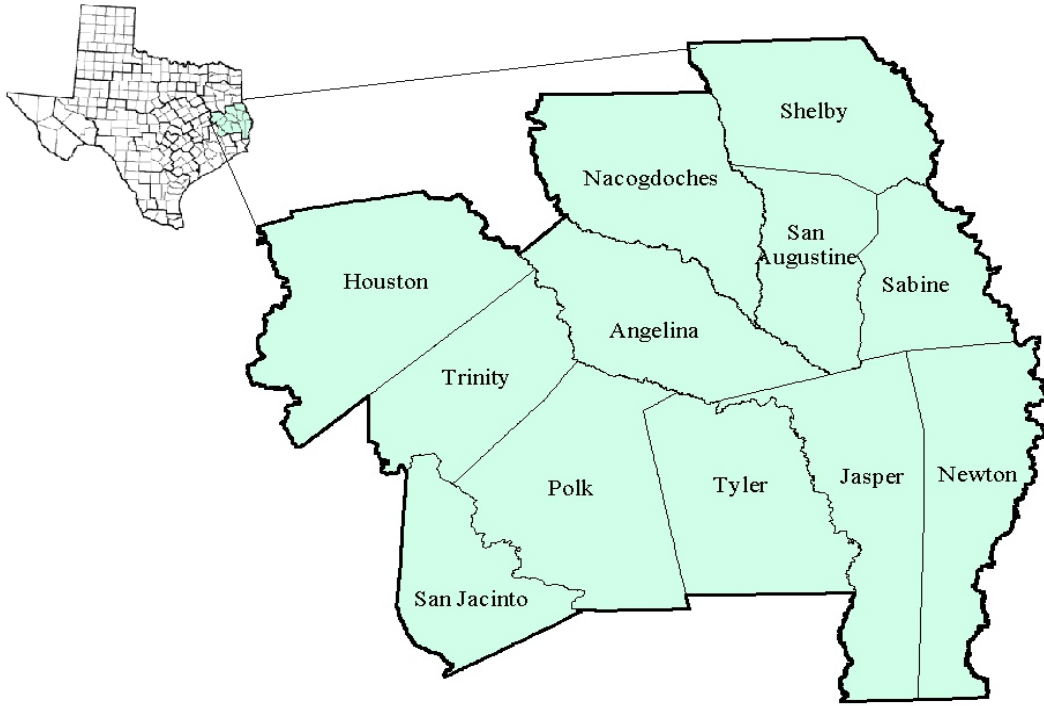


Deep East Texas Workforce Development Area

May 2018



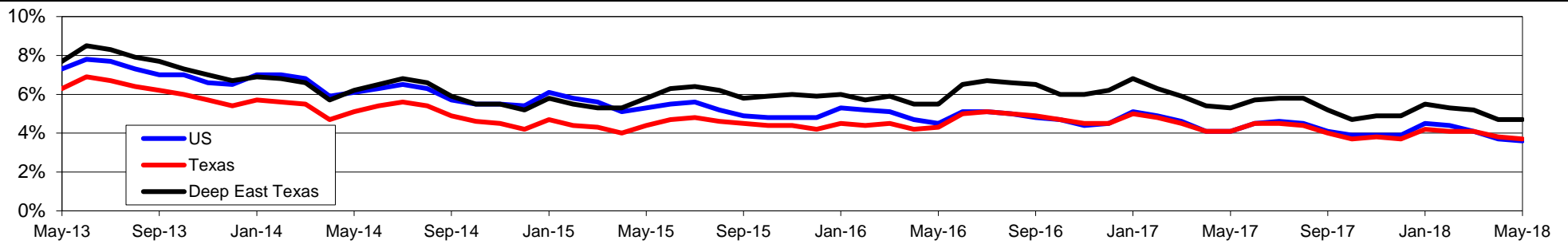
WDA Labor Force Statistics				
	May-18	Apr-18	May-17	OTY
CLF	153,599	153,857	153,385	214
Employed	146,401	146,571	145,253	1,148
Unemployed	7,198	7,286	8,132	-934
Rate	4.7%	4.7%	5.3%	-0.6%

Texas Labor Force Statistics				
	May-18	Apr-18	May-17	OTY
CLF	13,836,477	13,863,075	13,498,726	337,751
Employed	13,321,229	13,342,454	12,940,819	380,410
Unemployed	515,248	520,621	557,907	-42,659
Rate	3.7%	3.8%	4.1%	-0.4%

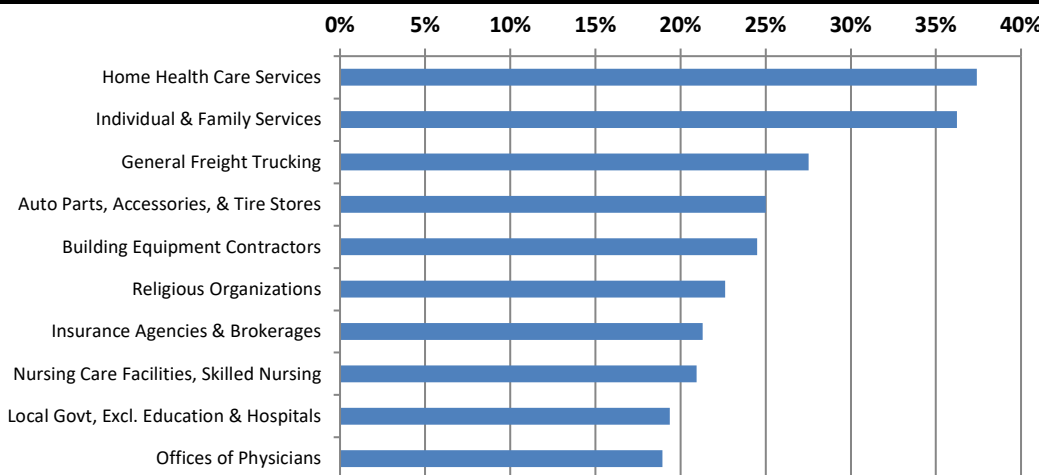
US Labor Force Statistics				
	May-18	Apr-18	May-17	OTY
CLF	161,765,000	161,280,000	159,979,000	1,786,000
Employed	156,009,000	155,348,000	153,407,000	2,602,000
Unemployed	5,756,000	5,932,000	6,572,000	-816,000
Rate	3.6%	3.7%	4.1%	-0.5%

Continued Claims for the Week of the 12th				
	May-18	Apr-18	May-17	OTY
WDA	1,187	1,204	1,572	-385
Texas	93,184	96,035	113,603	-20,419

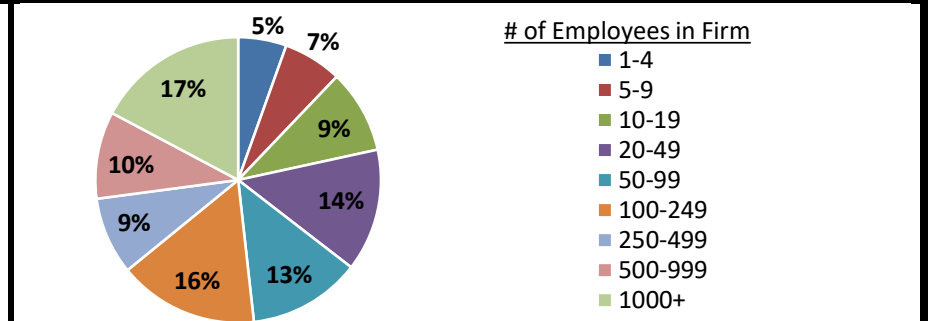
Historical Unemployment Rates



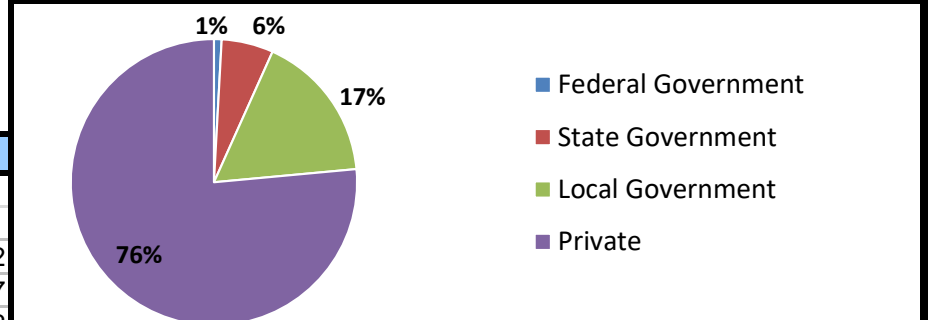
Projected Fastest Growing Industries in WDA (% growth 2014-2024)



Employment by Size Class (4th Quarter 2017)



Employment by Ownership (4th Quarter 2017)



Average Weekly Wage (4th Quarter 2017)

	Q4 2017	Q3 2017	Q4 2016	Change	
				Quarter	Year
WDA	\$775	\$729	\$753	\$47	\$22
Texas	\$1,109	\$1,032	\$1,072	\$77	\$37
US	\$1,065	\$1,020	\$1,067	\$45	-\$2

Employment by Industry (4th Quarter 2017, Percent Change)

Industry	Employment	% of total	% Change	
			Quarter	Year
Natural resources and mining	2,695	2.5%	3.8%	-6.7%
Construction	5,576	5.2%	1.7%	-2.3%
Manufacturing	11,834	11.0%	-0.3%	-1.8%
Trade, transportation and utilities	21,219	19.8%	0.1%	-1.4%
Information	793	0.7%	-4.7%	-5.7%
Financial activities	4,267	4.0%	-1.0%	2.7%
Professional and business services	7,267	6.8%	1.6%	-2.0%
Education and health services	34,162	31.8%	2.5%	-2.8%
Leisure and hospitality	10,828	10.1%	-0.9%	4.3%
Other services	2,363	2.2%	0.1%	1.2%
Public administration	6,336	5.9%	-1.4%	-3.0%
Total	107,340	100.0%	0.8%	-1.5%

Employment by Industry (4th Quarter 2017)

