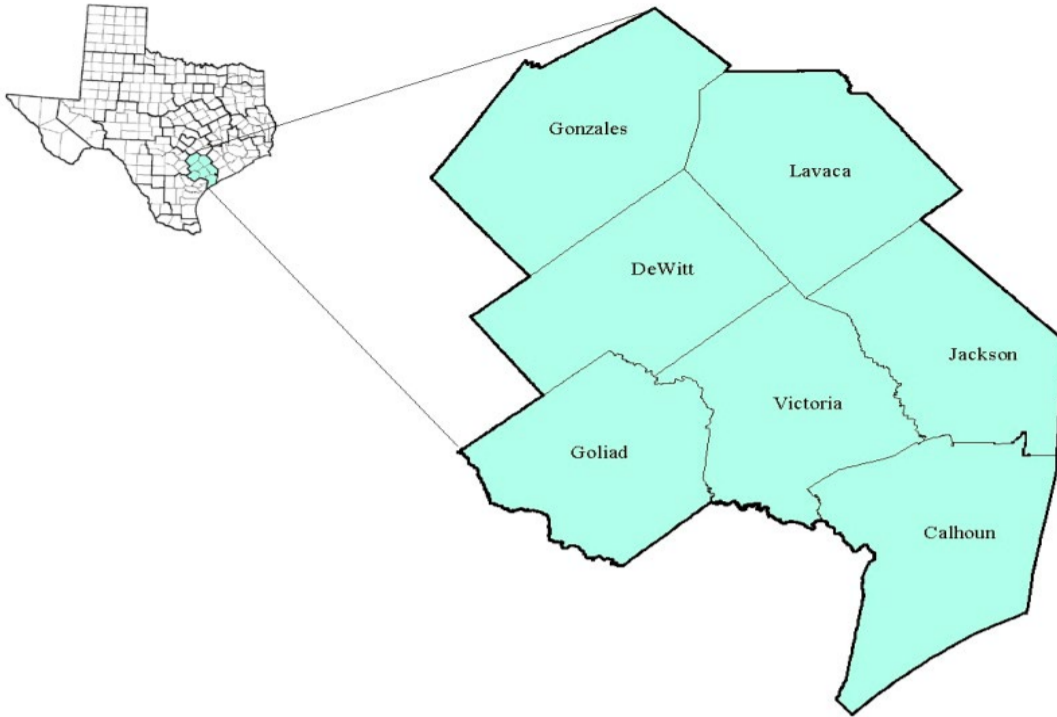


Golden Crescent Workforce Development Area

October 2018



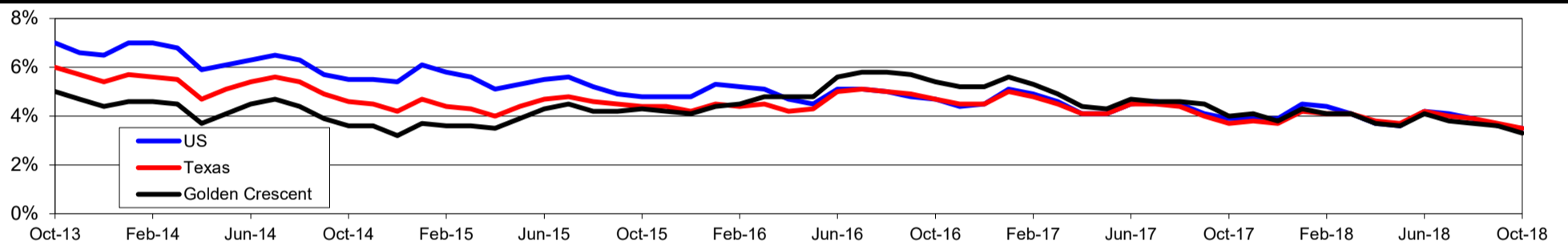
WDA Labor Force Statistics				
	Oct-18	Sep-18	Oct-17	OTY
CLF	90,657	90,436	90,923	-266
Employed	87,653	87,214	87,250	403
Unemployed	3,004	3,222	3,673	-669
Rate	3.3%	3.6%	4.0%	-0.7%

Texas Labor Force Statistics				
	Oct-18	Sep-18	Oct-17	OTY
CLF	13,869,529	13,802,138	13,536,215	333,314
Employed	13,390,620	13,285,102	13,034,581	356,039
Unemployed	478,909	517,036	501,634	-22,725
Rate	3.5%	3.7%	3.7%	-0.2%

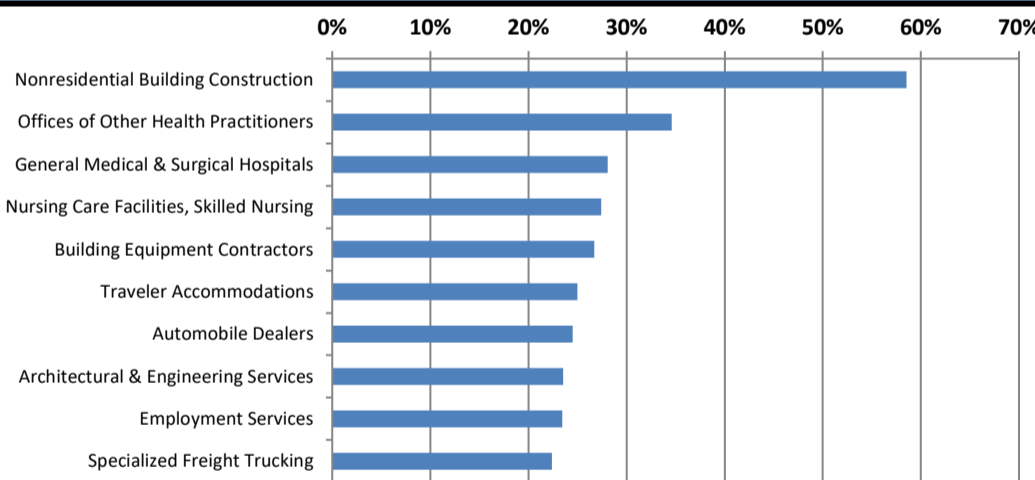
US Labor Force Statistics				
	Oct-18	Sep-18	Oct-17	OTY
CLF	162,723,000	161,958,000	160,465,000	2,258,000
Employed	156,952,000	156,191,000	154,223,000	2,729,000
Unemployed	5,771,000	5,766,000	6,242,000	-471,000
Rate	3.5%	3.6%	3.9%	-0.4%

Continued Claims for the Week of the 12th				
	Oct-18	Sep-18	Oct-17	OTY
WDA	365	375	801	-436
Texas	79,605	85,803	105,966	-26,361

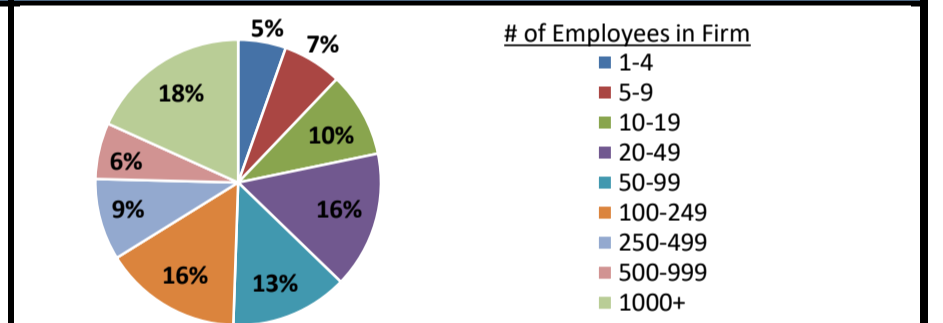
Historical Unemployment Rates



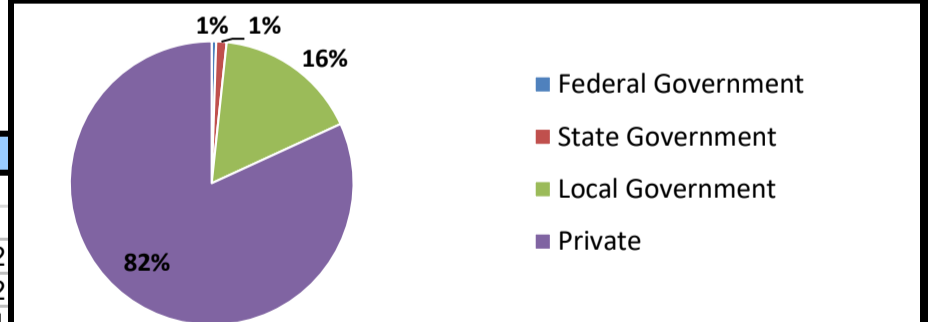
Projected Fastest Growing Industries in WDA (% growth 2014-2024)



Employment by Size Class (1st Quarter 2018)



Employment by Ownership (1st Quarter 2018)



Average Weekly Wage (1st Quarter 2018)

	Q1 2018	Q4 2017	Q1 2017	Change	
				Quarter	Year
WDA	\$907	\$939	\$885	-\$32	\$22
Texas	\$1,167	\$1,109	\$1,124	\$58	\$42
US	\$1,152	\$1,109	\$1,111	\$43	\$41

Employment by Industry (1st Quarter 2018, Percent Change)

Industry	Employment	% of total	% Change	
			Quarter	Year
Natural resources and mining	5,429	6.9%	4.2%	14.6%
Construction	7,831	10.0%	16.6%	20.5%
Manufacturing	9,438	12.0%	4.9%	1.2%
Trade, transportation and utilities	16,592	21.2%	0.0%	2.1%
Information	642	0.8%	-4.5%	-6.4%
Financial activities	2,993	3.8%	-10.1%	-6.9%
Professional and business services	4,856	6.2%	8.0%	10.1%
Education and health services	18,154	23.1%	-0.3%	-4.2%
Leisure and hospitality	7,253	9.2%	0.5%	2.8%
Other services	2,172	2.8%	10.1%	14.4%
Public administration	3,082	3.9%	-1.1%	-1.6%
Total	78,442	100.0%	2.5%	3.0%

Employment by Industry (1st Quarter 2018)

