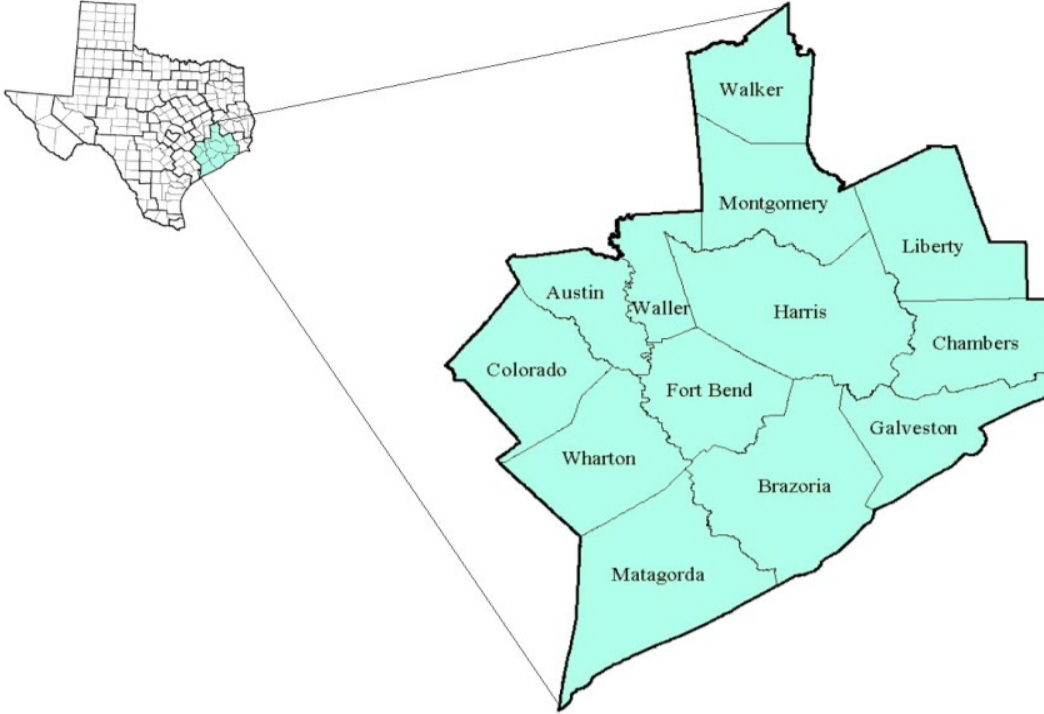


# Gulf Coast Workforce Development Area

## October 2018



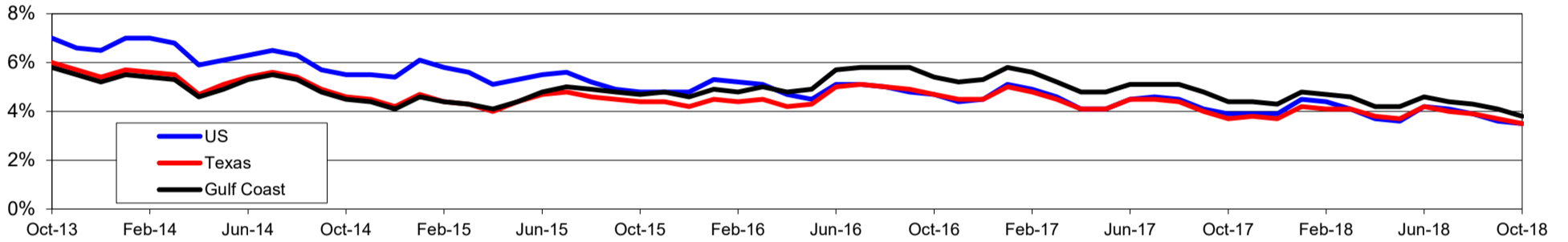
WDA Labor Force Statistics				
	Oct-18	Sep-18	Oct-17	OTY
CLF	3,492,842	3,476,706	3,388,816	104,026
Employed	3,361,264	3,332,858	3,240,875	120,389
Unemployed	131,578	143,848	147,941	-16,363
Rate	3.8%	4.1%	4.4%	-0.6%

Texas Labor Force Statistics				
	Oct-18	Sep-18	Oct-17	OTY
CLF	13,869,529	13,802,138	13,536,215	333,314
Employed	13,390,620	13,285,102	13,034,581	356,039
Unemployed	478,909	517,036	501,634	-22,725
Rate	3.5%	3.7%	3.7%	-0.2%

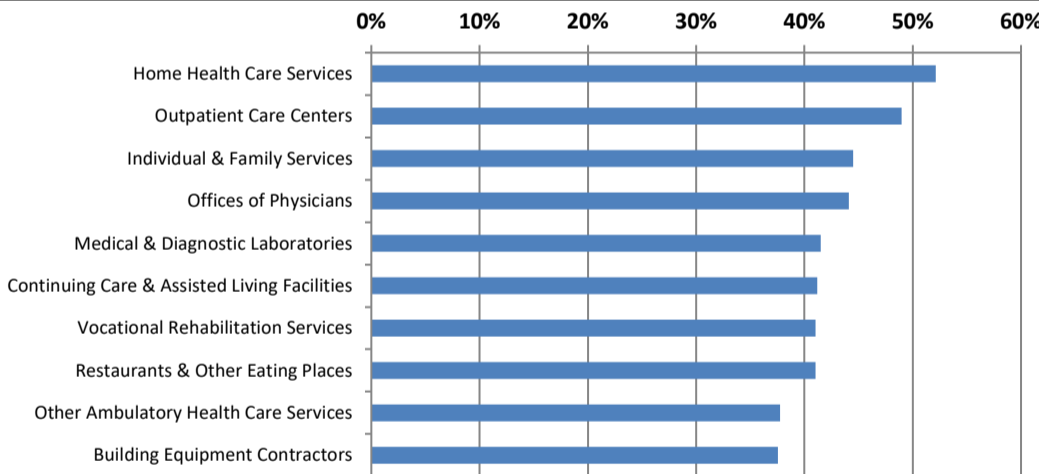
US Labor Force Statistics				
	Oct-18	Sep-18	Oct-17	OTY
CLF	162,723,000	161,958,000	160,465,000	2,258,000
Employed	156,952,000	156,191,000	154,223,000	2,729,000
Unemployed	5,771,000	5,766,000	6,242,000	-471,000
Rate	3.5%	3.6%	3.9%	-0.4%

Continued Claims for the Week of the 12th				
	Oct-18	Sep-18	Oct-17	OTY
WDA	23,177	25,887	35,684	-12,507
Texas	79,605	85,803	105,966	-26,361

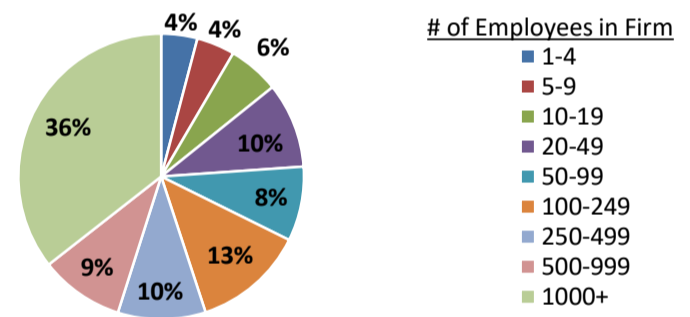
### Historical Unemployment Rates



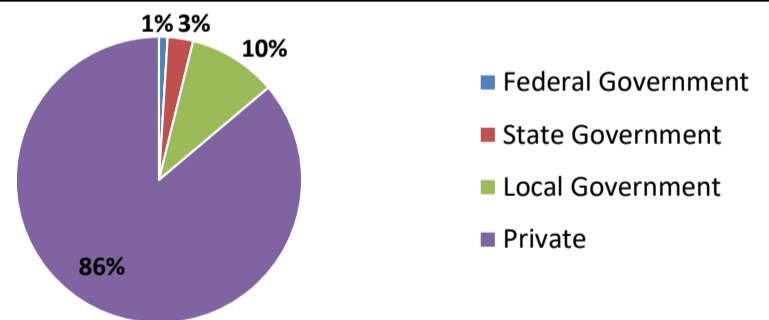
### Projected Fastest Growing Industries in WDA (% growth 2014-2024)



### Employment by Size Class (1st Quarter 2018)



### Employment by Ownership (1st Quarter 2018)



### Average Weekly Wage (1st Quarter 2018)

	Q1 2018	Q4 2017	Q1 2017	Change	
				Quarter	Year
WDA	\$1,394	\$1,273	\$1,345	\$120	\$49
Texas	\$1,167	\$1,109	\$1,124	\$58	\$42
US	\$1,152	\$1,109	\$1,111	\$43	\$41

### Employment by Industry (1st Quarter 2018, Percent Change)

Industry	Employment	% of total	% Change	
			Quarter	Year
Natural resources and mining	81,854	2.8%	-2.2%	0.9%
Construction	217,545	7.3%	-0.9%	2.7%
Manufacturing	226,270	7.6%	0.5%	2.3%
Trade, transportation and utilities	629,061	21.1%	-2.3%	1.3%
Information	32,551	1.1%	-0.2%	-1.9%
Financial activities	157,688	5.3%	0.1%	2.3%
Professional and business services	466,724	15.7%	-0.3%	2.9%
Education and health services	668,361	22.5%	-0.3%	1.4%
Leisure and hospitality	322,859	10.9%	0.6%	1.8%
Other services	87,510	2.9%	0.0%	2.1%
Public administration	84,563	2.8%	0.1%	0.2%
<b>Total</b>	<b>2,974,986</b>	<b>100.0%</b>	<b>-0.6%</b>	<b>1.8%</b>

### Employment by Industry (1st Quarter 2018)

