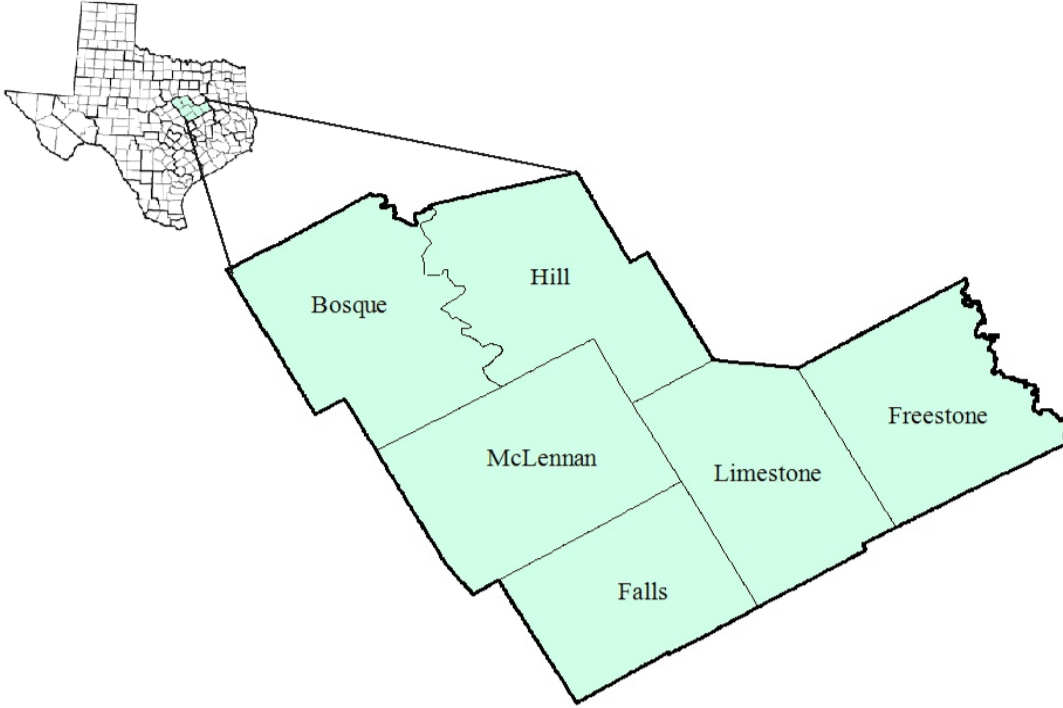


Heart of Texas Workforce Development Area

October 2018



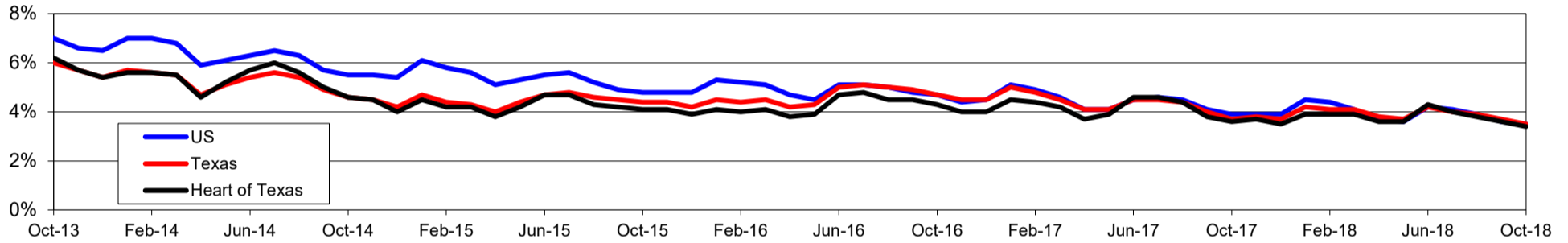
WDA Labor Force Statistics				
	Oct-18	Sep-18	Oct-17	OTY
CLF	164,760	165,029	162,962	1,798
Employed	159,179	159,072	157,162	2,017
Unemployed	5,581	5,957	5,800	-219
Rate	3.4%	3.6%	3.6%	-0.2%

Texas Labor Force Statistics				
	Oct-18	Sep-18	Oct-17	OTY
CLF	13,869,529	13,802,138	13,536,215	333,314
Employed	13,390,620	13,285,102	13,034,581	356,039
Unemployed	478,909	517,036	501,634	-22,725
Rate	3.5%	3.7%	3.7%	-0.2%

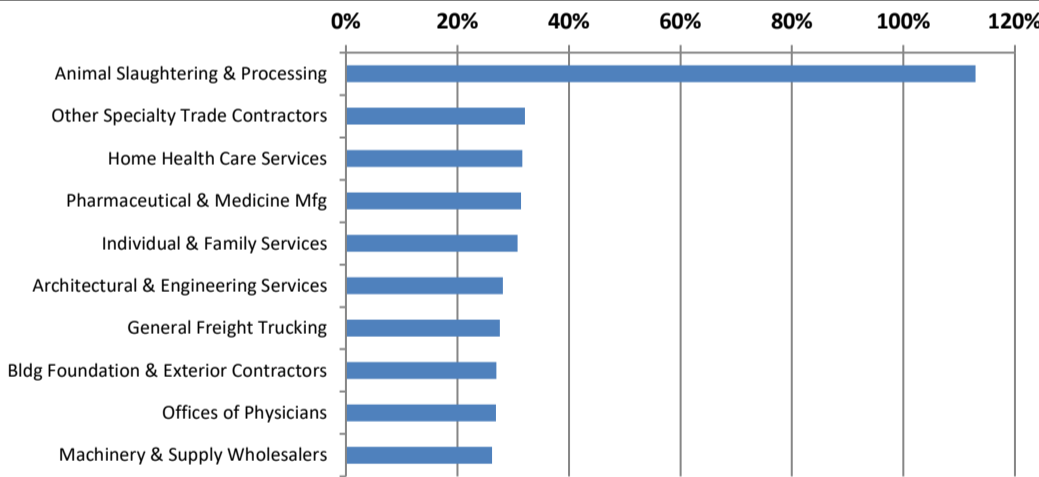
US Labor Force Statistics				
	Oct-18	Sep-18	Oct-17	OTY
CLF	162,723,000	161,958,000	160,465,000	2,258,000
Employed	156,952,000	156,191,000	154,223,000	2,729,000
Unemployed	5,771,000	5,766,000	6,242,000	-471,000
Rate	3.5%	3.6%	3.9%	-0.4%

Continued Claims for the Week of the 12th				
	Oct-18	Sep-18	Oct-17	OTY
WDA	728	765	1,035	-307
Texas	79,605	85,803	105,966	-26,361

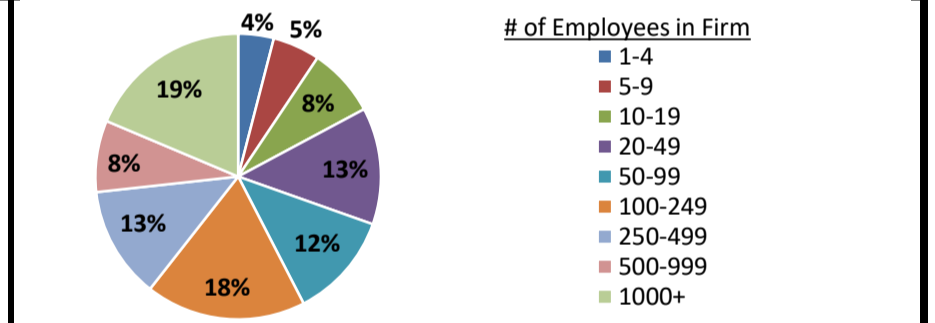
Historical Unemployment Rates



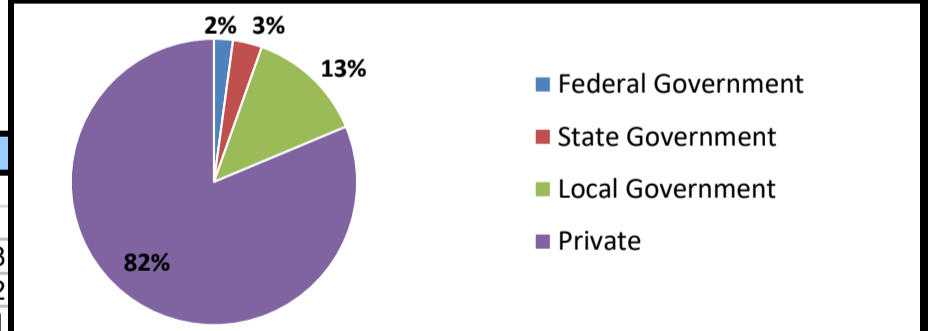
Projected Fastest Growing Industries in WDA (% growth 2014-2024)



Employment by Size Class (1st Quarter 2018)



Employment by Ownership (1st Quarter 2018)



Average Weekly Wage (1st Quarter 2018)

	Q1 2018	Q4 2017	Q1 2017	Change	
				Quarter	Year
WDA	\$877	\$880	\$838	-\$4	\$38
Texas	\$1,167	\$1,109	\$1,124	\$58	\$42
US	\$1,152	\$1,109	\$1,111	\$43	\$41

Employment by Industry (1st Quarter 2018, Percent Change)

Industry	Employment	% of total	% Change	
			Quarter	Year
Natural resources and mining	1,970	1.4%	-0.3%	5.7%
Construction	9,070	6.5%	0.8%	1.6%
Manufacturing	18,750	13.4%	-0.7%	1.9%
Trade, transportation and utilities	26,456	18.8%	-2.3%	-1.1%
Information	1,264	0.9%	3.5%	0.6%
Financial activities	7,793	5.6%	-2.0%	0.8%
Professional and business services	12,435	8.9%	-2.6%	-6.5%
Education and health services	38,426	27.4%	-0.8%	0.0%
Leisure and hospitality	14,345	10.2%	-1.6%	-1.9%
Other services	3,268	2.3%	-2.4%	-2.2%
Public administration	6,579	4.7%	-0.6%	-0.9%
Total	140,356	100.0%	-1.3%	-0.6%

Employment by Industry (1st Quarter 2018)

