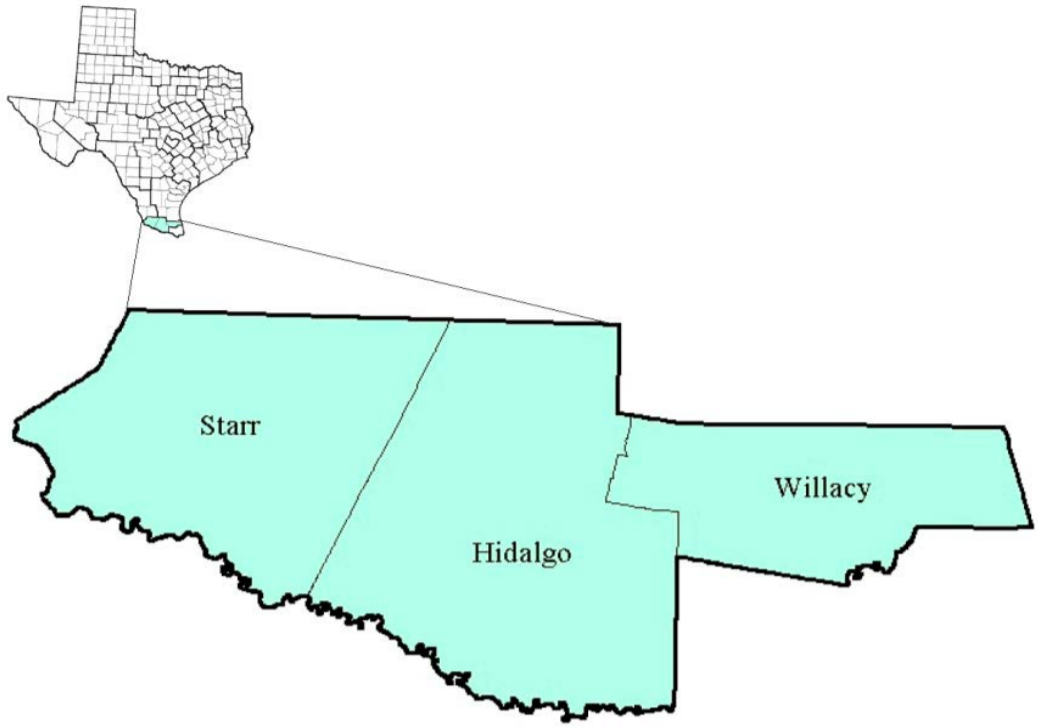


# Lower Rio Grande Valley Workforce Development Area

July 2018



WDA Labor Force Statistics				
	Jul-18	Jun-18	Jul-17	OTY
CLF	373,190	378,848	367,720	5,470
Employed	346,190	350,258	337,772	8,418
Unemployed	27,000	28,590	29,948	-2,948
Rate	7.2%	7.5%	8.1%	-0.9%

Texas Labor Force Statistics				
	Jul-18	Jun-18	Jul-17	OTY
CLF	13,840,527	13,844,974	13,571,881	268,646
Employed	13,283,897	13,262,013	12,967,640	316,257
Unemployed	556,630	582,961	604,241	-47,611
Rate	4.0%	4.2%	4.5%	-0.5%

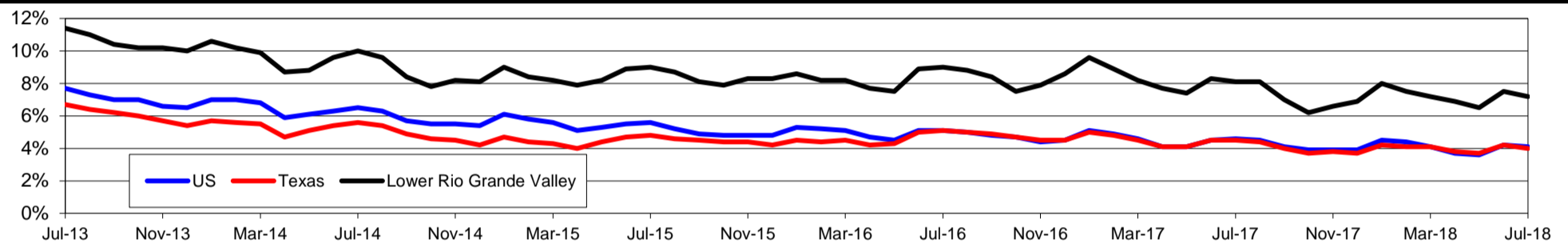
  

US Labor Force Statistics				
	Jul-18	Jun-18	Jul-17	OTY
CLF	163,734,000	163,277,000	161,911,000	1,823,000
Employed	157,004,000	156,465,000	154,470,000	2,534,000
Unemployed	6,730,000	6,812,000	7,441,000	-711,000
Rate	4.1%	4.2%	4.6%	-0.5%

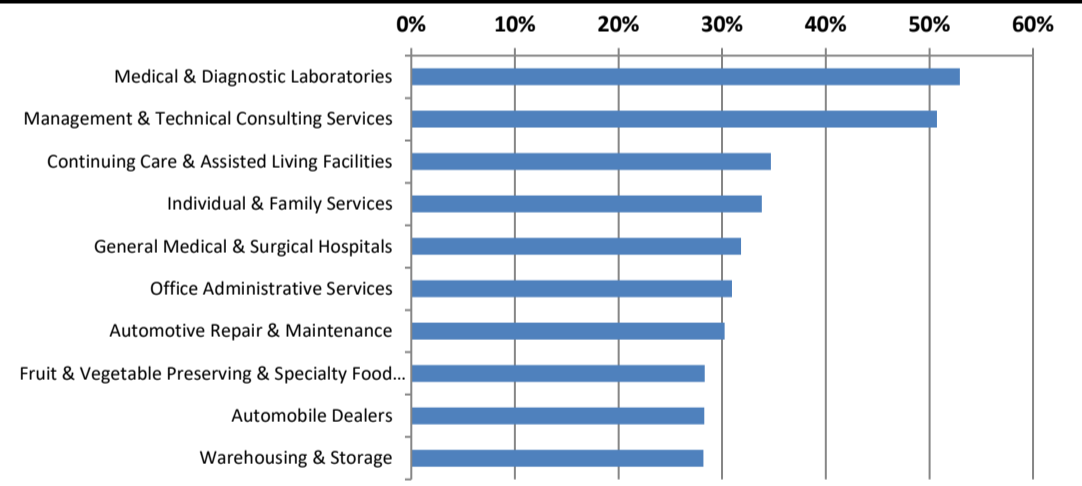
  

Continued Claims for the Week of the 12th				
	Jul-18	Jun-18	Jul-17	OTY
WDA	6,311	6,572	8,055	-1,744
Texas	102,645	101,223	124,432	-21,787

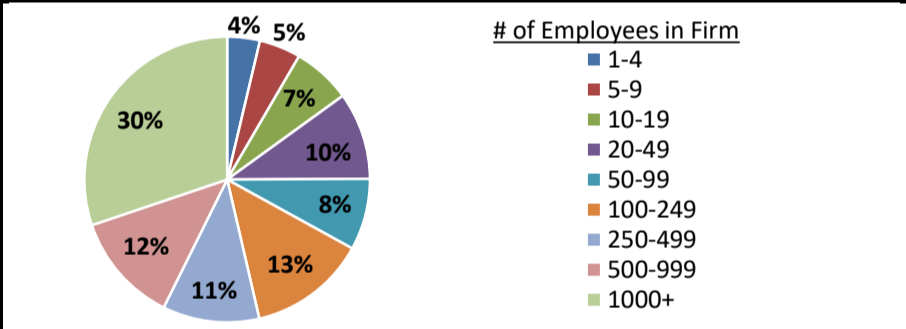
## Historical Unemployment Rates



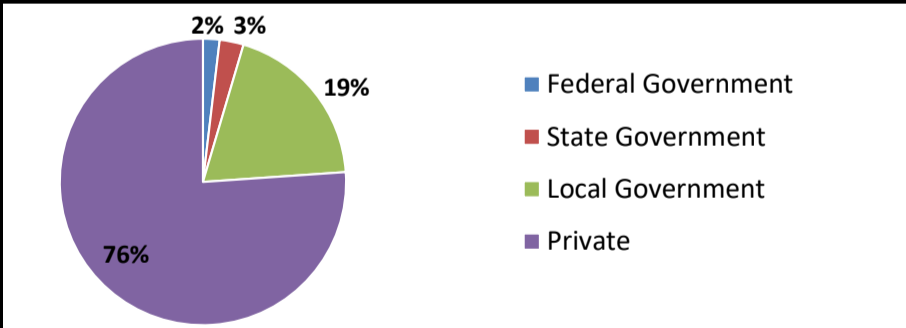
## Projected Fastest Growing Industries in WDA (% growth 2014-2024)



## Employment by Size Class (4th Quarter 2017)



## Employment by Ownership (4th Quarter 2017)



## Average Weekly Wage (4th Quarter 2017)

	Q4 2017	Q3 2017	Q4 2016	Change	
				Quarter	Year
WDA	\$660	\$644	\$644	\$16	\$16
Texas	\$1,109	\$1,032	\$1,072	\$77	\$37
US	\$1,109	\$1,020	\$1,067	\$89	\$42

## Employment by Industry (4th Quarter 2017, Percent Change)

Industry	Employment	% of total	% Change	
			Quarter	Year
Natural resources and mining	4,824	1.7%	8.4%	-0.5%
Construction	8,358	3.0%	-0.3%	5.5%
Manufacturing	6,983	2.5%	4.3%	6.2%
Trade, transportation and utilities	57,967	20.9%	1.6%	-2.6%
Information	3,025	1.1%	4.5%	13.3%
Financial activities	9,310	3.4%	1.5%	1.7%
Professional and business services	18,065	6.5%	5.1%	4.8%
Education and health services	123,135	44.3%	5.7%	2.8%
Leisure and hospitality	26,714	9.6%	-1.5%	2.6%
Other services	4,268	1.5%	2.1%	5.3%
Public administration	15,153	5.5%	-0.4%	0.4%
<b>Total</b>	<b>277,802</b>	<b>100.0%</b>	<b>3.3%</b>	<b>1.8%</b>

## Employment by Industry (4th Quarter 2017)

