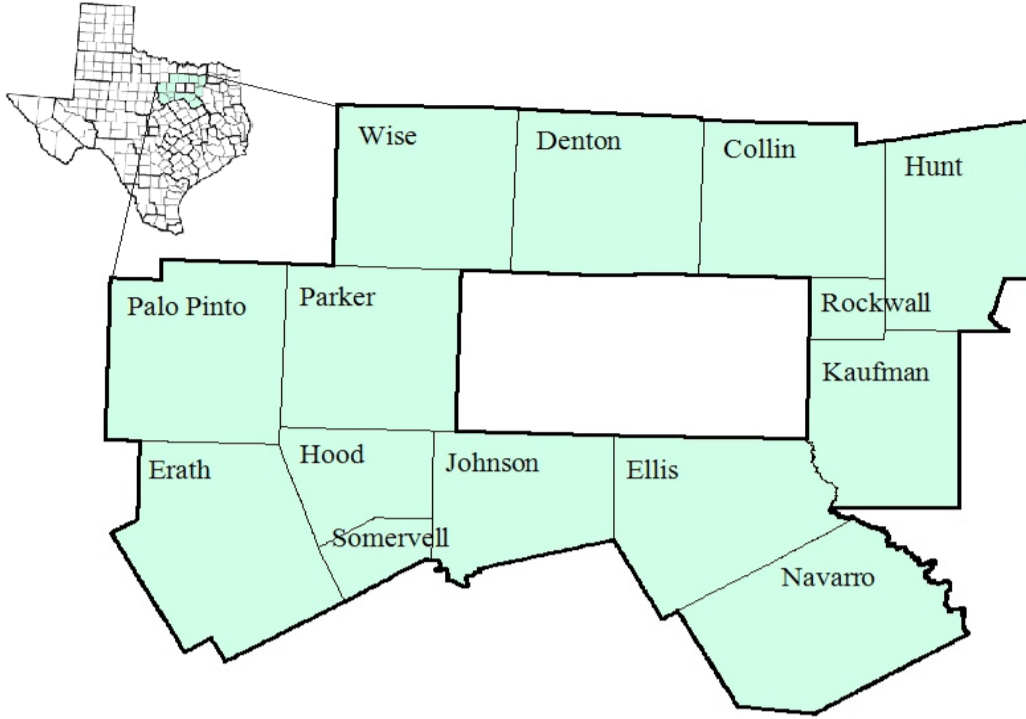


North Central Texas Workforce Development Area

October 2018



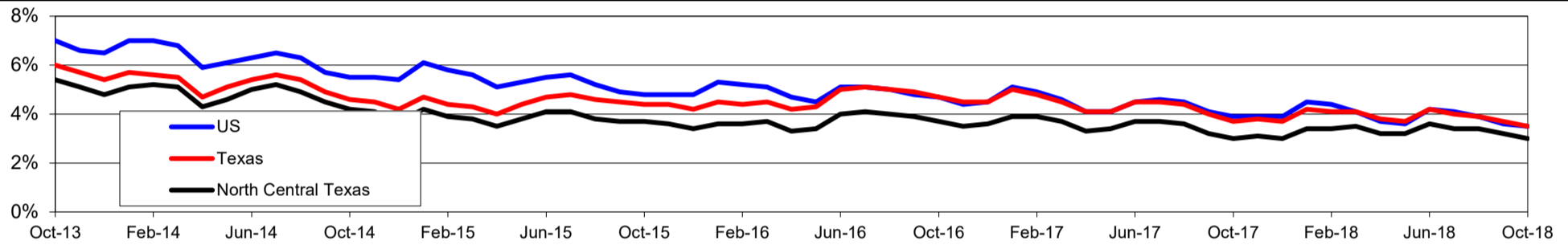
WDA Labor Force Statistics				
	Oct-18	Sep-18	Oct-17	OTY
CLF	1,538,792	1,527,428	1,492,542	46,250
Employed	1,492,765	1,478,241	1,447,933	44,832
Unemployed	46,027	49,187	44,609	1,418
Rate	3.0%	3.2%	3.0%	0.0%

Texas Labor Force Statistics				
	Oct-18	Sep-18	Oct-17	OTY
CLF	13,869,529	13,802,138	13,536,215	333,314
Employed	13,390,620	13,285,102	13,034,581	356,039
Unemployed	478,909	517,036	501,634	-22,725
Rate	3.5%	3.7%	3.7%	-0.2%

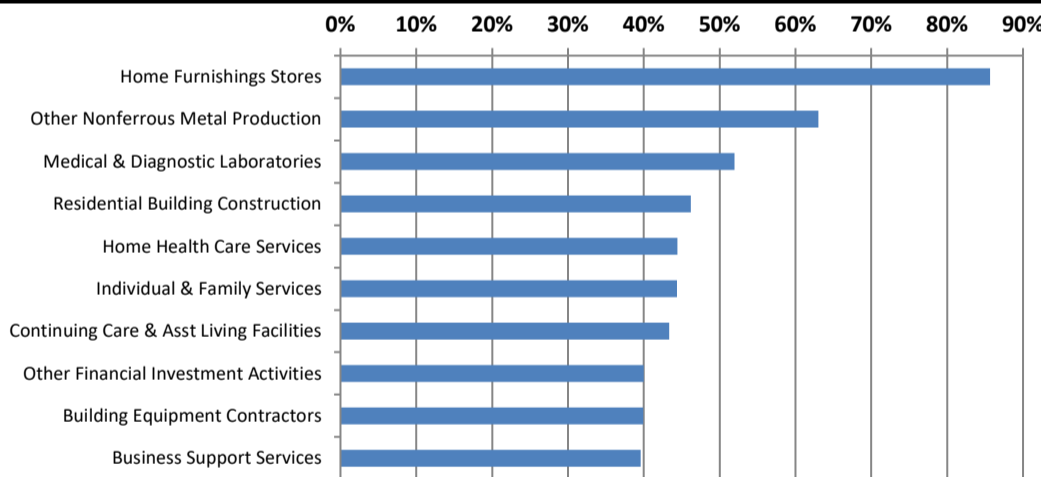
US Labor Force Statistics				
	Oct-18	Sep-18	Oct-17	OTY
CLF	162,723,000	161,958,000	160,465,000	2,258,000
Employed	156,952,000	156,191,000	154,223,000	2,729,000
Unemployed	5,771,000	5,766,000	6,242,000	-471,000
Rate	3.5%	3.6%	3.9%	-0.4%

Continued Claims for the Week of the 12th				
	Oct-18	Sep-18	Oct-17	OTY
WDA	8,200	8,543	9,018	-818
Texas	79,605	85,803	105,966	-26,361

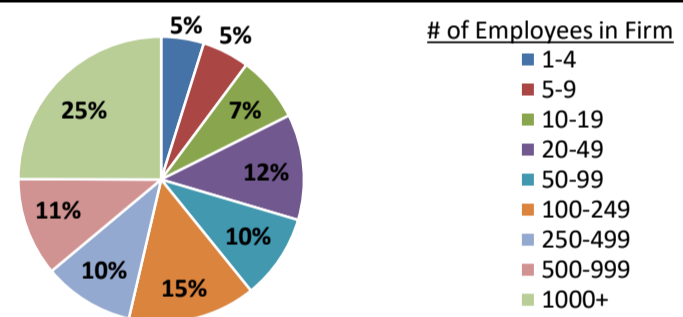
Historical Unemployment Rates



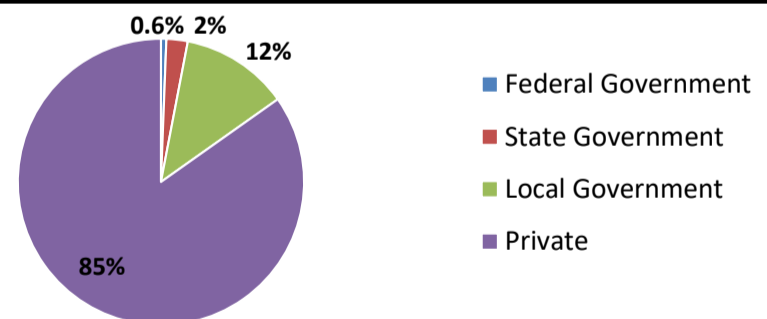
Projected Fastest Growing Industries in WDA (% growth 2014-2024)



Employment by Size Class (1st Quarter 2018)



Employment by Ownership (1st Quarter 2018)



Average Weekly Wage (1st Quarter 2018)

	Q1 2018	Q4 2017	Q1 2017	Change	
				Quarter	Year
WDA	\$1,110	\$1,065	\$1,076	\$44	\$33
Texas	\$1,167	\$1,109	\$1,124	\$58	\$42
US	\$1,152	\$1,109	\$1,111	\$43	\$41

Employment by Industry (1st Quarter 2018, Percent Change)

Industry	Employment	% of total	% Change	
			Quarter	Year
Natural resources and mining	11,674	1.2%	-4.7%	8.1%
Construction	55,015	5.8%	1.9%	8.3%
Manufacturing	83,184	8.7%	0.7%	3.4%
Trade, transportation and utilities	196,926	20.7%	-2.3%	2.0%
Information	21,003	2.2%	-2.9%	-5.0%
Financial activities	65,821	6.9%	0.0%	6.4%
Professional and business services	124,754	13.1%	0.1%	5.3%
Education and health services	227,111	23.9%	-1.0%	1.6%
Leisure and hospitality	115,242	12.1%	0.9%	5.9%
Other services	25,316	2.7%	-0.8%	2.7%
Public administration	24,931	2.6%	0.6%	4.3%
Total	950,977	100.0%	-0.5%	3.5%

Employment by Industry (1st Quarter 2018)

