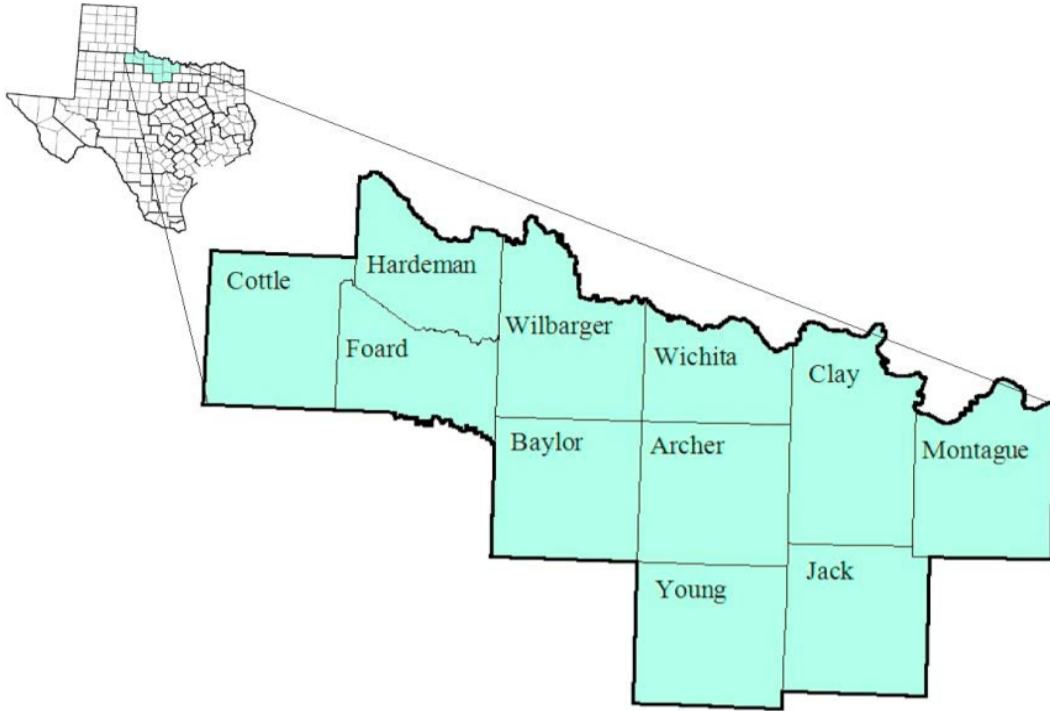


# North Texas Workforce Development Area

## May 2018



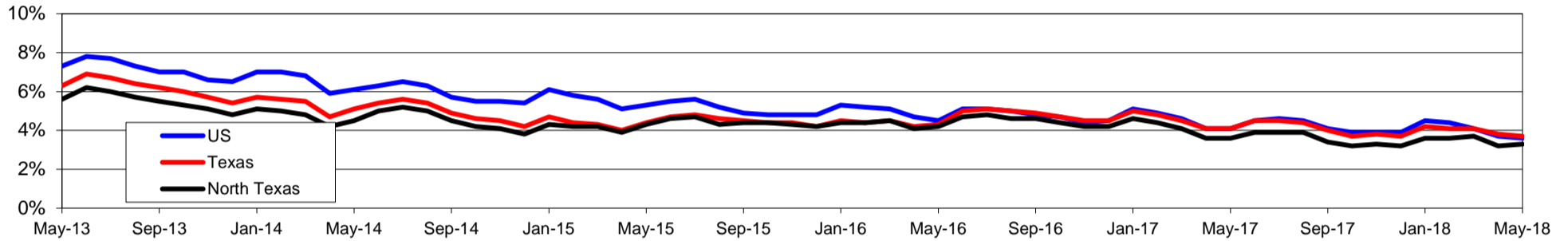
WDA Labor Force Statistics				
	May-18	Apr-18	May-17	OTY
CLF	96,336	96,306	95,754	582
Employed	93,183	93,199	92,274	909
Unemployed	3,153	3,107	3,480	-327
Rate	3.3%	3.2%	3.6%	-0.3%

Texas Labor Force Statistics				
	May-18	Apr-18	May-17	OTY
CLF	13,836,477	13,863,075	13,498,726	337,751
Employed	13,321,229	13,342,454	12,940,819	380,410
Unemployed	515,248	520,621	557,907	-42,659
Rate	3.7%	3.8%	4.1%	-0.4%

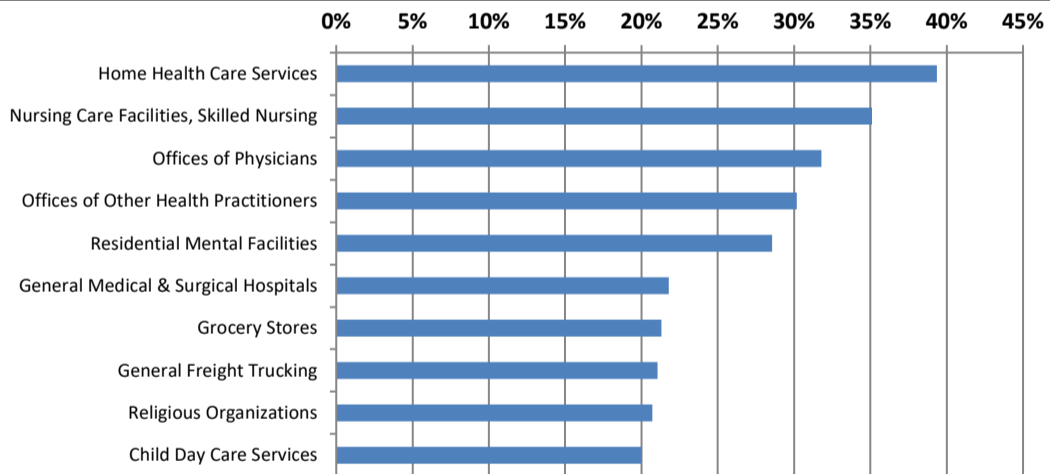
US Labor Force Statistics				
	May-18	Apr-18	May-17	OTY
CLF	161,765,000	161,280,000	159,979,000	1,786,000
Employed	156,009,000	155,348,000	153,407,000	2,602,000
Unemployed	5,756,000	5,932,000	6,572,000	-816,000
Rate	3.6%	3.7%	4.1%	-0.5%

Continued Claims for the Week of the 12th				
	May-18	Apr-18	May-17	OTY
WDA	432	433	509	-77
Texas	93,184	96,035	113,603	-20,419

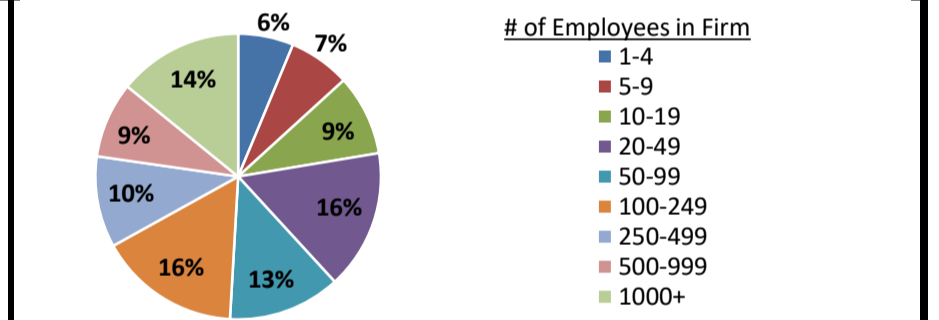
### Historical Unemployment Rates



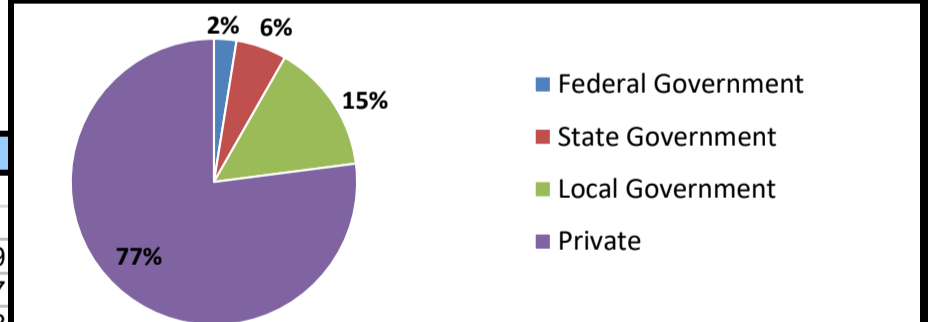
### Projected Fastest Growing Industries in WDA (% growth 2014-2024)



### Employment by Size Class (4th Quarter 2017)



### Employment by Ownership (4th Quarter 2017)



### Average Weekly Wage (4th Quarter 2017)

	Q4 2017	Q3 2017	Q4 2016	Change	
				Quarter	Year
WDA	\$789	\$737	\$769	\$52	\$19
Texas	\$1,109	\$1,032	\$1,072	\$77	\$37
US	\$1,065	\$1,020	\$1,067	\$45	-\$2

### Employment by Industry (4th Quarter 2017, Percent Change)

Industry	Employment	% of total	% Change	
			Quarter	Year
Natural resources and mining	4,028	4.9%	1.9%	2.9%
Construction	3,400	4.2%	0.1%	-3.7%
Manufacturing	7,693	9.4%	1.4%	4.1%
Trade, transportation and utilities	15,943	19.5%	0.9%	0.5%
Information	887	1.1%	-1.9%	-4.0%
Financial activities	3,486	4.3%	1.2%	-0.7%
Professional and business services	5,864	7.2%	2.5%	16.1%
Education and health services	24,536	30.0%	3.9%	4.0%
Leisure and hospitality	8,551	10.5%	-0.9%	-1.4%
Other services	2,331	2.9%	-1.5%	-4.5%
Public administration	4,952	6.1%	-2.4%	-1.7%
<b>Total</b>	<b>81,671</b>	<b>100.0%</b>	<b>1.5%</b>	<b>2.2%</b>

### Employment by Industry (4th Quarter 2017)

