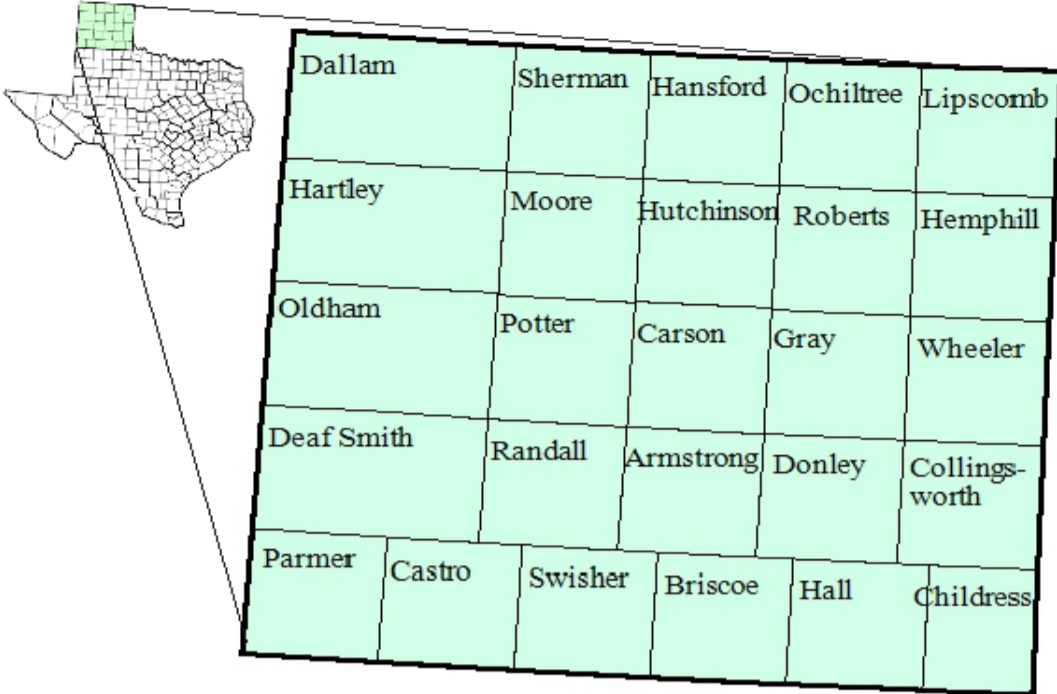


# Panhandle Workforce Development Area

## October 2018



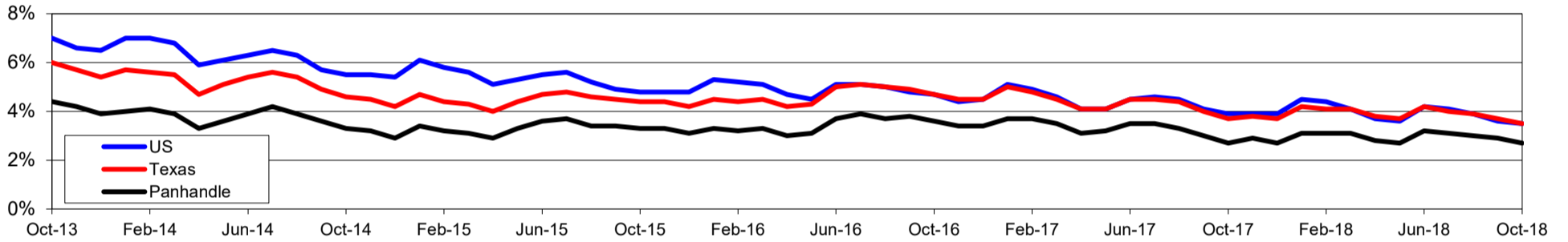
WDA Labor Force Statistics				
	Oct-18	Sep-18	Oct-17	OTY
CLF	209,622	208,814	207,619	2,003
Employed	204,060	202,834	201,915	2,145
Unemployed	5,562	5,980	5,704	-142
Rate	2.7%	2.9%	2.7%	0.0%

Texas Labor Force Statistics				
	Oct-18	Sep-18	Oct-17	OTY
CLF	13,869,529	13,802,138	13,536,215	333,314
Employed	13,390,620	13,285,102	13,034,581	356,039
Unemployed	478,909	517,036	501,634	-22,725
Rate	3.5%	3.7%	3.7%	-0.2%

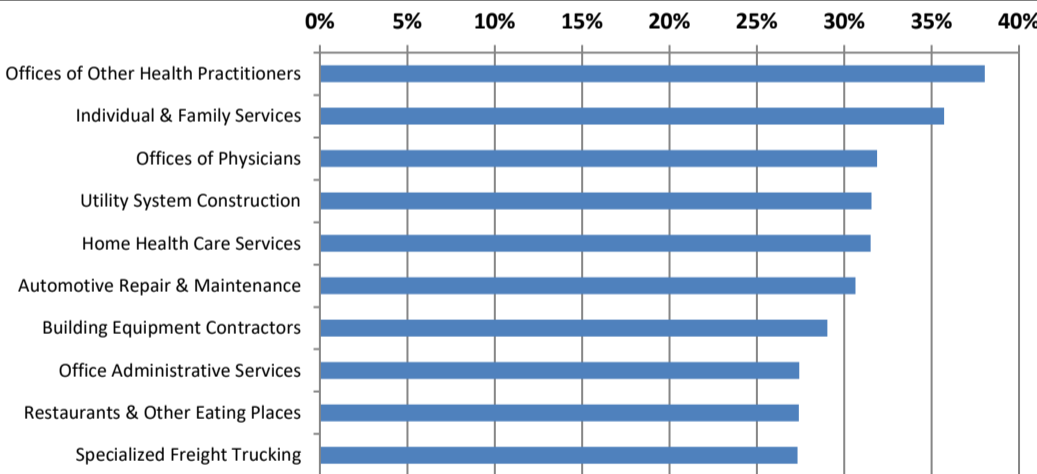
US Labor Force Statistics				
	Oct-18	Sep-18	Oct-17	OTY
CLF	162,723,000	161,958,000	160,465,000	2,258,000
Employed	156,952,000	156,191,000	154,223,000	2,729,000
Unemployed	5,771,000	5,766,000	6,242,000	-471,000
Rate	3.5%	3.6%	3.9%	-0.4%

Continued Claims for the Week of the 12th				
	Oct-18	Sep-18	Oct-17	OTY
WDA	560	594	749	-189
Texas	79,605	85,803	105,966	-26,361

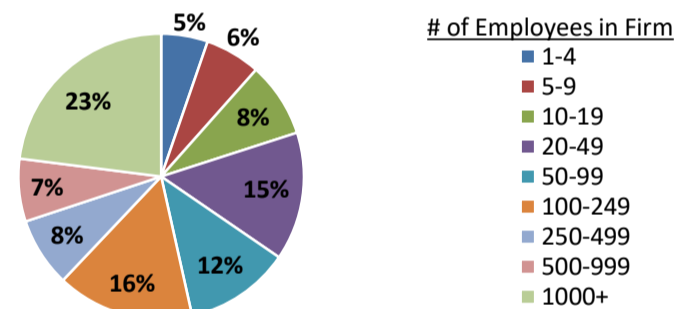
### Historical Unemployment Rates



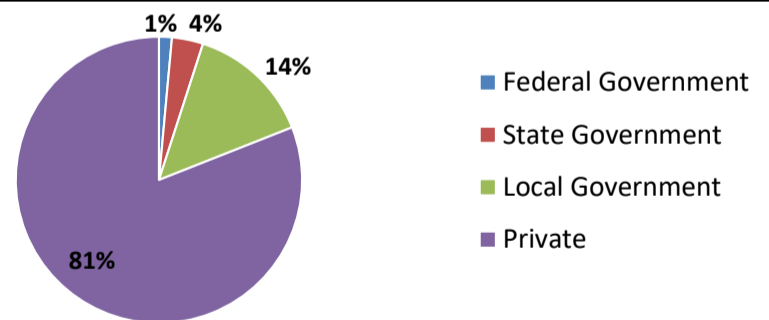
### Projected Fastest Growing Industries in WDA (% growth 2014-2024)



### Employment by Size Class (1st Quarter 2018)



### Employment by Ownership (1st Quarter 2018)



### Average Weekly Wage (1st Quarter 2018)

	Q1 2018	Q4 2017	Q1 2017	Change	
				Quarter	Year
WDA	\$905	\$916	\$876	-\$11	\$29
Texas	\$1,167	\$1,109	\$1,124	\$58	\$42
US	\$1,152	\$1,109	\$1,111	\$43	\$41

### Employment by Industry (1st Quarter 2018, Percent Change)

Industry	Employment	% of total	% Change	
			Quarter	Year
Natural resources and mining	15,462	8.3%	-2.3%	5.4%
Construction	11,621	6.3%	-0.9%	1.6%
Manufacturing	24,704	13.3%	-0.3%	2.5%
Trade, transportation and utilities	37,003	19.9%	-1.5%	-0.8%
Information	1,902	1.0%	9.5%	6.1%
Financial activities	8,541	4.6%	-0.6%	0.4%
Professional and business services	10,921	5.9%	-6.3%	-7.3%
Education and health services	43,001	23.2%	-0.4%	0.0%
Leisure and hospitality	18,110	9.8%	2.3%	3.7%
Other services	5,488	3.0%	-0.4%	-0.3%
Public administration	8,793	4.7%	-0.2%	-2.8%
<b>Total</b>	<b>185,546</b>	<b>100.0%</b>	<b>-0.8%</b>	<b>0.5%</b>

### Employment by Industry (1st Quarter 2018)

