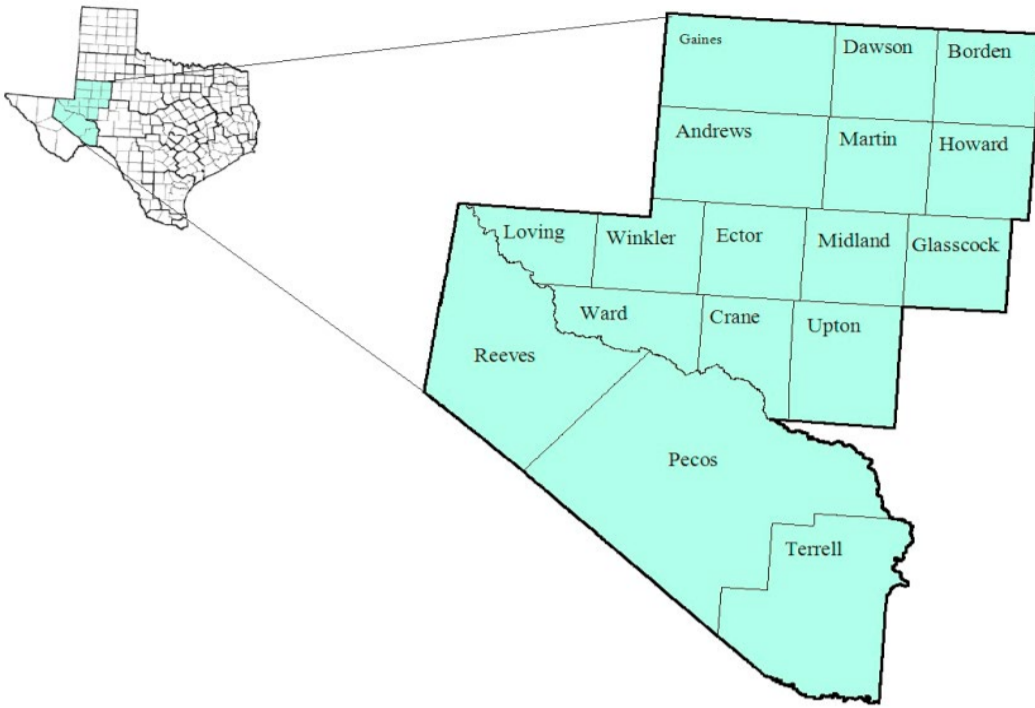


Permian Basin Workforce Development Area

October 2018



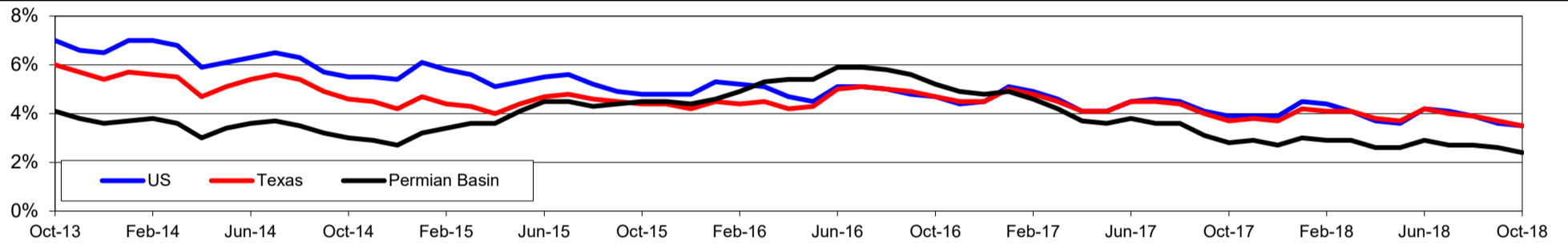
WDA Labor Force Statistics				
	Oct-18	Sep-18	Oct-17	OTY
CLF	247,312	246,462	236,087	11,225
Employed	241,376	240,161	229,360	12,016
Unemployed	5,936	6,301	6,727	-791
Rate	2.4%	2.6%	2.8%	-0.4%

Texas Labor Force Statistics				
	Oct-18	Sep-18	Oct-17	OTY
CLF	13,869,529	13,802,138	13,536,215	333,314
Employed	13,390,620	13,285,102	13,034,581	356,039
Unemployed	478,909	517,036	501,634	-22,725
Rate	3.5%	3.7%	3.7%	-0.2%

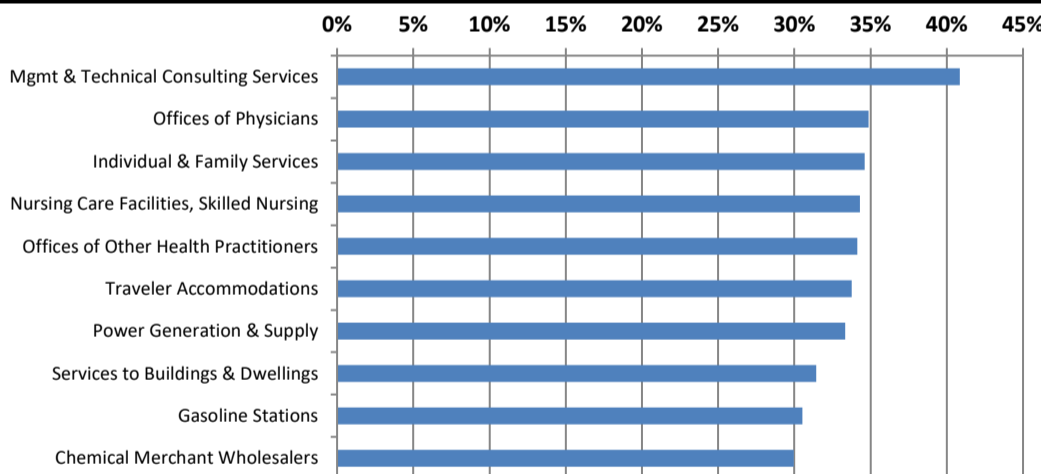
US Labor Force Statistics				
	Oct-18	Sep-18	Oct-17	OTY
CLF	162,723,000	161,958,000	160,465,000	2,258,000
Employed	156,952,000	156,191,000	154,223,000	2,729,000
Unemployed	5,771,000	5,766,000	6,242,000	-471,000
Rate	3.5%	3.6%	3.9%	-0.4%

Continued Claims for the Week of the 12th				
	Oct-18	Sep-18	Oct-17	OTY
WDA	602	569	815	-213
Texas	79,605	85,803	105,966	-26,361

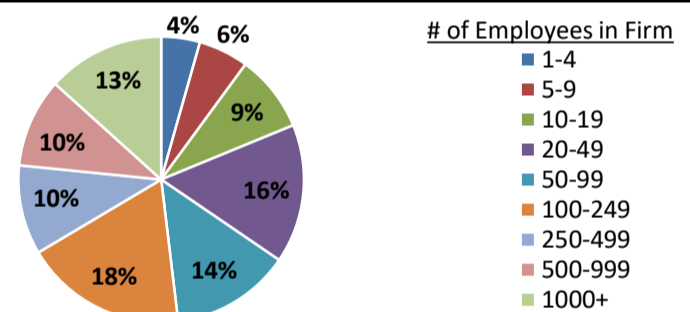
Historical Unemployment Rates



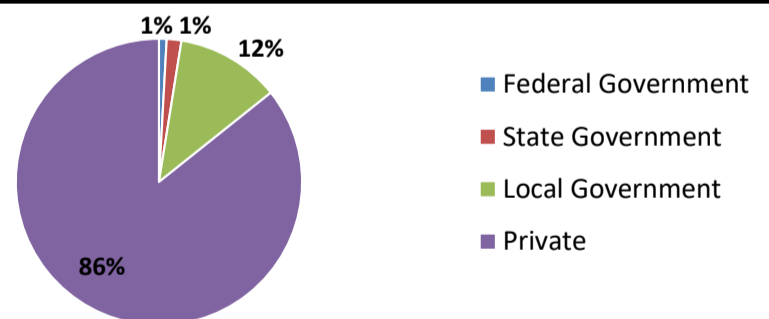
Projected Fastest Growing Industries in WDA (% growth 2014-2024)



Employment by Size Class (1st Quarter 2018)



Employment by Ownership (1st Quarter 2018)



Average Weekly Wage (1st Quarter 2018)

	Q1 2018	Q4 2017	Q1 2017	Change	
				Quarter	Year
WDA	\$1,293	\$1,202	\$1,189	\$91	\$104
Texas	\$1,167	\$1,109	\$1,124	\$58	\$42
US	\$1,152	\$1,109	\$1,111	\$43	\$41

Employment by Industry (1st Quarter 2018, Percent Change)

Industry	Employment	% of total	% Change	
			Quarter	Year
Natural resources and mining	49,121	21.2%	6.2%	27.2%
Construction	20,002	8.6%	13.6%	39.6%
Manufacturing	10,264	4.4%	3.3%	16.7%
Trade, transportation and utilities	48,756	21.0%	1.0%	10.5%
Information	2,116	0.9%	-0.7%	4.5%
Financial activities	9,609	4.1%	5.0%	9.9%
Professional and business services	15,879	6.9%	1.4%	11.1%
Education and health services	38,563	16.6%	-0.9%	-2.6%
Leisure and hospitality	23,308	10.1%	1.0%	10.0%
Other services	7,066	3.0%	3.1%	10.4%
Public administration	7,075	3.1%	-2.6%	-5.5%
Total	231,759	100.0%	2.9%	12.7%

Employment by Industry (1st Quarter 2018)

