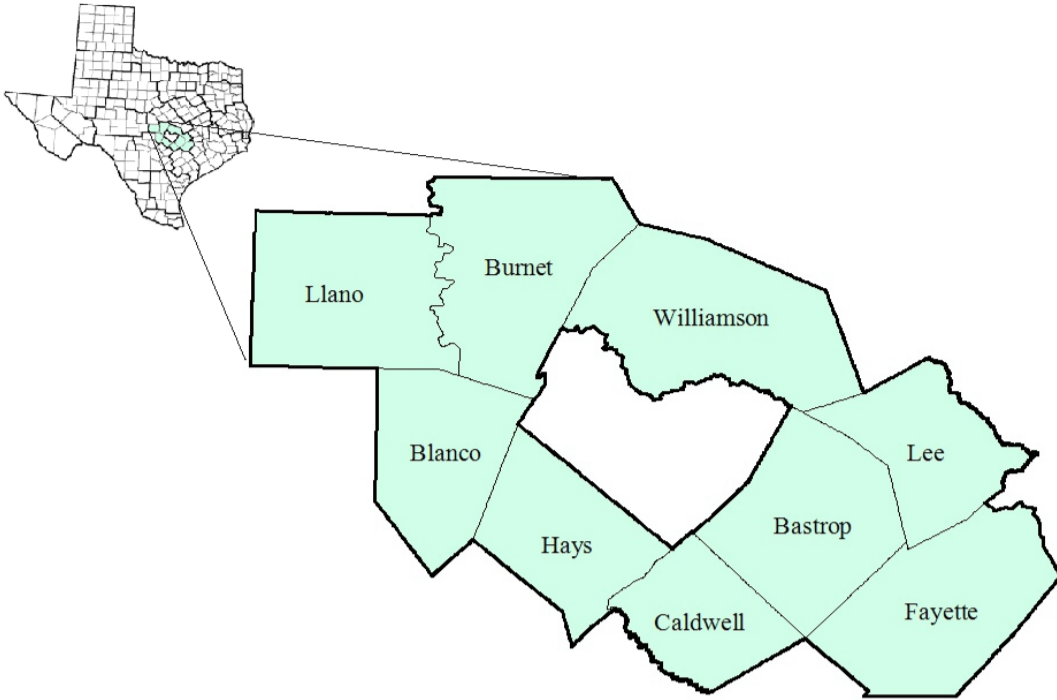


# Rural Capital Workforce Development Area

May 2018



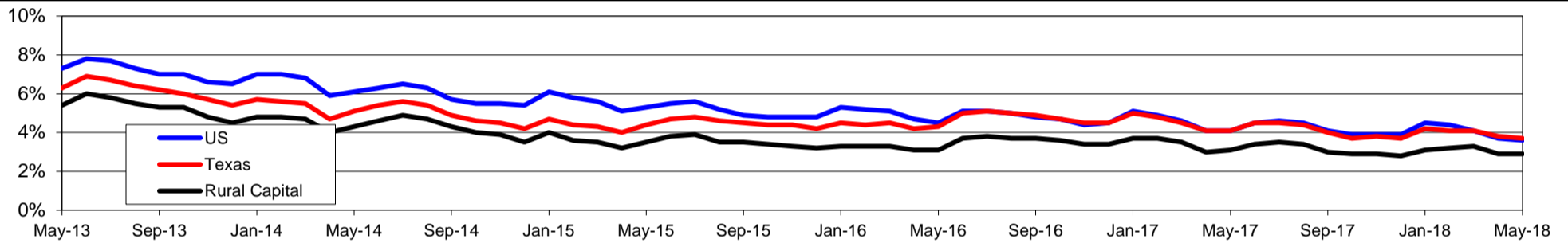
WDA Labor Force Statistics				
	May-18	Apr-18	May-17	OTY
CLF	527,942	528,247	511,975	15,967
Employed	512,554	512,965	495,961	16,593
Unemployed	15,388	15,282	16,014	-626
Rate	2.9%	2.9%	3.1%	-0.2%

Texas Labor Force Statistics				
	May-18	Apr-18	May-17	OTY
CLF	13,836,477	13,863,075	13,498,726	337,751
Employed	13,321,229	13,342,454	12,940,819	380,410
Unemployed	515,248	520,621	557,907	-42,659
Rate	3.7%	3.8%	4.1%	-0.4%

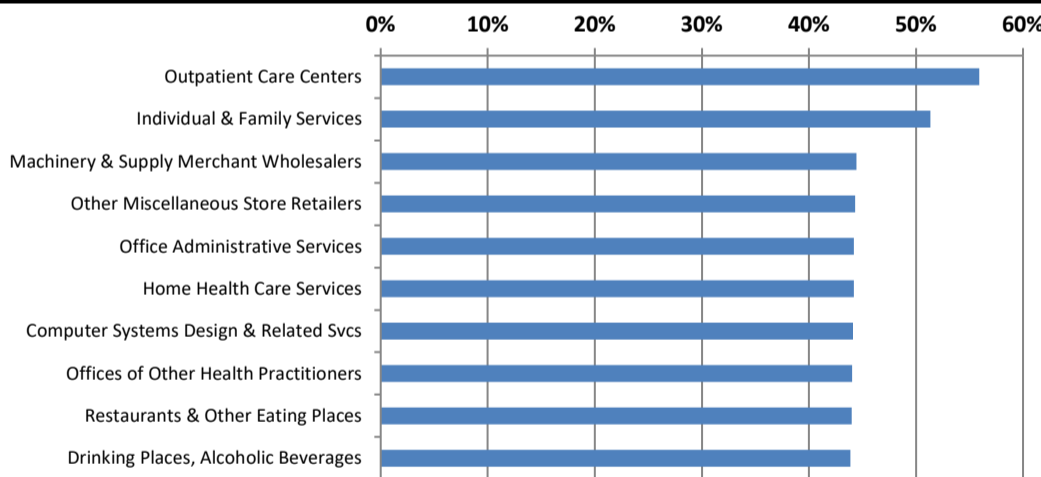
US Labor Force Statistics				
	May-18	Apr-18	May-17	OTY
CLF	161,765,000	161,280,000	159,979,000	1,786,000
Employed	156,009,000	155,348,000	153,407,000	2,602,000
Unemployed	5,756,000	5,932,000	6,572,000	-816,000
Rate	3.6%	3.7%	4.1%	-0.5%

Continued Claims for the Week of the 12th				
	May-18	Apr-18	May-17	OTY
WDA	2,520	2,549	2,836	-316
Texas	93,184	96,035	113,603	-20,419

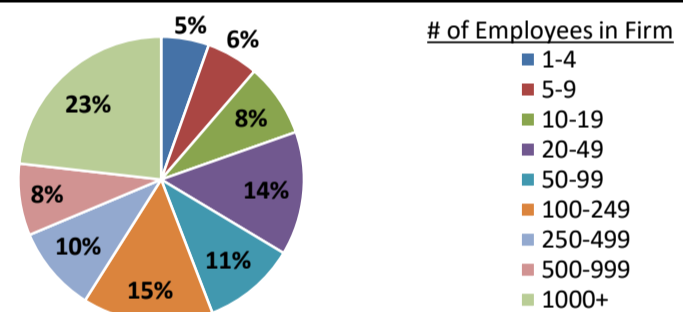
## Historical Unemployment Rates



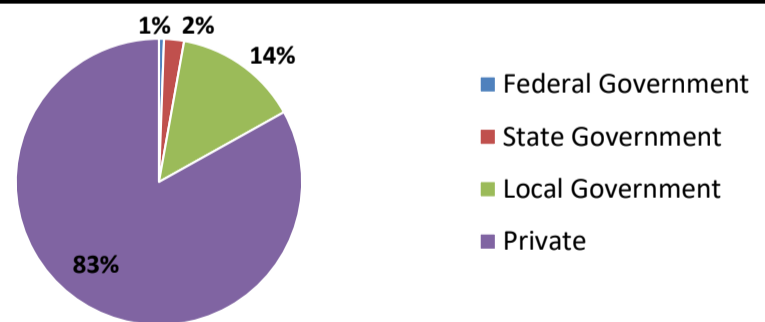
## Projected Fastest Growing Industries in WDA (% growth 2014-2024)



## Employment by Size Class (4th Quarter 2017)



## Employment by Ownership (4th Quarter 2017)



## Average Weekly Wage (4th Quarter 2017)

	Q4 2017	Q3 2017	Q4 2016	Change	
				Quarter	Year
WDA	\$934	\$900	\$903	\$33	\$31
Texas	\$1,109	\$1,032	\$1,072	\$77	\$37
US	\$1,065	\$1,020	\$1,067	\$45	-\$2

## Employment by Industry (4th Quarter 2017, Percent Change)

Industry	Employment	% of total	% Change	
			Quarter	Year
Natural resources and mining	4,369	1.4%	3.7%	13.4%
Construction	24,952	8.2%	-2.6%	6.3%
Manufacturing	21,220	7.0%	0.2%	3.3%
Trade, transportation and utilities	74,641	24.6%	3.4%	4.2%
Information	3,366	1.1%	6.5%	0.4%
Financial activities	13,187	4.4%	-0.1%	3.2%
Professional and business services	28,685	9.5%	0.9%	2.8%
Education and health services	72,288	23.9%	8.0%	2.7%
Leisure and hospitality	40,602	13.4%	-1.2%	6.3%
Other services	9,431	3.1%	-0.8%	2.2%
Public administration	10,076	3.3%	-0.8%	2.5%
<b>Total</b>	<b>302,817</b>	<b>100.0%</b>	<b>2.4%</b>	<b>4.0%</b>

## Employment by Industry (4th Quarter 2017)

