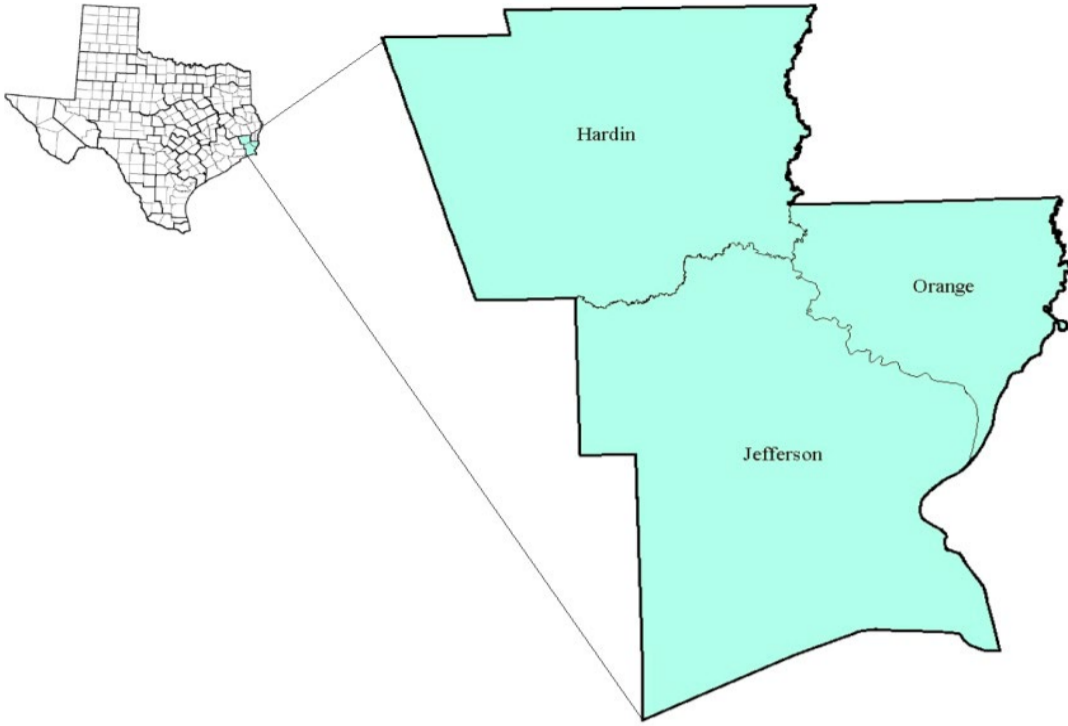


South East Texas Workforce Development Area

October 2018



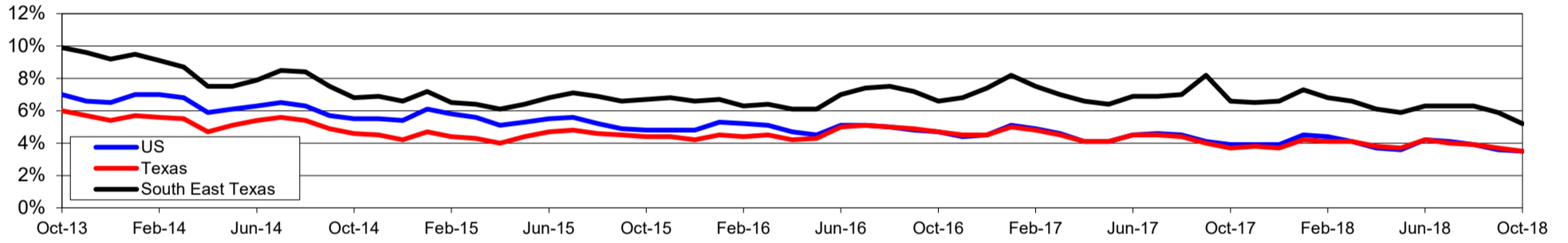
WDA Labor Force Statistics				
	Oct-18	Sep-18	Oct-17	OTY
CLF	166,875	165,275	168,640	-1,765
Employed	158,230	155,520	157,483	747
Unemployed	8,645	9,755	11,157	-2,512
Rate	5.2%	5.9%	6.6%	-1.4%

Texas Labor Force Statistics				
	Oct-18	Sep-18	Oct-17	OTY
CLF	13,869,529	13,802,138	13,536,215	333,314
Employed	13,390,620	13,285,102	13,034,581	356,039
Unemployed	478,909	517,036	501,634	-22,725
Rate	3.5%	3.7%	3.7%	-0.2%

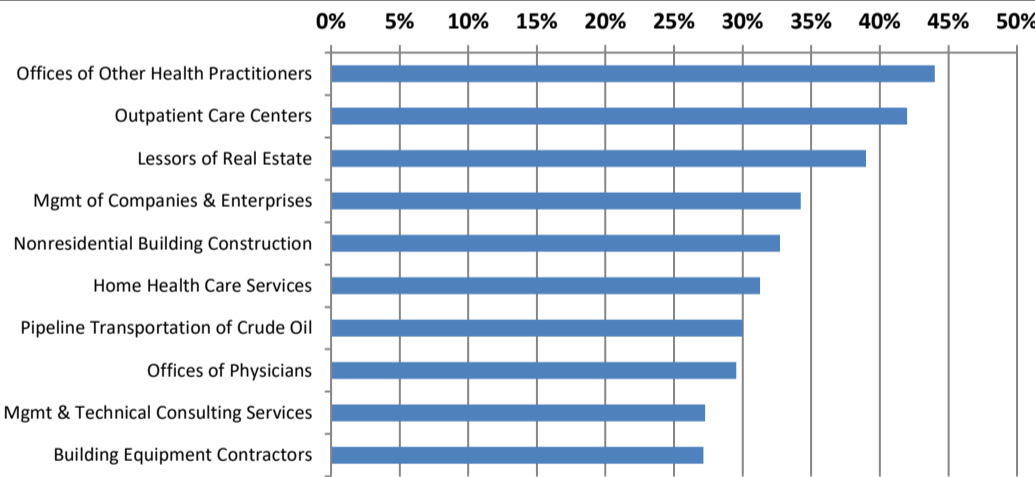
US Labor Force Statistics				
	Oct-18	Sep-18	Oct-17	OTY
CLF	162,723,000	161,958,000	160,465,000	2,258,000
Employed	156,952,000	156,191,000	154,223,000	2,729,000
Unemployed	5,771,000	5,766,000	6,242,000	-471,000
Rate	3.5%	3.6%	3.9%	-0.4%

Continued Claims for the Week of the 12th				
	Oct-18	Sep-18	Oct-17	OTY
WDA	1,687	2,022	3,605	-1,918
Texas	79,605	85,803	105,966	-26,361

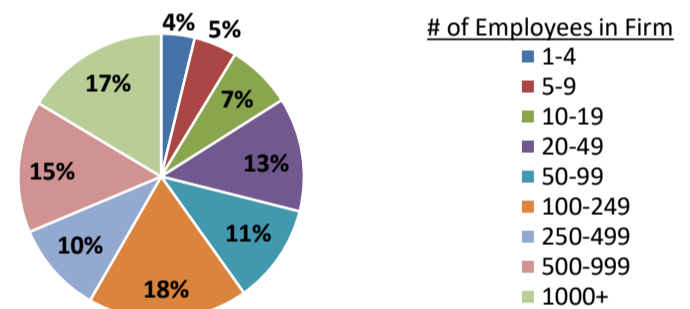
Historical Unemployment Rates



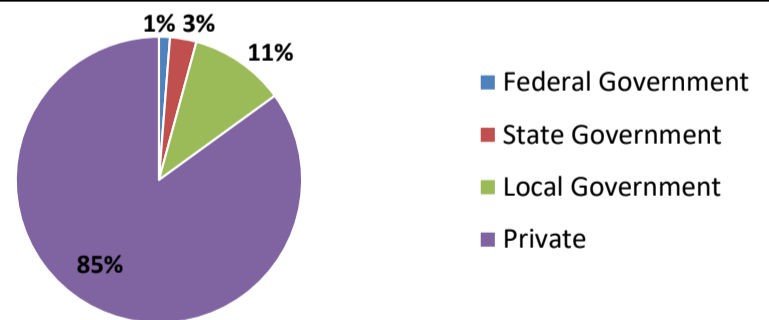
Projected Fastest Growing Industries in WDA (% growth 2014-2024)



Employment by Size Class (1st Quarter 2018)



Employment by Ownership (1st Quarter 2018)



Average Weekly Wage (1st Quarter 2018)

	Q1 2018	Q4 2017	Q1 2017	Change	
				Quarter	Year
WDA	\$1,127	\$1,093	\$1,093	\$34	\$34
Texas	\$1,167	\$1,109	\$1,124	\$58	\$42
US	\$1,152	\$1,109	\$1,111	\$43	\$41

Employment by Industry (1st Quarter 2018, Percent Change)

Industry	Employment	% of total	% Change	
			Quarter	Year
Natural resources and mining	1,172	0.7%	5.6%	5.0%
Construction	19,118	12.2%	2.8%	9.7%
Manufacturing	20,831	13.3%	-4.3%	-2.9%
Trade, transportation and utilities	32,276	20.6%	-0.5%	-0.1%
Information	1,180	0.8%	-2.2%	-7.7%
Financial activities	5,621	3.6%	-1.6%	-1.5%
Professional and business services	13,843	8.8%	0.7%	-3.3%
Education and health services	34,471	22.0%	0.7%	-2.2%
Leisure and hospitality	15,910	10.2%	1.6%	1.4%
Other services	4,874	3.1%	-5.8%	-7.4%
Public administration	7,246	4.6%	-1.2%	-1.7%
Total	156,542	100.0%	-0.3%	-0.4%

Employment by Industry (1st Quarter 2018)

