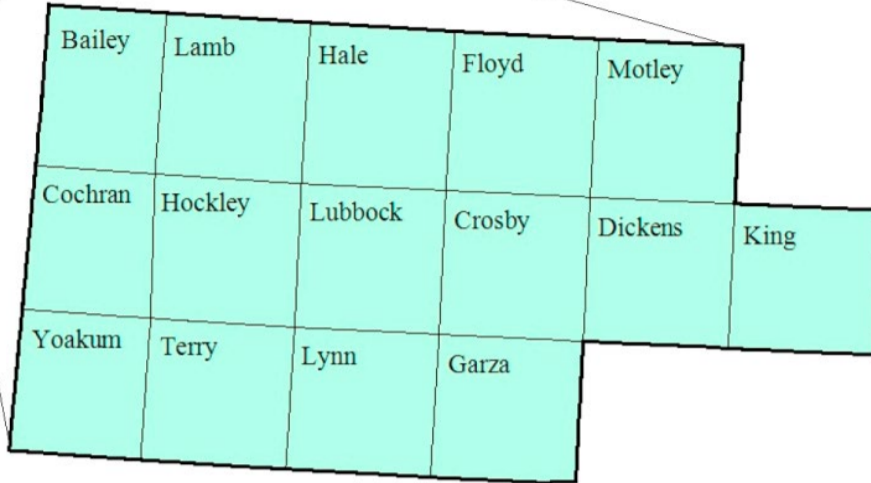


South Plains Workforce Development Area

October 2018



WDA Labor Force Statistics

	Oct-18	Sep-18	Oct-17	OTY
CLF	213,386	212,708	209,050	4,336
Employed	207,108	205,909	202,934	4,174
Unemployed	6,278	6,799	6,116	162
Rate	2.9%	3.2%	2.9%	0.0%

Texas Labor Force Statistics

	Oct-18	Sep-18	Oct-17	OTY
CLF	13,869,529	13,802,138	13,536,215	333,314
Employed	13,390,620	13,285,102	13,034,581	356,039
Unemployed	478,909	517,036	501,634	-22,725
Rate	3.5%	3.7%	3.7%	-0.2%

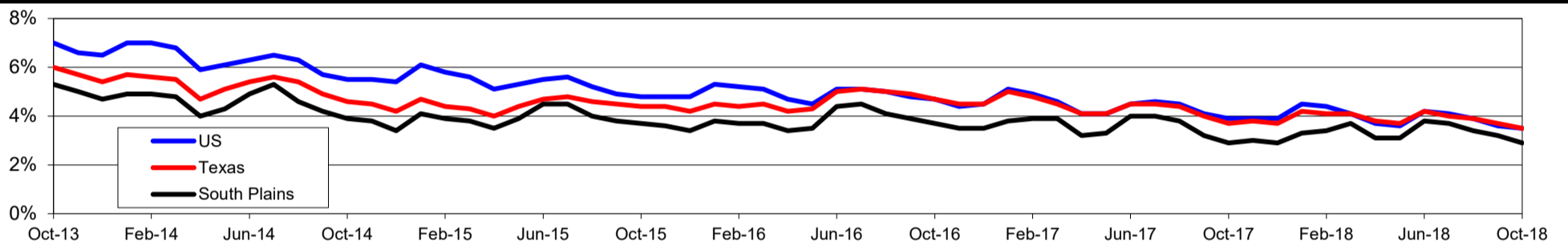
US Labor Force Statistics

	Oct-18	Sep-18	Oct-17	OTY
CLF	162,723,000	161,958,000	160,465,000	2,258,000
Employed	156,952,000	156,191,000	154,223,000	2,729,000
Unemployed	5,771,000	5,766,000	6,242,000	-471,000
Rate	3.5%	3.6%	3.9%	-0.4%

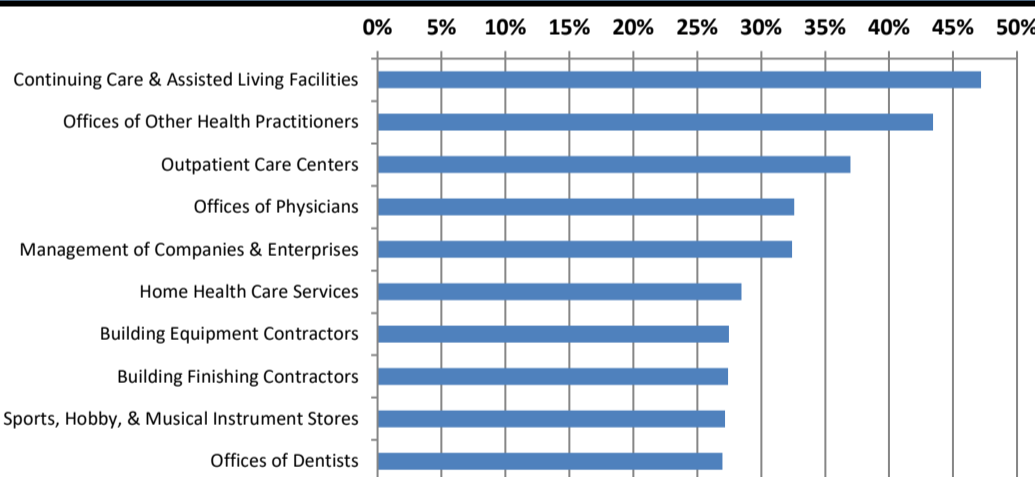
Continued Claims for the Week of the 12th

	Oct-18	Sep-18	Oct-17	OTY
WDA	711	780	787	-76
Texas	79,605	85,803	105,966	-26,361

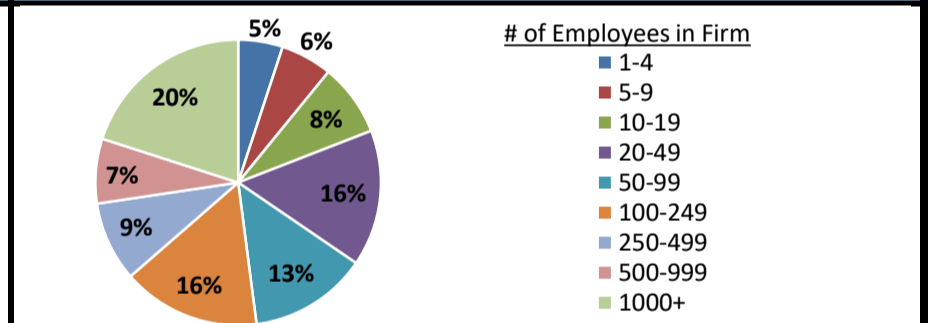
Historical Unemployment Rates



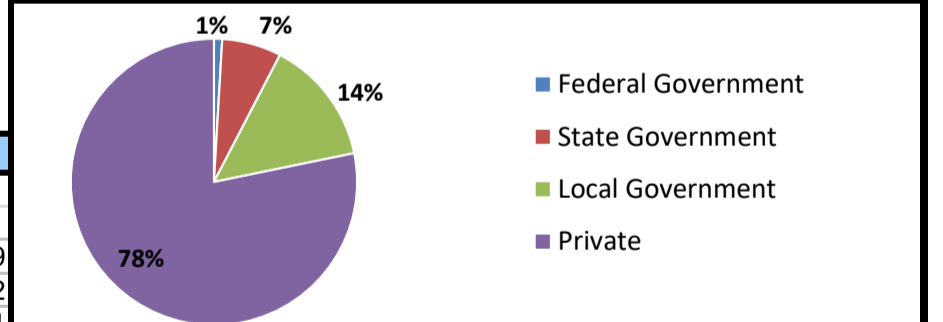
Projected Fastest Growing Industries in WDA (% growth 2014-2024)



Employment by Size Class (1st Quarter 2018)



Employment by Ownership (1st Quarter 2018)



Average Weekly Wage (1st Quarter 2018)

	Q1 2018	Q4 2017	Q1 2017	Change	
				Quarter	Year
WDA	\$839	\$859	\$800	-\$20	\$39
Texas	\$1,167	\$1,109	\$1,124	\$58	\$42
US	\$1,152	\$1,109	\$1,111	\$43	\$41

Employment by Industry (1st Quarter 2018, Percent Change)

Industry	Employment	% of total	% Change	
			Quarter	Year
Natural resources and mining	10,825	6.0%	-11.1%	4.9%
Construction	9,718	5.3%	1.1%	7.1%
Manufacturing	6,172	3.4%	-1.6%	-1.9%
Trade, transportation and utilities	39,604	21.8%	-2.3%	0.7%
Information	3,162	1.7%	-0.8%	-4.1%
Financial activities	8,825	4.9%	-3.3%	-2.0%
Professional and business services	13,782	7.6%	0.0%	2.2%
Education and health services	54,289	29.8%	-2.4%	-1.9%
Leisure and hospitality	22,140	12.2%	-0.6%	3.7%
Other services	6,021	3.3%	-1.1%	0.8%
Public administration	7,376	4.1%	-0.5%	-1.0%
Total	181,914	100.0%	-2.2%	0.6%

Employment by Industry (1st Quarter 2018)

