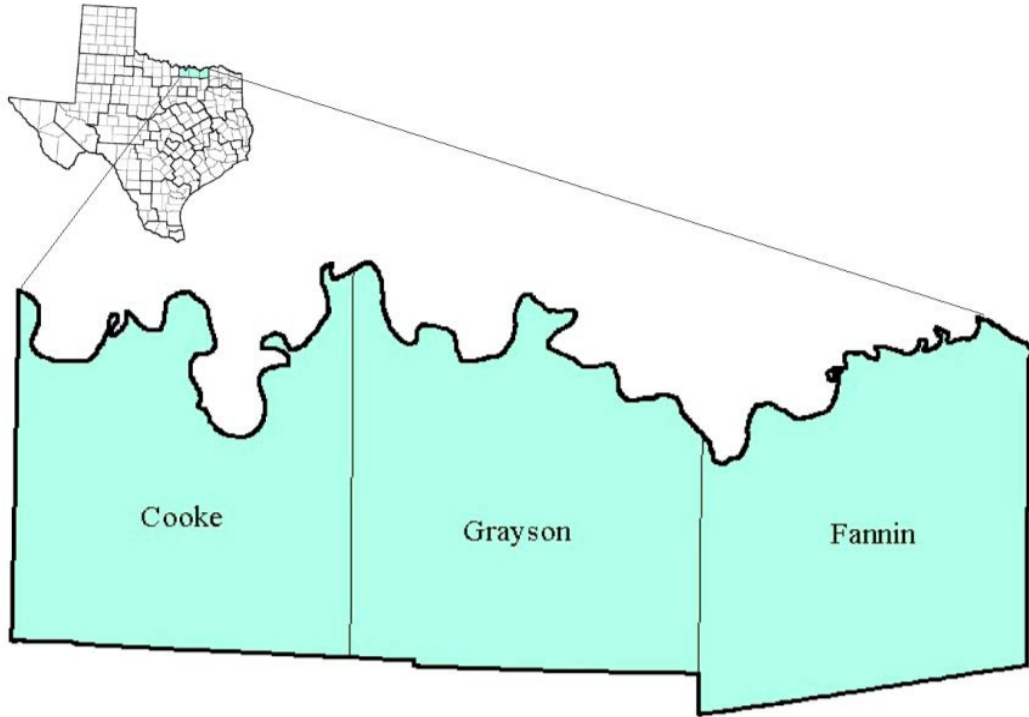


# Texoma Workforce Development Area

## July 2018



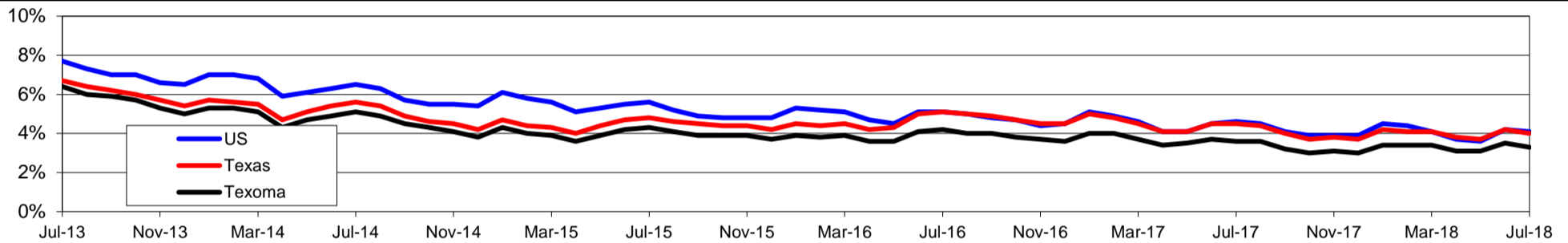
WDA Labor Force Statistics				
	Jul-18	Jun-18	Jul-17	OTY
CLF	98,905	98,593	97,434	1,471
Employed	95,653	95,146	93,921	1,732
Unemployed	3,252	3,447	3,513	-261
Rate	3.3%	3.5%	3.6%	-0.3%

Texas Labor Force Statistics				
	Jul-18	Jun-18	Jul-17	OTY
CLF	13,840,527	13,844,974	13,571,881	268,646
Employed	13,283,897	13,262,013	12,967,640	316,257
Unemployed	556,630	582,961	604,241	-47,611
Rate	4.0%	4.2%	4.5%	-0.5%

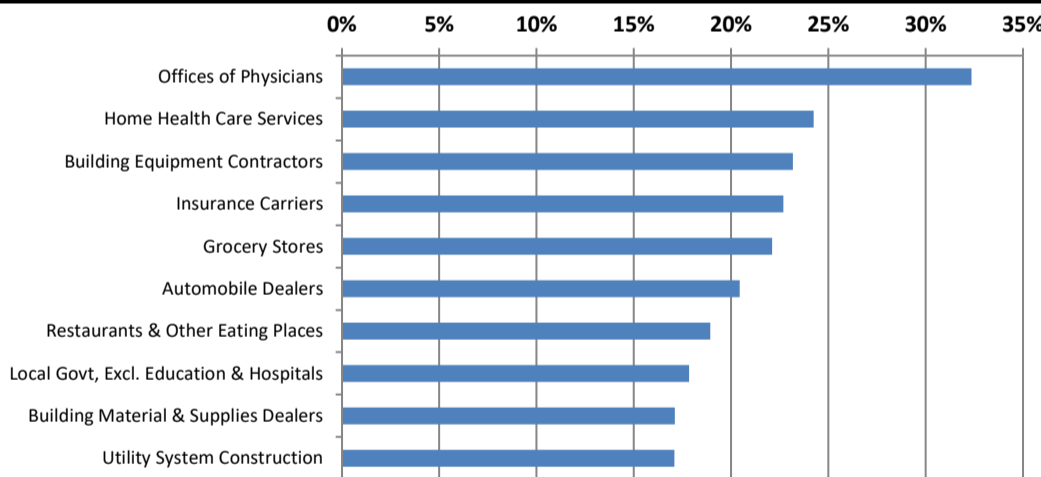
US Labor Force Statistics				
	Jul-18	Jun-18	Jul-17	OTY
CLF	163,734,000	163,277,000	161,911,000	1,823,000
Employed	157,004,000	156,465,000	154,470,000	2,534,000
Unemployed	6,730,000	6,812,000	7,441,000	-711,000
Rate	4.1%	4.2%	4.6%	-0.5%

Continued Claims for the Week of the 12th				
	Jul-18	Jun-18	Jul-17	OTY
WDA	456	455	558	-102
Texas	102,645	101,223	124,432	-21,787

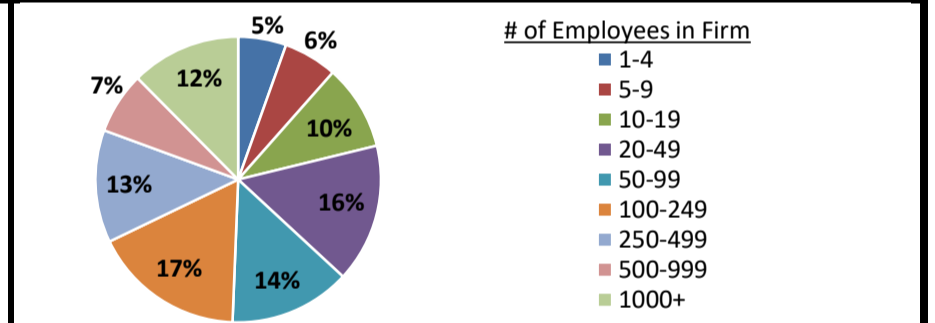
### Historical Unemployment Rates



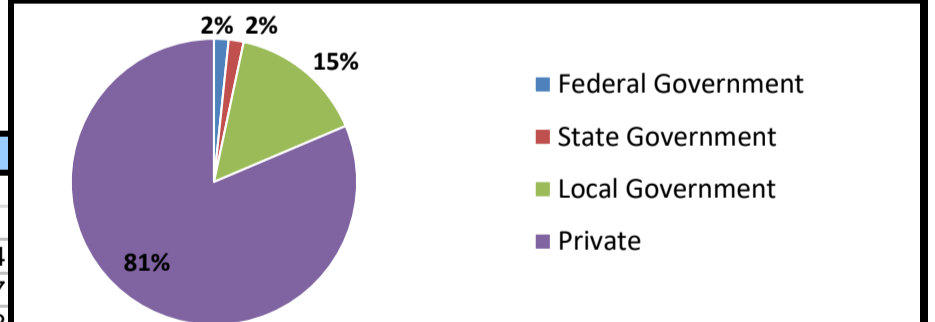
### Projected Fastest Growing Industries in WDA (% growth 2014-2024)



### Employment by Size Class (4th Quarter 2017)



### Employment by Ownership (4th Quarter 2017)



### Average Weekly Wage (4th Quarter 2017)

	Q4 2017	Q3 2017	Q4 2016	Change	
				Quarter	Year
WDA	\$861	\$795	\$828	\$66	\$34
Texas	\$1,109	\$1,032	\$1,072	\$77	\$37
US	\$1,109	\$1,020	\$1,067	\$89	\$42

### Employment by Industry (4th Quarter 2017, Percent Change)

Industry	Employment	% of total	% Change	
			Quarter	Year
Natural resources and mining	1,905	2.8%	2.4%	33.1%
Construction	3,783	5.6%	-1.1%	-2.7%
Manufacturing	9,257	13.7%	-1.5%	-3.0%
Trade, transportation and utilities	13,032	19.3%	2.8%	-0.8%
Information	516	0.8%	-1.1%	-6.7%
Financial activities	3,240	4.8%	-13.2%	-15.2%
Professional and business services	4,175	6.2%	4.1%	10.3%
Education and health services	20,094	29.8%	4.3%	2.2%
Leisure and hospitality	7,095	10.5%	-5.6%	-2.0%
Other services	1,400	2.1%	-4.2%	-9.4%
Public administration	2,972	4.4%	-1.9%	-2.0%
<b>Total</b>	<b>67,469</b>	<b>100.0%</b>	<b>0.3%</b>	<b>-0.2%</b>

### Employment by Industry (4th Quarter 2017)

