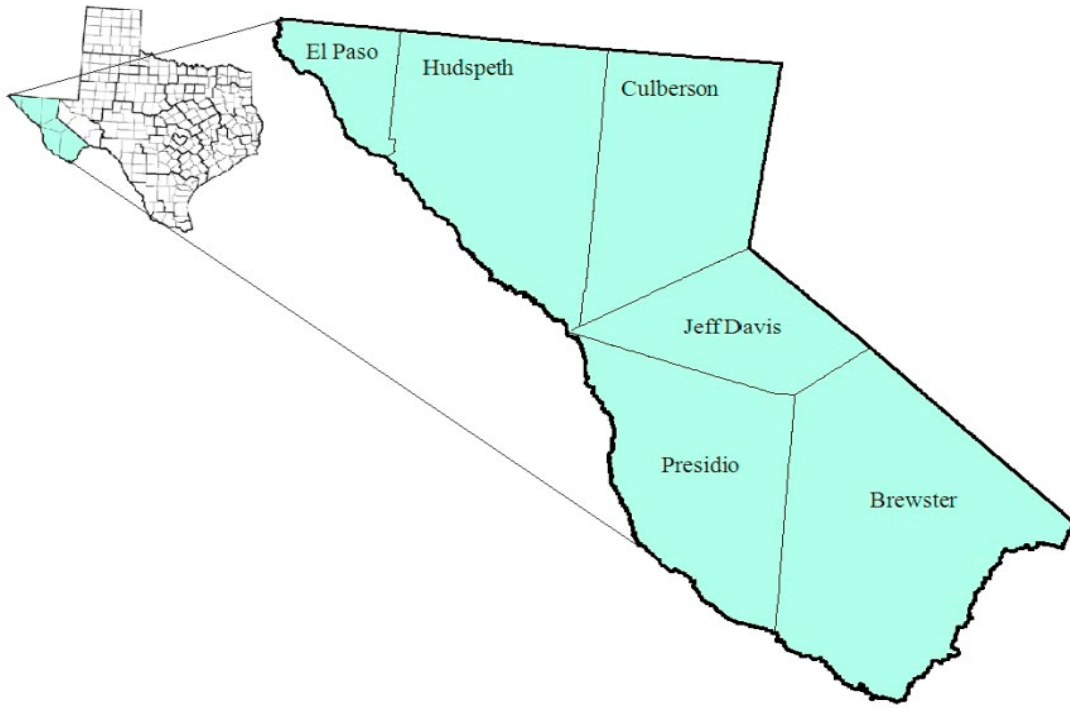


Borderplex Workforce Development Area

October 2018



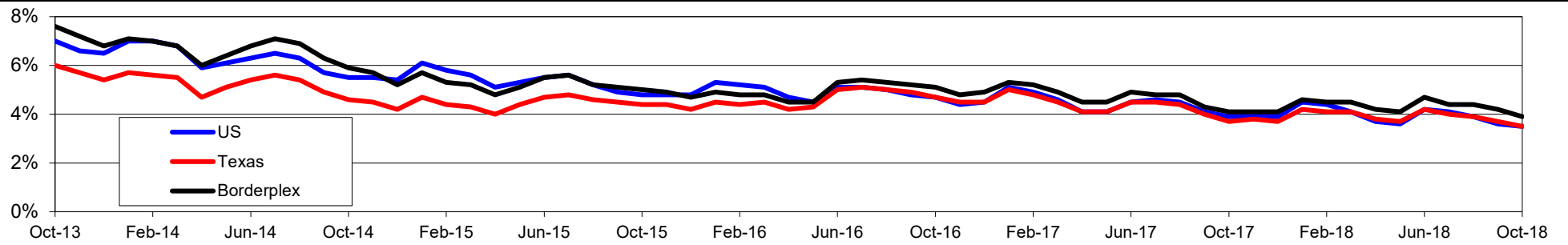
| WDA Labor Force Statistics | | | | |
|----------------------------|---------|---------|---------|-------|
| | Oct-18 | Sep-18 | Oct-17 | OTY |
| CLF | 370,855 | 369,359 | 362,880 | 7,975 |
| Employed | 356,390 | 353,775 | 348,143 | 8,247 |
| Unemployed | 14,465 | 15,584 | 14,737 | -272 |
| Rate | 3.9% | 4.2% | 4.1% | -0.2% |

| Texas Labor Force Statistics | | | | |
|------------------------------|------------|------------|------------|---------|
| | Oct-18 | Sep-18 | Oct-17 | OTY |
| CLF | 13,869,529 | 13,802,138 | 13,536,215 | 333,314 |
| Employed | 13,390,620 | 13,285,102 | 13,034,581 | 356,039 |
| Unemployed | 478,909 | 517,036 | 501,634 | -22,725 |
| Rate | 3.5% | 3.7% | 3.7% | -0.2% |

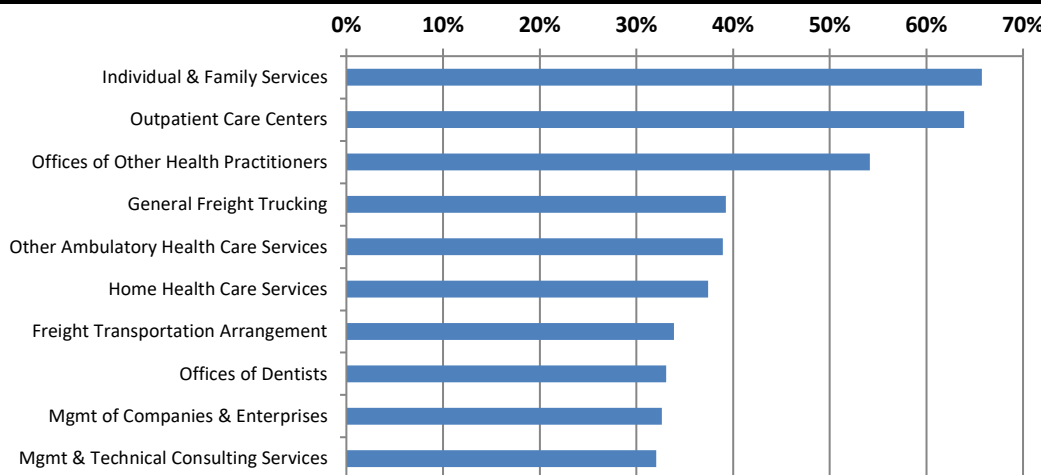
| US Labor Force Statistics | | | | |
|---------------------------|-------------|-------------|-------------|-----------|
| | Oct-18 | Sep-18 | Oct-17 | OTY |
| CLF | 162,723,000 | 161,958,000 | 160,465,000 | 2,258,000 |
| Employed | 156,952,000 | 156,191,000 | 154,223,000 | 2,729,000 |
| Unemployed | 5,771,000 | 5,766,000 | 6,242,000 | -471,000 |
| Rate | 3.5% | 3.6% | 3.9% | -0.4% |

| Continued Claims for the Week of the 12th | | | | |
|---|--------|--------|---------|---------|
| | Oct-18 | Sep-18 | Oct-17 | OTY |
| WDA | 2,216 | 2,405 | 2,848 | -632 |
| Texas | 79,605 | 85,803 | 105,966 | -26,361 |

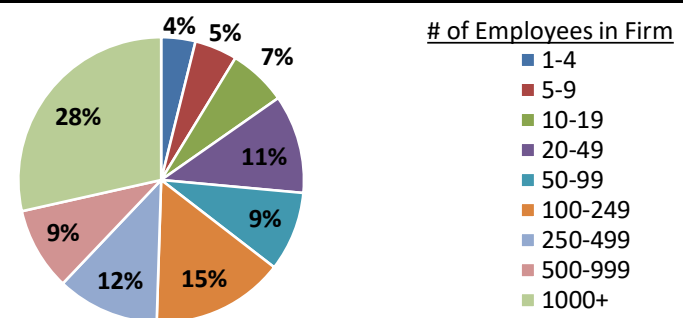
Historical Unemployment Rates



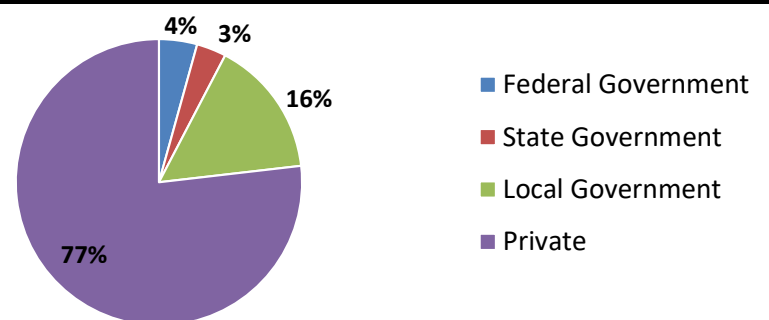
Projected Fastest Growing Industries in WDA (% growth 2014-2024)



Employment by Size Class (1st Quarter 2018)



Employment by Ownership (1st Quarter 2018)



Average Weekly Wage (1st Quarter 2018)

| | Q1 2018 | Q4 2017 | Q1 2017 | Change | |
|-------|---------|---------|---------|---------|------|
| | | | | Quarter | Year |
| WDA | \$746 | \$751 | \$732 | -\$5 | \$14 |
| Texas | \$1,167 | \$1,109 | \$1,124 | \$58 | \$42 |
| US | \$1,152 | \$1,109 | \$1,111 | \$43 | \$41 |

Employment by Industry (1st Quarter 2018, Percent Change)

| Industry | Employment | % of total | % Change | |
|-------------------------------------|----------------|---------------|--------------|-------------|
| | | | Quarter | Year |
| Natural resources and mining | 1,853 | 0.6% | 5.7% | 2.2% |
| Construction | 16,132 | 5.2% | -0.3% | 2.5% |
| Manufacturing | 16,604 | 5.3% | -1.2% | -2.9% |
| Trade, transportation and utilities | 69,851 | 22.3% | -2.3% | 0.1% |
| Information | 4,561 | 1.5% | -12.1% | -11.1% |
| Financial activities | 12,628 | 4.0% | -1.5% | -0.1% |
| Professional and business services | 35,341 | 11.3% | 3.9% | 6.3% |
| Education and health services | 92,047 | 29.4% | -0.3% | 1.6% |
| Leisure and hospitality | 39,011 | 12.5% | 2.0% | 3.7% |
| Other services | 7,065 | 2.3% | 0.5% | 0.1% |
| Public administration | 17,884 | 5.7% | 0.8% | 1.2% |
| Total | 312,977 | 100.0% | -0.2% | 1.5% |

Employment by Industry (1st Quarter 2018)

