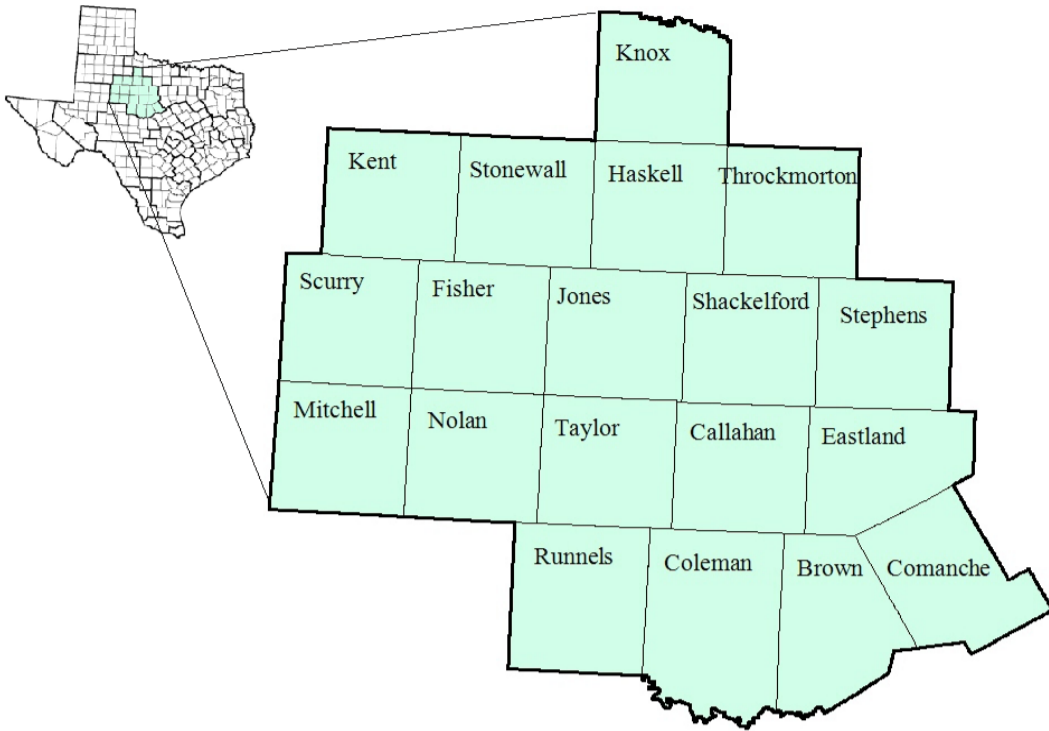


West Central Texas Workforce Development Area

October 2018



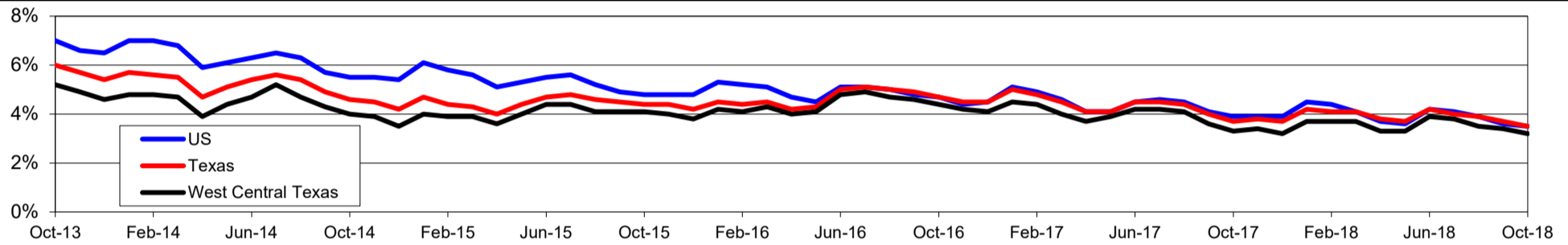
WDA Labor Force Statistics				
	Oct-18	Sep-18	Oct-17	OTY
CLF	142,833	142,799	141,414	1,419
Employed	138,320	137,959	136,723	1,597
Unemployed	4,513	4,840	4,691	-178
Rate	3.2%	3.4%	3.3%	-0.1%

Texas Labor Force Statistics				
	Oct-18	Sep-18	Oct-17	OTY
CLF	13,869,529	13,802,138	13,536,215	333,314
Employed	13,390,620	13,285,102	13,034,581	356,039
Unemployed	478,909	517,036	501,634	-22,725
Rate	3.5%	3.7%	3.7%	-0.2%

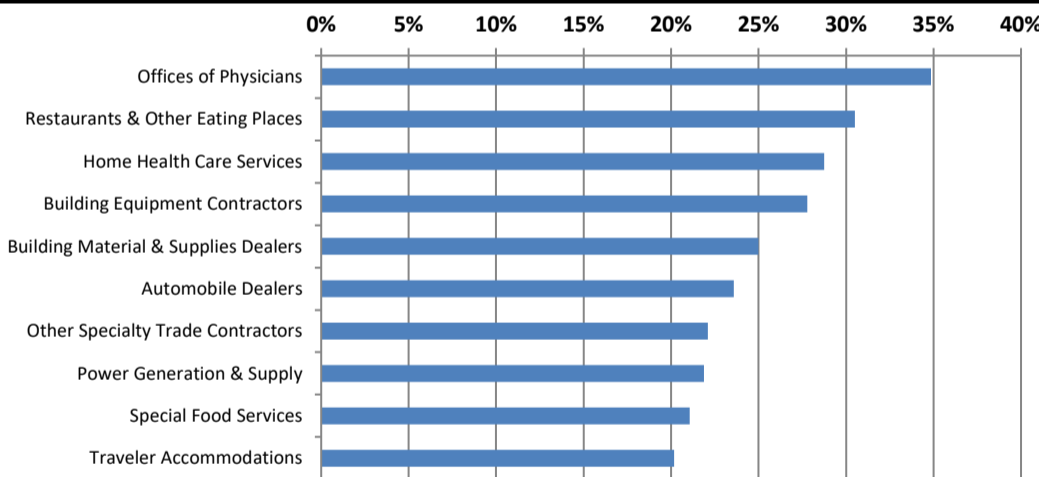
US Labor Force Statistics				
	Oct-18	Sep-18	Oct-17	OTY
CLF	162,723,000	161,958,000	160,465,000	2,258,000
Employed	156,952,000	156,191,000	154,223,000	2,729,000
Unemployed	5,771,000	5,766,000	6,242,000	-471,000
Rate	3.5%	3.6%	3.9%	-0.4%

Continued Claims for the Week of the 12th				
	Oct-18	Sep-18	Oct-17	OTY
WDA	468	491	660	-192
Texas	79,605	85,803	105,966	-26,361

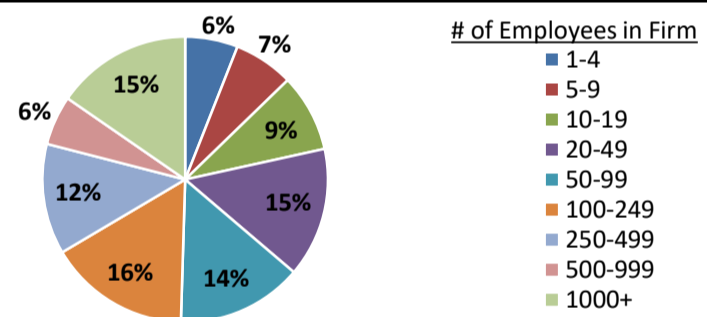
Historical Unemployment Rates



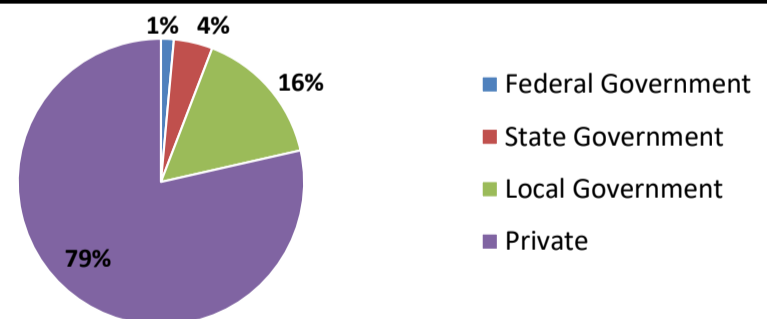
Projected Fastest Growing Industries in WDA (% growth 2014-2024)



Employment by Size Class (1st Quarter 2018)



Employment by Ownership (1st Quarter 2018)



Average Weekly Wage (1st Quarter 2018)

	Q1 2018	Q4 2017	Q1 2017	Change	
				Quarter	Year
WDA	\$802	\$810	\$753	-\$8	\$50
Texas	\$1,167	\$1,109	\$1,124	\$58	\$42
US	\$1,152	\$1,109	\$1,111	\$43	\$41

Employment by Industry (1st Quarter 2018, Percent Change)

Industry	Employment	% of total	% Change	
			Quarter	Year
Natural resources and mining	7,444	6.0%	1.1%	4.4%
Construction	6,578	5.3%	2.4%	4.3%
Manufacturing	9,405	7.6%	0.7%	6.1%
Trade, transportation and utilities	24,880	20.2%	-1.0%	1.6%
Information	1,458	1.2%	10.7%	7.8%
Financial activities	5,890	4.8%	-0.5%	3.3%
Professional and business services	7,793	6.3%	-0.6%	3.9%
Education and health services	35,976	29.2%	-0.2%	0.5%
Leisure and hospitality	12,579	10.2%	-1.2%	-0.7%
Other services	3,398	2.8%	-3.7%	-3.4%
Public administration	7,675	6.2%	-0.3%	-3.5%
Total	123,076	100.0%	-0.2%	1.5%

Employment by Industry (1st Quarter 2018)

