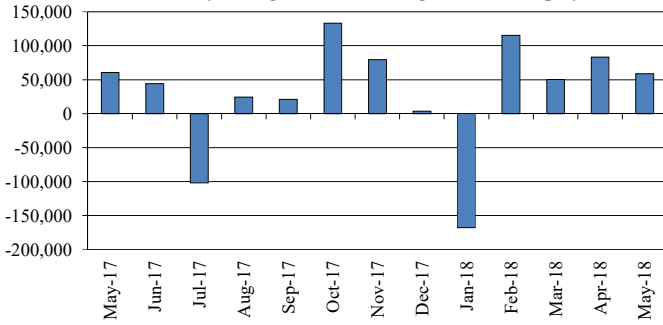
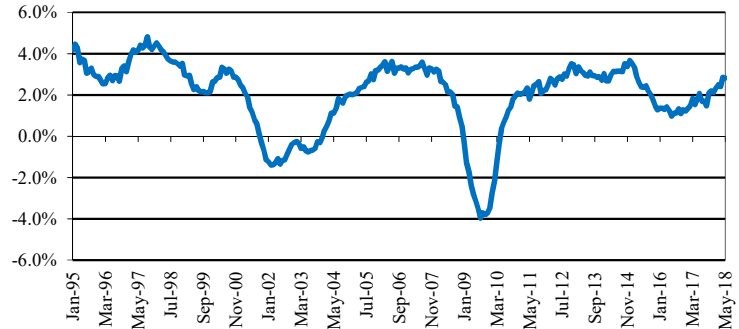


Nonagricultural Employment

Monthly Changes in Total Nonagricultural Employment



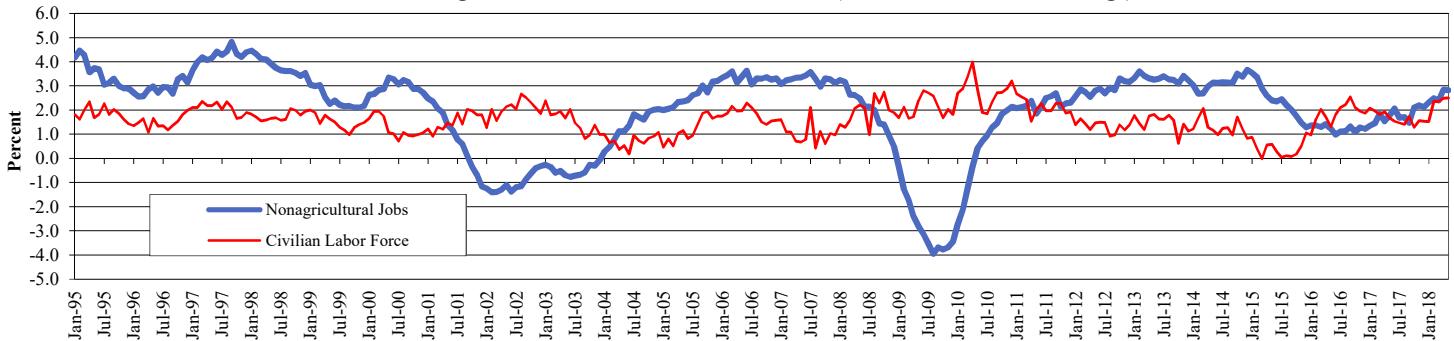
Annual Growth Rate for Total Nonagricultural Employment



Employment by Industry	May-18	Apr-18	May-17	Monthly		Annual	
				Change	%	Change	%
Total Nonagricultural	12,576,100	12,517,100	12,231,400	59,000	0.5%	344,700	2.8%
Mining & Logging	249,100	244,800	220,100	4,300	1.8%	29,000	13.2%
Construction	753,300	746,800	713,600	6,500	0.9%	39,700	5.6%
Manufacturing	874,300	872,900	846,500	1,400	0.2%	27,800	3.3%
Trade, Transportation, & Utilities	2,492,700	2,490,900	2,431,200	1,800	0.1%	61,500	2.5%
Information	198,300	197,700	202,200	600	0.3%	-3,900	-1.9%
Financial Activities	771,100	765,700	751,100	5,400	0.7%	20,000	2.7%
Professional & Business Services	1,736,200	1,734,000	1,654,600	2,200	0.1%	81,600	4.9%
Education & Health Services	1,704,600	1,695,000	1,670,700	9,600	0.6%	33,900	2.0%
Leisure & Hospitality	1,384,100	1,363,300	1,338,800	20,800	1.5%	45,300	3.4%
Other Services	438,300	436,100	431,500	2,200	0.5%	6,800	1.6%
Government	1,974,100	1,969,900	1,971,100	4,200	0.2%	3,000	0.2%

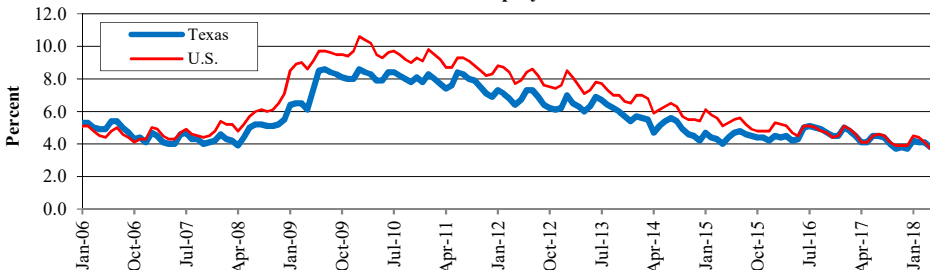
Nonagricultural Summary
 Texas Total Nonagricultural employment reported monthly growth of 59,000 jobs from April to May. All major industries showed gains. Leisure & Hospitality posted an increase of 20,800 jobs. Education & Health Services added 9,600 jobs, while Construction reported a solid increase of 6,500 jobs. Mining & Logging reported the highest monthly industry growth rate of 1.8 percent. Total Nonfarm employment grew by 344,700 jobs over the year, a 2.8 percent annual growth rate. Professional & Business Services gained 81,600 annual jobs. Trade, Transportation & Utilities grew by 61,500 positions since May 2017. Mining & Logging reported the highest annual industry job growth rate of 13.2 percent. Information was the only industry reporting an annual decline of 3,900 positions.

Texas Total Nonagricultural Jobs vs. Civilian Labor Force (Over-the-Year Percent Change)



Civilian Labor Force and Unemployment Statistics

Texas and U.S. Unemployment Rates



Texas Civilian Labor Force				
Mo/Yr	Labor Force	Employment	Unemploy.	Rate
May-17	13,498,700	12,940,800	557,900	4.1
Dec-17	13,598,100	13,096,200	501,800	3.7
Jan-18	13,621,800	13,053,800	568,000	4.2
Feb-18	13,811,900	13,241,900	570,000	4.1
Mar-18	13,836,500	13,267,100	569,400	4.1
Apr-18	13,863,100	13,342,500	520,600	3.8
May-18	13,836,500	13,321,200	515,200	3.7

Labor Force Summary

The Texas not-seasonally adjusted unemployment rate dropped from 3.8 percent in April to 3.7 percent in May, after a three-tenths of a percentage point drop in April. The May change was below the typical unemployment rate increase which averaged three-tenths of a percentage point from April to May over the previous 10 years. Two of the last ten years were unchanged, but the rest of April-to-May years had unemployment rates that increased. The Texas over-the-year unemployment rate dropped four-tenths of a percentage point since May 2017.

The U.S. not seasonally adjusted unemployment rate reported a drop of one-tenth of a percentage point from 3.7 percent in April to 3.6 percent in May. The United States unemployment rate moved down five-tenths of a percentage point from 4.1 percent in May 2017.

United States Civilian Labor Force				
Mo/Yr	Labor Force	Employment	Unemploy.	Rate
May-17	159,979,000	153,407,000	6,572,000	4.1
Dec-17	159,880,000	153,602,000	6,278,000	3.9
Jan-18	160,037,000	152,848,000	7,189,000	4.5
Feb-18	161,494,000	154,403,000	7,091,000	4.4
Mar-18	161,548,000	154,877,000	6,671,000	4.1
Apr-18	161,280,000	155,348,000	5,932,000	3.7
May-18	161,765,000	156,009,000	5,756,000	3.6