

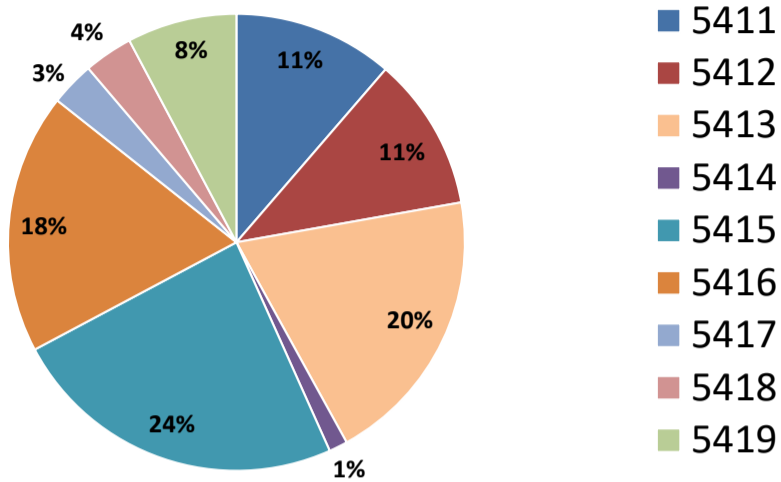
# TEXAS INDUSTRY PROFILE

## NAICS Sector 54 - Professional, Scientific, and Technical Services Second Quarter 2018

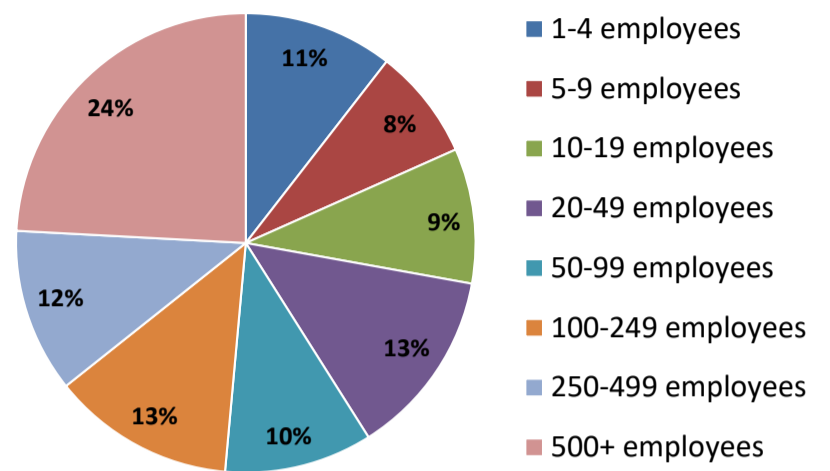
This sector comprises establishments that specialize in performing services that require a high degree of expertise and training for clients in a variety of industries.

**Components:** Legal Services-NAICS 5411, Accounting, Tax Preparation, Bookkeeping, & Payroll Services-NAICS 5412, Architectural, Engineering, & Related Services-NAICS 5413, Specialized Design Services-NAICS 5414, Computer Systems Design & Related Services-NAICS 5415, Management, Scientific, & Technical Consulting Services-NAICS 5416, Scientific Research & Development Services-NAICS 5417, Advertising & Related Services-NAICS 5418, and Other Professional, Scientific, & Technical Services-NAICS 5419.

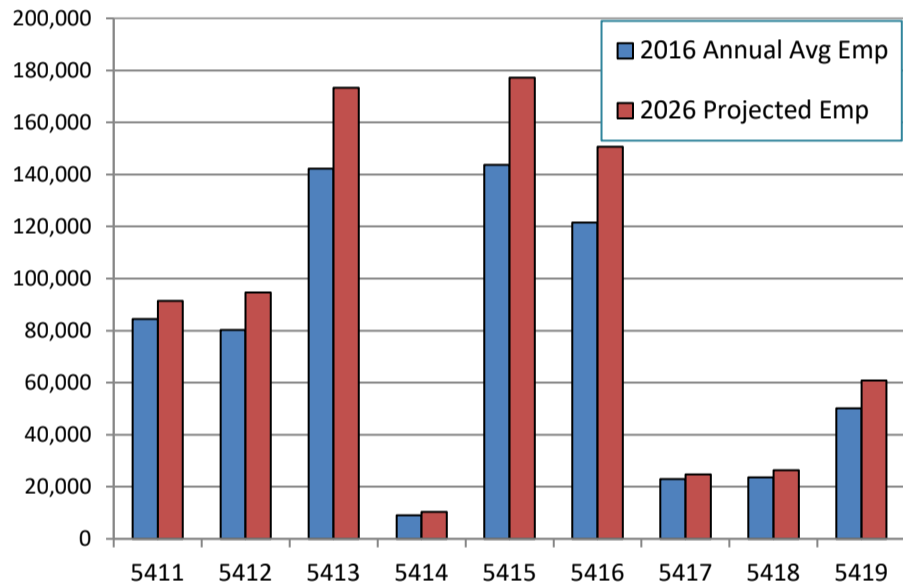
Industry Groups by Employment (Emp: 738,349)



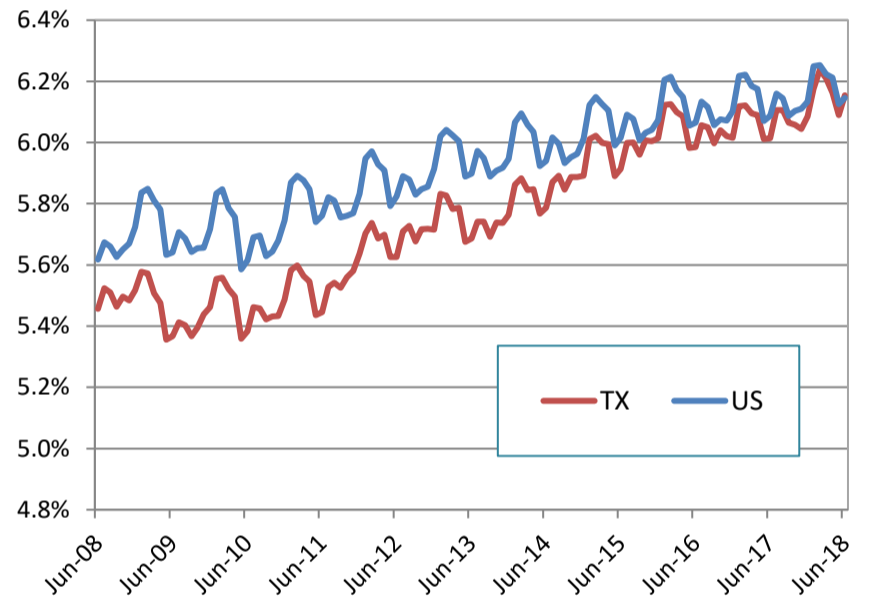
Size Classes by Employment



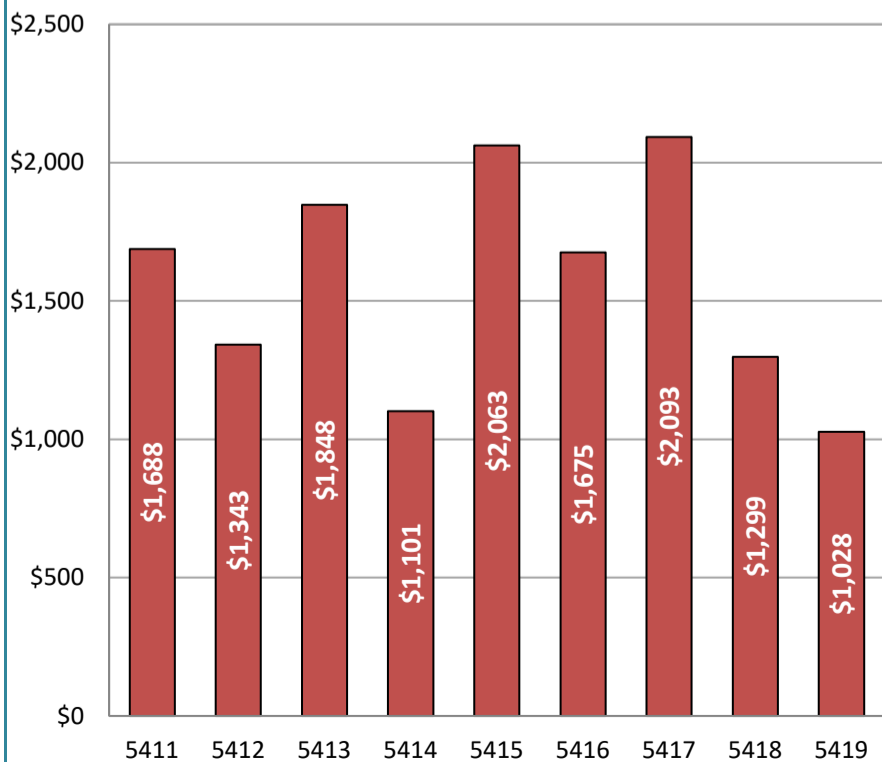
Projected Industry Employment



Industry Employment as a Percentage of Total Nonfarm Employment (Private Ownership Only)



Average Weekly Wage



Industry Employment as a Percentage of County Employment

